

Combined Higher Secondary Level Examination 2023 Tier I

Roll Number	
Candidate Name	
Venue Name	
Exam Date	07/08/2023
Exam Time	11:45 AM - 12:45 PM
Subject	CHSL Exam 2023 Tier I

Section : English Language

Q.1 Select the most appropriate synonym of the given word.
Challenge

- Ans ☒ 1. Dare
☐ 2. Chagrin
☐ 3. Exert
☐ 4. Acceptance

Question ID : 264330143643
Status : Answered
Chosen Option : 1

Q.2 Select the most appropriate ANTONYM of the given word.
Hamper

- Ans ☐ 1. Obscure
☐ 2. Reduce
☐ 3. Hinder
☒ 4. Promote

Question ID : 264330147536
Status : Answered
Chosen Option : 4

Q.3 Select the option that will improve the underlined part of the given sentence.
Robinhood broke within the mansion to collect some food and money for the poor.

- Ans ☐ 1. broke upto
☐ 2. broke in
☒ 3. broke into
☐ 4. broke to

Question ID : 264330149915
Status : Answered
Chosen Option : 2

Test Prime

**ALL EXAMS,
ONE SUBSCRIPTION**



70,000+
Mock Tests



**Personalised
Report Card**



**Unlimited
Re-Attempt**



600+
Exam Covered



**Previous Year
Papers**



500%
Refund



ATTEMPT FREE MOCK NOW

Q.4 Select the option that can be used as a one-word substitute for the given group of words.

The study of skin

- Ans** ☒ 1. Dermatology
☒ 2. Cytology
☒ 3. Congenital
☒ 4. Dementia

Question ID : 264330144103
 Status : Answered
 Chosen Option : 1

Q.5 Select the most appropriate option that can substitute the underlined words in the given sentence.

I was so nervous for the job interview that I was sweating bullets the whole time.

- Ans** ☒ 1. very happy
☒ 2. extremely nervous or anxious
☒ 3. very cold
☒ 4. very hard

Question ID : 264330144164
 Status : Answered
 Chosen Option : 2

Q.6 The following sentence has been split into four segments. Identify the segment that contains a spelling error.
 It is difficult to / retain anonimity while / working in the world's / most well-known organisation.

- Ans** ☒ 1. working in the world's
☒ 2. It is difficult to
☒ 3. most well-known organisation.
☒ 4. retain anonimity while

Question ID : 264330144291
 Status : Answered
 Chosen Option : 4

Q.7 Parts of a sentence are given below in jumbled order. Arrange the parts in the correct order to form a meaningful sentence.

- A. human life consists of a succession of small events each of which is
 B. and yet the happiness and success of every man depends
 C. comparatively unimportant
 D. upon the manner in which these small events are dealt with

- Ans** ☒ 1. ACBD
☒ 2. ABDC
☒ 3. ABCD
☒ 4. ADCB

Question ID : 264330147574
 Status : Answered
 Chosen Option : 2

Q.8 Select the most appropriate option that can substitute the underlined segment in the given sentence.

Our teachers has planned of going for a picnic to the Doon Valley.

- Ans**
- ☒ 1. Our teachers has planned a picnic
 - ☒ 2. Our teachers has plan a picnic
 - ☒ 3. Our teachers is planned a picnic
 - ☒ 4. Our teachers have planned a picnic

Question ID : 264330149859

Status : Answered

Chosen Option : 4

Q.9 Select the option that expresses the given sentence in passive voice.
Austin kept the cake in the refrigerator.

- Ans**
- ☒ 1. The cake is kept in the refrigerator by Austin.
 - ☒ 2. The cake was kept in the refrigerator by Austin.
 - ☒ 3. The cake was being kept by Austin in the refrigerator.
 - ☒ 4. The cake was kept in the Austin by the refrigerator.

Question ID : 264330147607

Status : Answered

Chosen Option : 2

Q.10 Select the option that will improve the underlined part of the following sentence.
The new employee was quickly promoted due to their hard work and dedication.

- Ans**
- ☒ 1. due to his hard work and dedication
 - ☒ 2. due to the hard work and dedication of him
 - ☒ 3. due to hard work and dedication
 - ☒ 4. due to giving hard work and showing dedication

Question ID : 264330143931

Status : Answered

Chosen Option : 1

Q.11 Sentences of a paragraph are given below in jumbled order. Select the option that arranges the sentences in the correct order to form a meaningful and coherent paragraph.

- A.The nation has flourished a lot in many areas during last seven decades.
- B.The truth is perhaps partial neglect and insignificant place given in the budgetary allocations by the ruling governments
- C.But the biggest ever challenges of healthcare and education are still not achieved in their true sense.
- D.Specific reasons are partially known and the rest is speculation about it.

- Ans**
- ☒ 1. A, C, B, D
 - ☒ 2. D, A, B, C
 - ☒ 3. A, C, D, B
 - ☒ 4. D, A, C, B

Question ID : 264330148745

Status : Answered

Chosen Option : 1

Q.12 Select the most appropriate **ANTONYM** of the underlined word.
Measures adopted by the International Olympic Committee (IOC) and supported by the UN have been described as a 'game changer' for future Olympic events in terms of driving sustainability in sport and fighting climate change.

- Ans** ☒ 1. rejected
☐ 2. headed
☐ 3. established
☐ 4. inducted

Question ID : 264330143658
Status : Answered
Chosen Option : 1

Q.13 Select the meaningful and correctly spelt word from the given options to fill in the blank.

The most _____ creature, as far as Amit is concerned, is a walrus.

- Ans** ☐ 1. dyspecable
☒ 2. despicable
☐ 3. deliberate
☐ 4. desietful

Question ID : 264330148935
Status : Answered
Chosen Option : 1

Q.14 The following sentence has been split into four segments. Identify the segment that contains a grammatical error.
I am / walking in the / Cross Road Garden / since morning.

- Ans** ☐ 1. Cross Road Garden
☐ 2. since morning
☐ 3. walking in the
☒ 4. I am

Question ID : 264330149474
Status : Answered
Chosen Option : 4

Q.15 Select the option that expresses the given sentence in positive degree of comparison.

He was greater than any other physiologist of the century.

- Ans** ☐ 1. All other physiologists were as great as him.
☐ 2. He was the greatest physiologist of all.
☐ 3. He as a physiologist in the country was among the greatest people.
☒ 4. No other physiologist of the century was as great as he was.

Question ID : 264330143881
Status : Answered
Chosen Option : 4

Q.16 Select the most appropriate synonym of the underlined word in the given sentence.

Specify the issue of feminism in your own words.

- Ans ☒ 1. brief
☒ 2. refute
☒ 3. criticise
☒ 4. define

Question ID : 264330144245
Status : Answered
Chosen Option : 1

Q.17 Select the most appropriate meaning of the given idiom.

Forty winks

- Ans ☒ 1. A small talk
☒ 2. A precarious situation
☒ 3. A short nap
☒ 4. An opportunity in hand

Question ID : 264330142636
Status : Answered
Chosen Option : 3

Q.18 Select the most appropriate ANTONYM of the given word.
Inept

- Ans ☒ 1. Adorable
☒ 2. Kind
☒ 3. Skilful
☒ 4. Elegant

Question ID : 264330143247
Status : Answered
Chosen Option : 3

Q.19 Select the option that expresses the given sentence in passive voice.

The peon will post the letter.

- Ans ☒ 1. The letter has been posted by the peon.
☒ 2. The letter would have been posted by the peon.
☒ 3. The letter will be posted by the peon.
☒ 4. The letter is being posted by the peon.

Question ID : 264330141348
Status : Answered
Chosen Option : 3

Q.20 Select the most appropriate **ANTONYM** of the word given in brackets to fill in the blank.

The smell of _____ (formerly) brewed coffee wafted through the air, beckoning him to start his day.

- Ans**
- ☒ 1. hitherto
 - ☒ 2. quickly
 - ☒ 3. preserved
 - ☒ 4. subsequently

Question ID : 264330147540

Status : Answered

Chosen Option : 1

Comprehension:

In the following passage, some words have been deleted. Read the passage carefully and select the most appropriate option to fill in each blank.

Seasonal winds are a natural phenomenon that (1)_____ weather patterns across the globe. These winds are caused by the sun's unequal heating of the earth's surface, which creates differences in temperature and pressure between different regions. The movement of air from high-pressure areas to low-pressure areas causes seasonal winds to form, and their direction and intensity (2)_____ depending on the region and season. One of the most significant seasonal winds is the monsoon, which affects large parts of South Asia during the summer months. This wind system brings much-needed rain to the region, but it can also cause flooding and landslides, leading to loss of life and property damage. Other seasonal winds include the harmattan in West Africa, which is a dry, dusty wind that blows from the Sahara Desert towards the Atlantic coast, and the mistral in southern France, which is a strong, cold wind that blows down the Rhone Valley towards the Mediterranean. Seasonal winds can have a significant (3)_____ on agriculture, particularly in regions where rainfall is limited. Farmers rely on the monsoon or other seasonal winds in these areas to bring moisture to their crops. However, changes in wind patterns due to climate change can (4)_____ these seasonal rains, leading to crop failures and food shortages. Overall, seasonal winds are a vital part of the earth's weather system, and their effects are (5)_____ across the globe.

SubQuestion No : 21

Q.21 Select the most appropriate option to fill in blank 1.

- Ans**
- ☒ 1. affects
 - ☒ 2. calculates
 - ☒ 3. collides
 - ☒ 4. exaggerates

Question ID : 264330149786

Status : Answered

Chosen Option : 1

Comprehension:

In the following passage, some words have been deleted. Read the passage carefully and select the most appropriate option to fill in each blank.

Seasonal winds are a natural phenomenon that (1)_____ weather patterns across the globe. These winds are caused by the sun's unequal heating of the earth's surface, which creates differences in temperature and pressure between different regions. The movement of air from high-pressure areas to low-pressure areas causes seasonal winds to form, and their direction and intensity (2)_____ depending on the region and season. One of the most significant seasonal winds is the monsoon, which affects large parts of South Asia during the summer months. This wind system brings much-needed rain to the region, but it can also cause flooding and landslides, leading to loss of life and property damage. Other seasonal winds include the harmattan in West Africa, which is a dry, dusty wind that blows from the Sahara Desert towards the Atlantic coast, and the mistral in southern France, which is a strong, cold wind that blows down the Rhone Valley towards the Mediterranean. Seasonal winds can have a significant (3)_____ on agriculture, particularly in regions where rainfall is limited. Farmers rely on the monsoon or other seasonal winds in these areas to bring moisture to their crops. However, changes in wind patterns due to climate change can (4)_____ these seasonal rains, leading to crop failures and food shortages. Overall, seasonal winds are a vital part of the earth's weather system, and their effects are (5)_____ across the globe.

SubQuestion No : 22

Q.22 Select the most appropriate option to fill in blank 2.

- Ans ☒ 1. fluctuate
☒ 2. transform
☒ 3. mutate
☒ 4. vary

Question ID : 264330149787

Status : Answered

Chosen Option : 4

Comprehension:

In the following passage, some words have been deleted. Read the passage carefully and select the most appropriate option to fill in each blank.

Seasonal winds are a natural phenomenon that (1)_____ weather patterns across the globe. These winds are caused by the sun's unequal heating of the earth's surface, which creates differences in temperature and pressure between different regions. The movement of air from high-pressure areas to low-pressure areas causes seasonal winds to form, and their direction and intensity (2)_____ depending on the region and season. One of the most significant seasonal winds is the monsoon, which affects large parts of South Asia during the summer months. This wind system brings much-needed rain to the region, but it can also cause flooding and landslides, leading to loss of life and property damage. Other seasonal winds include the harmattan in West Africa, which is a dry, dusty wind that blows from the Sahara Desert towards the Atlantic coast, and the mistral in southern France, which is a strong, cold wind that blows down the Rhone Valley towards the Mediterranean. Seasonal winds can have a significant (3)_____ on agriculture, particularly in regions where rainfall is limited. Farmers rely on the monsoon or other seasonal winds in these areas to bring moisture to their crops. However, changes in wind patterns due to climate change can (4)_____ these seasonal rains, leading to crop failures and food shortages. Overall, seasonal winds are a vital part of the earth's weather system, and their effects are (5)_____ across the globe.

SubQuestion No : 23

Q.23 Select the most appropriate option to fill in blank 3.

- Ans ☒ 1. opportunity
☒ 2. blame
☒ 3. outcome
☒ 4. impact

Question ID : 264330149788

Status : Answered

Chosen Option : 4

Comprehension:

In the following passage, some words have been deleted. Read the passage carefully and select the most appropriate option to fill in each blank.

Seasonal winds are a natural phenomenon that (1)_____ weather patterns across the globe. These winds are caused by the sun's unequal heating of the earth's surface, which creates differences in temperature and pressure between different regions. The movement of air from high-pressure areas to low-pressure areas causes seasonal winds to form, and their direction and intensity (2)_____ depending on the region and season. One of the most significant seasonal winds is the monsoon, which affects large parts of South Asia during the summer months. This wind system brings much-needed rain to the region, but it can also cause flooding and landslides, leading to loss of life and property damage. Other seasonal winds include the harmattan in West Africa, which is a dry, dusty wind that blows from the Sahara Desert towards the Atlantic coast, and the mistral in southern France, which is a strong, cold wind that blows down the Rhone Valley towards the Mediterranean. Seasonal winds can have a significant (3)_____ on agriculture, particularly in regions where rainfall is limited. Farmers rely on the monsoon or other seasonal winds in these areas to bring moisture to their crops. However, changes in wind patterns due to climate change can (4)_____ these seasonal rains, leading to crop failures and food shortages. Overall, seasonal winds are a vital part of the earth's weather system, and their effects are (5)_____ across the globe.

SubQuestion No : 24

Q.24 Select the most appropriate option to fill in blank 4.

- Ans
- ☒ 1. align
 - ☒ 2. corrupt
 - ☒ 3. neglect
 - ☒ 4. disrupt

Question ID : 264330149789

Status : Answered

Chosen Option : 4

Comprehension:

In the following passage, some words have been deleted. Read the passage carefully and select the most appropriate option to fill in each blank.

Seasonal winds are a natural phenomenon that (1)_____ weather patterns across the globe. These winds are caused by the sun's unequal heating of the earth's surface, which creates differences in temperature and pressure between different regions. The movement of air from high-pressure areas to low-pressure areas causes seasonal winds to form, and their direction and intensity (2)_____ depending on the region and season. One of the most significant seasonal winds is the monsoon, which affects large parts of South Asia during the summer months. This wind system brings much-needed rain to the region, but it can also cause flooding and landslides, leading to loss of life and property damage. Other seasonal winds include the harmattan in West Africa, which is a dry, dusty wind that blows from the Sahara Desert towards the Atlantic coast, and the mistral in southern France, which is a strong, cold wind that blows down the Rhone Valley towards the Mediterranean. Seasonal winds can have a significant (3)_____ on agriculture, particularly in regions where rainfall is limited. Farmers rely on the monsoon or other seasonal winds in these areas to bring moisture to their crops. However, changes in wind patterns due to climate change can (4)_____ these seasonal rains, leading to crop failures and food shortages. Overall, seasonal winds are a vital part of the earth's weather system, and their effects are (5)_____ across the globe.

SubQuestion No : 25

Q.25 Select the most appropriate option to fill in blank 5.

- Ans
- ☒ 1. overlooked
 - ☒ 2. furnished
 - ☒ 3. assumed
 - ☒ 4. felt

Question ID : 264330149790

Status : Answered

Chosen Option : 4

Section : General Intelligence

Q.1 Which of the following numbers will replace the question mark (?) in the given series?

233, 237, 245, 257, 273, ?

Ans ✓ 1. 293

✗ 2. 303

✗ 3. 290

✗ 4. 305

Question ID : 264330147268

Status : Answered

Chosen Option : 1

Q.2 Read the given statements and conclusions carefully. Assuming that the information given in the statements is true, even if it appears to be at variance with commonly known facts, decide which of the given conclusions logically follow(s) from the statements.

Statements:

Some tickets are clocks.

All buttons are tickets.

No stamps are clocks.

Conclusions:

(I) No tickets are stamps.

(II) Some buttons are clocks.

Ans ✗ 1. Both conclusions (I) and (II) follow

✗ 2. Only conclusion (II) follows

✓ 3. Neither conclusion (I) nor (II) follows

✗ 4. Only conclusion (I) follows

Question ID : 264330146590

Status : Answered

Chosen Option : 3

Q.3 Which of the following letter-clusters will replace the question mark (?) in the given series to make it logically complete?

HP 16, 7, NV 64, QY 100, TB 144

Ans ✗ 1. JS 36

✗ 2. JR 36

✗ 3. KR 49

✓ 4. KS 36

Question ID : 264330147255

Status : Answered

Chosen Option : 2

Q.4 What should come in place of ? in the given series?

40 39 37 34 30 ?

- Ans
- ☒ 1. 24
 - ☒ 2. 25
 - ☒ 3. 27
 - ☒ 4. 21

Question ID : 264330152032
Status : Answered
Chosen Option : 2

Q.5 What will come in the place of the question mark (?) in the following equation if '+' and '-' are interchanged and 'x' and '÷' are interchanged?

$$35 - 28 \div 7 + 322 \times 23 = ?$$

- Ans
- ☒ 1. 217
 - ☒ 2. 233
 - ☒ 3. 209
 - ☒ 4. 221

Question ID : 264330146407
Status : Answered
Chosen Option : 1

Q.6 Four number-pairs have been given, out of which three are alike in some manner and one is different. Select the one that is different.

(NOTE: Operations should be performed on the whole numbers, without breaking down the numbers into its constituent digits. E.g. 13 – Operations on 13 such as adding / subtracting / multiplying etc. to 13 can be performed. Breaking down 13 into 1 and 3 and then performing mathematical operations on 1 and 3 is not allowed.)

15 : 126

27 : 234

31 : 270

17 : 162

- Ans
- ☒ 1. 17 : 162
 - ☒ 2. 15 : 126
 - ☒ 3. 27 : 234
 - ☒ 4. 31 : 270

Question ID : 264330147022
Status : Answered
Chosen Option : 2

Q.7 Three of the following four are alike in a certain way and thus form a group. Which is the one that does NOT belong to that group?

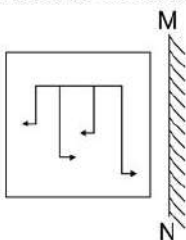
- Ans**
- ☒ 1. BDG
 - ☒ 2. MOR
 - ☒ 3. PRU
 - ☒ 4. GJM

Question ID : 264330151973

Status : Answered

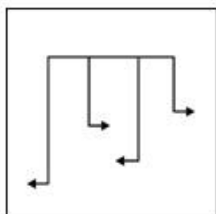
Chosen Option : 4

Q.8 Select the correct mirror image of the given figure when the mirror is placed at MN as shown.

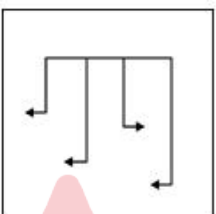


Ans

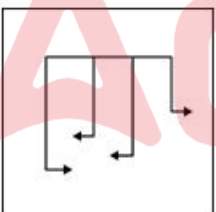
☒ 1.



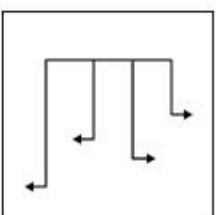
☒ 2.



☒ 3.



☒ 4.



Question ID : 264330146471

Status : Answered

Chosen Option : 1

Q.9 What will come in place of the question mark (?) in the following equation if '+' and '-' are interchanged and '×' and '÷' are interchanged?

$$8 + 512 \times 64 + 33 - 95 = ?$$

- Ans**
- ☒ 1. 116
 - ☒ 2. 75
 - ☒ 3. 216
 - ☒ 4. 126

Question ID : 264330146350
Status : Answered
Chosen Option : 4

Q.10 NQSP is related to TWYV in a certain way based on the English alphabetical order. In the same way, EHJG is related to KNPM. To which of the following is LOQN related to, following the same logic?

- Ans**
- ☒ 1. RUVT
 - ☒ 2. RUWT
 - ☒ 3. RWXT
 - ☒ 4. RVWT

Question ID : 264330147313
Status : Answered
Chosen Option : 2

Q.11 Select the term from among the given options that can replace the question mark (?) in the following series based on the English alphabetical order.

CYF, IHL, ?, UZO, AIR

- Ans**
- ☒ 1. OQL
 - ☒ 2. UQM
 - ☒ 3. UQL
 - ☒ 4. OQM

Question ID : 264330146934
Status : Answered
Chosen Option : 1

Q.12 The position of how many letters will remain unchanged if each of the letters in the word BACKING is arranged in alphabetical order?

- Ans**
- ☒ 1. Two
 - ☒ 2. One
 - ☒ 3. Three
 - ☒ 4. None

Question ID : 264330146875
Status : Answered
Chosen Option : 1

Q.13 23 is related to 74 following a certain logic. Following the same logic, 13 is related to 44. To which of the following is 18 related to, following the same logic?

- Ans**
- ☒ 1. 75
 - ☒ 2. 67
 - ☒ 3. 59
 - ☒ 4. 64

Question ID : 264330147356

Status : Answered

Chosen Option : 3

Q.14 Identify the figure given in the options which when put in place of the question mark (?) will logically complete the series.

○ ○ ○ □ □ △	□ □ □ △ △ %	△ △ △ % % +	% % % + + =	?
-------------------	-------------------	-------------------	-------------------	---

Ans

☒ 1.

+	+	+
=	=	
		*

☒ 2.

+	+	+
=	=	
		%

☒ 3.

+	+	+
*	*	
		=

☒ 4.

+	+	+
=	=	=
		*

Question ID : 264330147235

Status : Answered

Chosen Option : 1

Q.15 Select the number pair in which the numbers are related in the same way as are the numbers of the given number pairs.

(NOTE: Operations should be performed on the whole numbers, without breaking down the numbers into their constituent digits. E.g., 13—Operations on 13 such as adding/deleting/multiplying etc. to 13 can be performed. Breaking down 13 into 1 and 3 and then performing mathematical operations on 1 and 3 is not allowed.)

6 : 31

8 : 59

- Ans**
- ☒ 1. 7 : 42
 - ☒ 2. 9 : 75
 - ☒ 3. 25 : 620
 - ☒ 4. 12 : 140

Question ID : 264330151018

Status : Answered

Chosen Option : 3

Q.16 Q is the brother of L. L is the sister of N. N is the father of R. R is married to P. P is the brother of T. T is the mother of X. Y is the daughter of R. How is Y related to T?

- Ans**
- ☒ 1. Daughter's daughter
 - ☒ 2. Brother's daughter
 - ☒ 3. Daughter
 - ☒ 4. Sister's daughter

Question ID : 264330146099

Status : Answered

Chosen Option : 2

Q.17 What should come in place of ? in the given series based on the English alphabetical order?

FNL CRI ZVF WZC ?

- Ans**
- ☒ 1. REA
 - ☒ 2. TDZ
 - ☒ 3. QEZ
 - ☒ 4. SDA

Question ID : 264330146616

Status : Answered

Chosen Option : 2

Q.18 Read the given statements and conclusions carefully. Assuming that the information given in the statements is true, even if it appears to be at variance with commonly known facts, decide which of the given conclusions logically follow(s) from the statements.

Statements:

All rocks are mountains.
All stones are pebbles.
Some pebbles are mountains.

Conclusions:

(I) Some rocks are stones.
(II) No pebbles are rocks.

- Ans**
- ☒ 1. Only conclusion (I) follows
 - ☒ 2. Neither conclusion (I) nor (II) follows
 - ☒ 3. Both conclusions (I) and (II) follow
 - ☒ 4. Only conclusion (II) follows

Question ID : 264330146596

Status : Answered

Chosen Option : 2

Q.19 In a certain code language, 'HALLUCINATED' is written as 'IZMKVBJMBSFC' and 'PURIFICATION' is written as 'QTSHGHDZUHPM'. How is 'ABBREVIATION' written in the given language?

- Ans**
- ☒ 1. BACQFUJZUHPM
 - ☒ 2. BACQDWJZUHPM
 - ☒ 3. BACSFUIZUHPM
 - ☒ 4. BCCQFWJZUHPM

Question ID : 264330147315

Status : Answered

Chosen Option : 1

Q.20 What will come in the place of the question mark (?) in the following equation if '+' and '-' are interchanged and '*' and '÷' are interchanged?

$$24 \div 4 - 9 \times 3 + 6 = ?$$

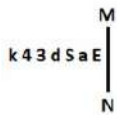
- Ans**
- ☒ 1. 38
 - ☒ 2. 29
 - ☒ 3. 42
 - ☒ 4. 36

Question ID : 264330151028

Status : Answered

Chosen Option : 1

Q.21 Select the correct mirror image of the given figure when the mirror is placed at MN as shown below.



- Ans
- ☒ 1. Ee2b34k
 - ☒ 2. Ee2b34k
 - ☒ 3. k4bSaE
 - ☒ 4. k4p29E

Question ID : 264330146687

Status : Answered

Chosen Option : 2

Q.22 In a certain code language, 'it's his turn' is written as 'hg mp sq' and 'turn your back' is written as 'sq lr zn'. How will 'turn' be written in the given language?

- Ans
- ☒ 1. zn
 - ☒ 2. hg
 - ☒ 3. lr
 - ☒ 4. sq

Question ID : 264330150109

Status : Answered

Chosen Option : 4

Q.23 DHMN is related to DMNH in a certain way based on the English alphabetical order. In the same way, PTSQ is related to PSQT. To which of the following is JITA related to following the same logic?

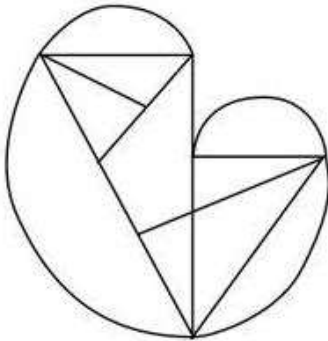
- Ans
- ☒ 1. JTAL
 - ☒ 2. ATLJ
 - ☒ 3. LTJA
 - ☒ 4. JATL

Question ID : 264330147109

Status : Answered

Chosen Option : 1

Q.24 How many triangles are there in the given figure?



- Ans
- ✓ 1. 10
 - ✗ 2. 12
 - ✗ 3. 8
 - ✗ 4. 9

Question ID : 264330146933
Status : Answered
Chosen Option : 1

Q.25 If 15 January 1997 is Wednesday, then what will be the day of the week on 5 January 2000?

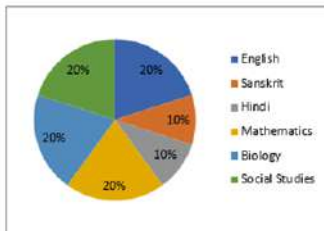
- Ans
- ✗ 1. Friday
 - ✗ 2. Sunday
 - ✓ 3. Wednesday
 - ✗ 4. Thursday

Question ID : 264330147174
Status : Answered
Chosen Option : 3

Section : Quantitative Aptitude

Q.1 Study the given pie-chart and answer the question that follows.

Percentage-wise distribution of teachers in six different subjects in a school is given in the pie-chart. The total number of teachers is 600. The ratio of male and female teachers is 3 : 1.



Find the ratio of teachers in Sanskrit and Hindi to teachers in Mathematics and Biology.

- Ans** ✓ 1. 1 : 2
 ✗ 2. 3 : 1
 ✗ 3. 2 : 1
 ✗ 4. 1 : 3

Question ID : 264330148150
 Status : Answered
 Chosen Option : 1

Q.2 If the radius of a circle is 8 cm, then find the length of its largest chord.

- Ans** ✓ 1. 16 cm
 ✗ 2. 64 cm
 ✗ 3. 8 cm
 ✗ 4. 4 cm

Question ID : 264330147643
 Status : Answered
 Chosen Option : 1

Q.3 Find the value of $\sin 60^\circ \sec 30^\circ + \tan 45^\circ \cos 0^\circ + \sec 60^\circ \sin 30^\circ$.

- Ans** ✗ 1. 0
 ✓ 2. 3
 ✗ 3. 1
 ✗ 4. 2

Question ID : 264330146537
 Status : Answered
 Chosen Option : 2

Q.4 Rumi used to save 20% of her income. If her income went up by 30%, while her expenditure went up by 40%, her nominal savings went down by ₹750. Find Rumi's initial income (in ₹).

- Ans**
- ☒ 1. 36,000
 - ☒ 2. 37,500
 - ☒ 3. 35,000
 - ☒ 4. 38,500

Question ID : 264330146781
Status : Answered
Chosen Option : 3

Q.5 If $\sin\theta \cdot \sin 45^\circ = \sin 30^\circ$ and θ is an acute angle, then 2θ is equal to:

- Ans**
- ☒ 1. 45°
 - ☒ 2. 0°
 - ☒ 3. 30°
 - ☒ 4. 90°

Question ID : 264330149282
Status : Answered
Chosen Option : 4

Q.6 Akhilesh invested a certain sum which amounted to ₹82,000 in 2 years at 6% per annum compound interest, compounded annually. What was the sum invested (in ₹) by Akhilesh? (round off to the nearest integer)

- Ans**
- ☒ 1. 73,980
 - ☒ 2. 72,680
 - ☒ 3. 72,980
 - ☒ 4. 70,980

Question ID : 264330148748
Status : Not Answered
Chosen Option : --

Q.7 A jar contains 35% syrup in the mixture of syrup and water. A part of this mixture is replaced by another mixture containing 20% syrup. Now, in the new mixture, the percentage of syrup is found to be 24%. What is the ratio in which these mixtures were mixed to obtain the new mixture?

- Ans**
- ☒ 1. 3 : 14
 - ☒ 2. 4 : 11
 - ☒ 3. 5 : 13
 - ☒ 4. 7 : 10

Question ID : 264330149410
Status : Answered
Chosen Option : 2

Q.8 The radius of a circle is 21 cm. What will be the area (in cm^2) of a sector of the circle that subtends a 22.5° angle at the centre? [Use $\pi = \frac{22}{7}$]

- Ans**
- ☒ 1. 86.6205
 - ☒ 2. 86.0625
 - ☒ 3. 86.6250
 - ☒ 4. 86.6025

Question ID : 264330146825
Status : Answered
Chosen Option : 3

Q.9 For what positive value of k, the equation $3x^2 + 2kx + 3 = 0$ has real and equal roots?

- Ans**
- ☒ 1. 12
 - ☒ 2. 1
 - ☒ 3. 3
 - ☒ 4. 9

Question ID : 264330150837
Status : Not Answered
Chosen Option : --

Q.10 The selling price of 34 articles is equal to the cost price of 38 articles. What is the gain percentage?

- Ans**
- ☒ 1. $7\frac{6}{17}\%$
 - ☒ 2. $10\frac{3}{17}\%$
 - ☒ 3. $11\frac{13}{17}\%$
 - ☒ 4. $9\frac{8}{17}\%$

Question ID : 264330148787
Status : Answered
Chosen Option : 3

Q.11 The algebraic expression $2x^2 - 32$ is equal to _____.

- Ans**
- ☒ 1. $2(x - 4)^2$
 - ☒ 2. $(x + 4)(x - 4)$
 - ☒ 3. $2(x + 4)^2$
 - ☒ 4. $2(x + 4)(x - 4)$

Question ID : 264330147880
Status : Answered
Chosen Option : 2

Q.12 In a square ABCD, E is a point inside the square such that $\triangle DEC$ is an equilateral triangle. If E is joined to vertices A and B of the square, what is the degree measure of $\angle AEB$?

- Ans**
- ☒ 1. 135°
 - ☒ 2. 150°
 - ☒ 3. 210°
 - ☒ 4. 225°

Question ID : 264330151060
Status : Answered
Chosen Option : 2

Q.13 If $\left(x - \frac{1}{x}\right) = 0.4$, and $x > 0$, what is the value of $\left(x^2 + \frac{1}{x^2}\right)$?

- Ans**
- ☒ 1. 4.16
 - ☒ 2. 3.32
 - ☒ 3. 1.84
 - ☒ 4. 2.16

Question ID : 264330151434
Status : Answered
Chosen Option : 4

Q.14 What is the length (in cm) of the chord of a circle whose radius is 13 cm and whose perpendicular distance from the chord to the centre is 5 cm?

- Ans**
- ☒ 1. 18
 - ☒ 2. 24
 - ☒ 3. 12
 - ☒ 4. 30

Question ID : 264330147793
Status : Answered
Chosen Option : 2

Q.15 A and B can finish a work in 6 days and 4 days, respectively. A alone worked on it for 2 days. Thereafter, B joined him. How much total time was taken by them to finish the work?

- Ans**
- ☒ 1. $3\frac{3}{5}$ days
 - ☒ 2. $1\frac{3}{5}$ days
 - ☒ 3. $3\frac{1}{5}$ days
 - ☒ 4. $4\frac{1}{5}$ days

Question ID : 264330147713
Status : Answered
Chosen Option : 1

Q.16 The present age of a father is twice that of his son. 8.5 years hence the ratio would be 7 : 4. Find the son's present age.

- Ans**
- ☒ 1. 25.5 years
 - ☐ 2. 16.5 years
 - ☐ 3. 20.5 years
 - ☐ 4. 24.6 years

Question ID : 264330148243
Status : Answered
Chosen Option : 1

Q.17 If $\left(x + \frac{1}{x}\right) = 5$, then the value of $\left(x^5 + \frac{1}{x^5}\right)$ is:

- Ans**
- ☐ 1. 2535
 - ☐ 2. 2540
 - ☐ 3. 2515
 - ☒ 4. 2525

Question ID : 264330148076
Status : Answered
Chosen Option : 4

Q.18 What is the least number that must be added to the greatest 6-digit number so that the sum will be exactly divisible by 294?

- Ans**
- ☐ 1. 234
 - ☐ 2. 194
 - ☐ 3. 269
 - ☒ 4. 189

Question ID : 264330149408
Status : Answered
Chosen Option : 4

Q.19 A shopkeeper offers the following discount schemes for the purchase of his goods. Find the scheme which has the maximum discount.

- (i) Two successive discounts of 20% and 10%
- (ii) Discount of 10%
- (iii) Buy 8 and get 4 free
- (iv) Buy 9 and get 6 free

- Ans**
- ☐ 1. (iii)
 - ☐ 2. (ii)
 - ☐ 3. (i)
 - ☒ 4. (iv)

Question ID : 264330147749
Status : Answered
Chosen Option : 3

Q.20 A solid rectangular block of metal of dimensions $88 \text{ cm} \times 21 \text{ cm} \times 21 \text{ cm}$, is melted to form a solid sphere. What is its radius (in cm)?

Take $\pi = \frac{22}{7}$

- Ans**
- ☒ 1. 28
 - ☒ 2. 35
 - ☒ 3. 21
 - ☒ 4. 14

Question ID : 264330147787

Status : Answered

Chosen Option : 3

Q.21 A shopkeeper named Ramesh marks his articles at such a price that, even after allowing a discount of 20% on the marked price, he earns a profit of 15%. What is the marked price of one article, which costs ₹5,600?

- Ans**
- ☒ 1. ₹10,550
 - ☒ 2. ₹9,000
 - ☒ 3. ₹7,950
 - ☒ 4. ₹8,050

Question ID : 264330149420

Status : Answered

Chosen Option : 4

Q.22 The table shows the annual income of 5 schools in thousands:

Source of income	Schools				
	P	Q	R	S	T
Tuition fee	120	60	210	90	120
Activity fee	24	12	45	24	30
Grants	54	21	60	51	60

In how many schools is the tuition fee less than four times the activity fee?

- Ans**
- ☒ 1. 4
 - ☒ 2. 1
 - ☒ 3. 3
 - ☒ 4. 2

Question ID : 264330148425

Status : Answered

Chosen Option : 4

Q.23 The table given below shows the number of television sets that were sold by the showrooms X, Y, Z, L, M, N from the year 2016 to 2019. Answer the question given below based on the information given in the table.

Years / Showroom	X	Y	Z	L	M	N
2016	234	167	179	176	187	273
2017	180	274	269	98	370	195
2018	130	151	236	176	239	277
2019	264	107	237	225	282	237

How many more television sets were sold by all the showrooms in the year 2017 as compared to 2019?

- Ans**
- ☐ 1. 67
 - ☐ 2. 43
 - ☐ 3. 93
 - ☒ 4. 34

Question ID : 264330148755

Status : Not Answered

Chosen Option : --

Q.24 A train running at 26.5 km/h takes 18 s to pass a platform. Next, it takes 12 s to pass a man walking at 5 km/h in the opposite direction. Find the length of the platform.

- Ans**
- ☐ 1. 22.5 m
 - ☒ 2. 27.5 m
 - ☐ 3. 10.0 m
 - ☐ 4. 12.5 m

Question ID : 264330150134

Status : Not Answered

Chosen Option : --

Q.25 In ΔOPQ , right-angled at P, $OP = 7$ cm and $OQ - PQ = 1$ cm. Determine the values of $\sin Q + \cos Q$.

- Ans**
- ☐ 1. $\frac{13}{25}$
 - ☐ 2. $\frac{21}{25}$
 - ☒ 3. $\frac{31}{25}$
 - ☐ 4. $\frac{33}{25}$

Question ID : 264330148770

Status : Answered

Chosen Option : 3

Section : General Awareness

Q.1 Which of the following options is correct for Coulomb's law?

- Ans
- ☐ 1. Valid for both point and distributed charges
 - ☐ 2. Valid for only distributed charge
 - ☒ 3. Valid for only point charge
 - ☐ 4. Valid for neither point charge nor distributed charge

Question ID : 264330144460
Status : Answered
Chosen Option : 2

Q.2 In which city was the SEWA Cooperative Bank first initiated in 1974?

- Ans
- ☐ 1. Jaipur
 - ☐ 2. Lucknow
 - ☒ 3. Ahmedabad
 - ☐ 4. Bhopal

Question ID : 264330145694
Status : Answered
Chosen Option : 2

Q.3 Who was appointed Chief Justice of the Calcutta High Court in May 2023?

- Ans
- ☐ 1. Debasish Kar Gupta
 - ☐ 2. Sandeep Mehta
 - ☒ 3. T. S. Sivagnanam
 - ☐ 4. Prakash Shrivastava

Question ID : 264330150060
Status : Answered
Chosen Option : 1

Q.4 Which ecologist showed in a long-term experiment on outdoor plots that biodiversity is of central importance to the productivity, stability, resistance to the invasion of ecosystems and fertility of their soils?

- Ans
- ☐ 1. Karl Mobius
 - ☒ 2. David Tilman
 - ☐ 3. Herbert Spencer
 - ☐ 4. Edward Osborne Wilson

Question ID : 264330145623
Status : Answered
Chosen Option : 3

Q.5 As per the Census of 2011, the literacy rate of India is _____.

- Ans ☒ 1. 74.04%
☒ 2. 74.60%
☒ 3. 74.80%
☒ 4. 74%

Question ID : 264330150332
 Status : Answered
 Chosen Option : 1

Q.6 The second G20 Health Ministers Meeting (held in October 2022), which was addressed by Dr Mansukh Mandaviya, Union Minister for Health and Family Welfare, was held in:

- Ans ☒ 1. Kathmandu, Nepal
☒ 2. New Delhi, India
☒ 3. Bali, Indonesia
☒ 4. Thimpu, Bhutan

Question ID : 264330150378
 Status : Answered
 Chosen Option : 2

Q.7 In the FINA World Swimming Championships (25m) 2022, which player set a national record in 100 m breaststroke?

- Ans ☒ 1. Chahat Arora
☒ 2. Sangeeta Puri
☒ 3. Dolly Nazir
☒ 4. Arati Saha

Question ID : 264330146279
 Status : Answered
 Chosen Option : 1

Q.8 With regard to the Currency Deposit Ratio (CDR), all of the following is true, EXCEPT:

- Ans ☒ 1. It depends on seasonal pattern of expenditure.
☒ 2. It is a behavioural parameter.
☒ 3. During festive season the CDR typically declines.
☒ 4. It reflects people's preference for liquidity.

Question ID : 264330144689
 Status : Answered
 Chosen Option : 3

Q.9 The government scheme, Pradhan Mantri Fasal Bima Yojana aims for crop insurance service for farmers. This type of government efforts falls under _____ of the Directive Principles of the Indian Constitution.

- Ans**
- ☒ 1. Article 47
 - ☒ 2. Article 45
 - ☒ 3. Article 48
 - ☒ 4. Article 46

Question ID : 264330151230
Status : Answered
Chosen Option : 2

Q.10 Identify the true statement.

- Ans**
- ☒ 1. If real GDP is 240 and price index is 120, nominal GDP is 200.
 - ☒ 2. If real GDP is 500 and price index is 200, nominal GDP is 250.
 - ☒ 3. If real GDP is 500 and price index is 200, nominal GDP is 700.
 - ☒ 4. If real GDP is 240 and price index is 120, nominal GDP is 288.

Question ID : 264330145726
Status : Answered
Chosen Option : 3

Q.11 Match the items in List I with those in List II.

Measure of National Income

Formula

- | | |
|----------|---|
| i. GNP | a. $GNP - Depreciation$ |
| ii. NNP | b. $C + I + G + \text{Net exports}$ |
| iii. GDP | c. $GDP - Depreciation$ |
| iv. NDP | d. $GDP + \text{Net factor income from abroad}$ |

- Ans**
- ☒ 1. i-b, ii-d, iii-a, iv-c
 - ☒ 2. i-a, ii-c, iii-d, iv-b
 - ☒ 3. i-d, ii-a, iii-b, iv-c
 - ☒ 4. i-c, ii-b, iii-d, iv-a

Question ID : 264330151343
Status : Answered
Chosen Option : 2

Q.12 Oxolane is a synonym of which compound having the molecular formula $(\text{CH}_2)_3\text{CH}_2\text{O}$?

- Ans**
- ☒ 1. Thiophene
 - ☒ 2. Tetrahedrane
 - ☒ 3. Tetrahydrofuran
 - ☒ 4. Tropolone

Question ID : 264330145579
Status : Answered
Chosen Option : 2

Q.13 Who among the following signed a Tripartite treaty on behalf of the British Government to interfere in the affairs of Afghanistan?

- Ans**
- ☒ 1. Lord Mayo
 - ☒ 2. Lord Auckland
 - ☒ 3. Lord Wellesly
 - ☒ 4. Lord Canning

Question ID : 264330152554
Status : Answered
Chosen Option : 1

Q.14 Ebony, mahogany, and rosewood trees are part of which type of forest?

- Ans**
- ☒ 1. Temperate forest
 - ☒ 2. Tropical deciduous forest
 - ☒ 3. Tropical evergreen forest
 - ☒ 4. Alpine vegetation

Question ID : 264330149399
Status : Answered
Chosen Option : 3

Q.15 Consider the following statements in context to Dolhu Kunitha dance. Select the correct statements.

- a) It is a popular dance of Karnataka.
- b) Drums are adorned with colourful clothes.
- c) Religious and battle fervor songs are sung.

- Ans**
- ☒ 1. Only a
 - ☒ 2. a, b, c
 - ☒ 3. Only a, b
 - ☒ 4. Only b, c

Question ID : 264330150813
Status : Answered
Chosen Option : 2

Q.16 Who among the following was a popular music director in India?

- Ans
- ☒ 1. Birju Maharaj
 - ☒ 2. Bappi Lahiri
 - ☒ 3. Kaifi Azmi
 - ☒ 4. Anjaan

Question ID : 264330151251
Status : Answered
Chosen Option : 2

Q.17 The appeal 'How's that?' is associated with _____.

- Ans
- ☒ 1. Badminton
 - ☒ 2. Volleyball
 - ☒ 3. Hockey
 - ☒ 4. Cricket

Question ID : 264330146009
Status : Answered
Chosen Option : 4

Q.18 In 1950, which Russian astronomer revised the 'nebular hypothesis', proposing that the sun is surrounded by a solar nebula consisting mainly of hydrogen and helium as well as dust?

- Ans
- ☒ 1. Viktor Safronov
 - ☒ 2. George Gamow
 - ☒ 3. Naum Idelson
 - ☒ 4. Otto Schmidt

Question ID : 264330145638
Status : Answered
Chosen Option : 4

Q.19 Ranjumoni Saikia won the Sangeet Natak Akademi Award of 2019 for which dance form?

- Ans
- ☒ 1. Sattriya
 - ☒ 2. Odissi
 - ☒ 3. Bharatanatyam
 - ☒ 4. Chhau

Question ID : 264330151213
Status : Answered
Chosen Option : 1

Q.20 Which Article of the Indian Constitution mentions that laws that are inconsistent with or in derogation of any of the fundamental rights shall be void?

- Ans**
- ☐ 1. Article 15
 - ☐ 2. Article 14
 - ☐ 3. Article 16
 - ☒ 4. Article 13

Question ID : 264330149942
Status : Answered
Chosen Option : 1

Q.21 Which of the following honours did Manisha Ramadass receive in 2022?

- Ans**
- ☐ 1. Para Badminton Pair of the year by the World Badminton Federation (BWF)
 - ☐ 2. Female player of the year by Government of India
 - ☐ 3. Most Improved Player of the year by Sports Authority of India (SAI)
 - ☒ 4. Best Female Para Badminton Player of the year by the World Badminton Federation (BWF)

Question ID : 264330150075
Status : Answered
Chosen Option : 4

Q.22 Which of the following agencies has undertaken the Golden Quadrilateral project?

- Ans**
- ☐ 1. National Highways and Infrastructure Development Corporation Limited
 - ☐ 2. Indian Roads Construction Corporation
 - ☒ 3. National Highways Authority of India
 - ☐ 4. Border Road Organisation

Question ID : 264330149355
Status : Answered
Chosen Option : 3

Q.23 Indian festival Dussehra is a famous celebration that takes place at which of the following?

- Ans**
- ☒ 1. Mysore Palace
 - ☐ 2. Nizam Palace
 - ☐ 3. Mayurbhanj Palace
 - ☐ 4. Jaipur Palace

Question ID : 264330145742
Status : Answered
Chosen Option : 1

Q.24 Who among the following rulers invaded Malaya to liberate their trade with China?

- Ans**
- ☒ 1. Pallava
 - ☒ 2. Chola
 - ☒ 3. Chalukya
 - ☒ 4. Rashtrakuta

Question ID : 264330148567
Status : Answered
Chosen Option : 1

Q.25 Which of the following is NOT one of the factors that has contributed towards localisation of the cotton textile industry in India?

- Ans**
- ☒ 1. Dry climate
 - ☒ 2. Accessible port facilities
 - ☒ 3. Availability of labour
 - ☒ 4. Availability of raw cotton

Question ID : 264330145867
Status : Answered
Chosen Option : 2