

## Combined Higher Secondary Level Examination 2023 Tier I

Roll Number	
Candidate Name	
Venue Name	
Exam Date	09/08/2023
Exam Time	9:00 AM - 10:00 AM
Subject	CHSL Exam 2023 Tier I

## Section : English Language

Q.1 Select the most appropriate synonym of the given word.

Makeshift

- Ans ☒ 1. Resourceful  
☒ 2. Provisional  
☒ 3. Perpetual  
☒ 4. Inconsiderate

Question ID : 264330143973

Status : Answered

Chosen Option : 2

Q.2 Select the most appropriate synonym of the given word from the following sentence.

Ambitious

He aspires to be a future diplomat but he will have to improve his decision-making skills.

- Ans ☒ 1. aspires  
☒ 2. improve  
☒ 3. decision  
☒ 4. skills

Question ID : 264330141292

Status : Answered

Chosen Option : 1

Q.3 Select the most appropriate option that can substitute the underlined word in the given sentence.

The fall of Ranjith for the petty material benefit was really ignominious.

- Ans ☒ 1. unfaltering  
☒ 2. amusing  
☒ 3. reprehensible  
☒ 4. ignorable

Question ID : 264330143980

Status : Answered

Chosen Option : 3

# Test Prime

**ALL EXAMS,  
ONE SUBSCRIPTION**



**70,000+**  
Mock Tests



**Personalised  
Report Card**



**Unlimited  
Re-Attempt**



**600+**  
Exam Covered



**Previous Year  
Papers**



**500%  
Refund**



**ATTEMPT FREE MOCK NOW**

Q.4 Select the option that can be used as a one-word substitute for the underlined group of words.

WHO is an organisation that raises money for a particular cause.

- Ans
- ☒ 1. donation
  - ☒ 2. volunteer
  - ☒ 3. charity
  - ☒ 4. fundraiser

Question ID : 264330144144  
Status : Answered  
Chosen Option : 4

Q.5 Select the most appropriate option that can substitute the underlined words in the given sentence.

The new restaurant is more better than the old one.

- Ans
- ☒ 1. most better
  - ☒ 2. better
  - ☒ 3. much more better
  - ☒ 4. the best

Question ID : 264330142566  
Status : Answered  
Chosen Option : 2

Q.6 Select the option that expresses the given sentence in passive voice.  
The teacher did not allow the students to leave the lecture.

- Ans
- ☒ 1. The students are not allowed to leave the lecture.
  - ☒ 2. The students had not been allowed to leave the lecture by the teacher.
  - ☒ 3. The students had not allowed the teacher to leave the lecture.
  - ☒ 4. The students were not allowed to leave the lecture by the teacher.

Question ID : 264330150103  
Status : Answered  
Chosen Option : 4

Q.7 Select the most appropriate idiom for the underlined segment in the following sentence.

The servants know the secrets of the family they are working for.

- Ans
- ☒ 1. Ins and outs
  - ☒ 2. Latin and Greek
  - ☒ 3. Hornet's nest
  - ☒ 4. Long and short

Question ID : 264330149548  
Status : Answered  
Chosen Option : 1

Q.8 The following sentence has been split into four segments. Identify the segment that contains a grammatical error.

Washington Irving's writing career started at / the tender age of nineteen when he joined / his brother Peter's newspaper The Morning Chronical / as journalist.

- Ans
- ☒ 1. his brother Peter's newspaper The Morning Chronical
  - ☒ 2. Washington Irving's writing career started at
  - ☒ 3. as journalist
  - ☒ 4. the tender age of nineteen when he joined

Question ID : 264330148694

Status : Answered

Chosen Option : 3

Q.9 Sentences of a paragraph are given below in jumbled order. Arrange the sentences in the correct order to form a meaningful and coherent paragraph.

- A. Isabel saw a strange rabbit running through the bushes.
- B. Following it, she found a door which she opened with the help of keys.
- C. After that, she felt a strange sensation in her body.
- D. She thought as if she was in a dream.

- Ans
- ☒ 1. CDAB
  - ☒ 2. DCAB
  - ☒ 3. BCDA
  - ☒ 4. ABCD

Question ID : 264330147609

Status : Answered

Chosen Option : 4

Q.10 Select the most appropriate ANTONYM of the word in brackets to fill in the blank.

After the rain stopped, the air smelled fresh and clean, and the sun \_\_\_\_\_ (stared) out from behind the clouds.

- Ans
- ☒ 1. peeked
  - ☒ 2. observed
  - ☒ 3. spied
  - ☒ 4. surveyed

Question ID : 264330149822

Status : Answered

Chosen Option : 1

Q.11 Select the most appropriate homophone to fill in the blank.

Developers \_\_\_\_\_ the old buildings on the site to make way for new construction.

- Ans
- ☒ 1. raze
  - ☒ 2. rays
  - ☒ 3. raise
  - ☒ 4. rase

Question ID : 264330148945

Status : Answered

Chosen Option : 3

Q.12 Sentences of a paragraph are given below in jumbled order. Arrange the sentences in the correct order to form a meaningful and coherent paragraph.

- (A) The new movie was highly anticipated by fans of the franchise.  
(B) As the lights dimmed, the audience grew quiet in anticipation.  
(C) The movie began with an exciting action sequence that had the audience on the edge of their seats.  
(D) The movie theatre was packed with people eager to see it.

Ans ☒ 1. CBDA

☒ 2. BCDA

☒ 3. ADBC

☒ 4. DBAC

Question ID : 264330144202

Status : Answered

Chosen Option : 4

Q.13 Select the correctly spelt word.

Ans ☒ 1. Suspicion

☒ 2. Susspicion

☒ 3. Susppicion

☒ 4. Suspicon

Question ID : 264330143949

Status : Answered

Chosen Option : 1

Q.14 Select the most appropriate idiom for the underlined segment in the following sentence.

Shruti is a strange person because of her attitude.

Ans ☒ 1. A one man

☒ 2. A scarlet woman

☒ 3. Queer fish

☒ 4. A straw man

Question ID : 264330149550

Status : Answered

Chosen Option : 3

Q.15 Parts of a sentence are given below in jumbled order. Select the option that arranges the parts in the correct order to form a meaningful sentence.

- A) the importance  
B) to be treated  
C) of treating other people  
D) now he knows  
E) as he would like

Ans ☒ 1. D, A, C, E, B

☒ 2. B, D, C, A, E

☒ 3. C, D, B, A, E

☒ 4. C, E, B, A, D

Question ID : 264330143912

Status : Answered

Chosen Option : 1

**Q.16** Select the option that can be used as a one-word substitute for the given group of words.

A form of government in which power is held by the nobility

- Ans ☒ 1. Democracy  
☒ 2. Aristocracy  
☒ 3. Republic  
☒ 4. Nobility

Question ID : 264330143934  
 Status : Answered  
 Chosen Option : 2

**Q.17** Choose the correct meaning of the underlined word in the given sentence.

The World Health Organization has finally issued guidelines to prevent the spread of the Covid-19 epidemic.

- Ans ☒ 1. A large number of people or animals suffering from the same disease at the same time  
☒ 2. An infection which is caused by viruses  
☒ 3. An infection that spreads slowly  
☒ 4. A disease which lasts for more than fifty years

Question ID : 264330149746  
 Status : Answered  
 Chosen Option : 1

**Q.18** Select the most appropriate option that expresses the given sentence in passive voice.

The professor assigns the homework every week.

- Ans ☒ 1. The homework is assigning by the professor every week.  
☒ 2. The homework will be assigned by the professor every week.  
☒ 3. The homework assigns by the professor every week.  
☒ 4. The homework is assigned by the professor every week.

Question ID : 264330144185  
 Status : Answered  
 Chosen Option : 4

**Q.19** Select the INCORRECTLY spelt word.

The Special Task Force will conduct a thorough probe in the land scam case which has Mr. Lakhan Lal as the prime akused.

- Ans ☒ 1. Scam  
☒ 2. Prime  
☒ 3. Thorough  
☒ 4. Akused

Question ID : 264330144130  
 Status : Answered  
 Chosen Option : 4

Q.20 Select the most appropriate ANTONYM to substitute the underlined word in the given sentence.

The newly selected secretary of the party has a/an impeccable image among the public.

- Ans
- ☒ 1. Refurbished
  - ☒ 2. Blemished
  - ☒ 3. Irresistible
  - ☒ 4. Arbitrary

Question ID : 264330143987

Status : Answered

Chosen Option : 4

**Comprehension:**

In the following passage, some words have been deleted. Read the passage carefully and select the most appropriate option to fill in each blank.

Upgrading the higher education sector especially in terms of patents filed and cutting-edge research output is (1)\_\_\_\_\_ in improving India's global ranking. Our sustainable (2)\_\_\_\_\_ development depends on human resources. A quality higher education base is essential to reap the full benefits of our demographic dividend. In higher education, the strategies of the 12th plan (3)\_\_\_\_\_ on technical education, distance learning, quality research, infrastructure, faculty, and curriculum content. (4)\_\_\_\_\_ efforts of the government departments and the private sector are needed to (5)\_\_\_\_\_ the plan's educational goals.

SubQuestion No : 21

Q.21 Select the most appropriate option to fill in blank number 1.

- Ans
- ☒ 1. unrequired
  - ☒ 2. deserving
  - ☒ 3. fulfilling
  - ☒ 4. essential

Question ID : 264330148740

Status : Answered

Chosen Option : 4

**Comprehension:**

In the following passage, some words have been deleted. Read the passage carefully and select the most appropriate option to fill in each blank.

Upgrading the higher education sector especially in terms of patents filed and cutting-edge research output is (1)\_\_\_\_\_ in improving India's global ranking. Our sustainable (2)\_\_\_\_\_ development depends on human resources. A quality higher education base is essential to reap the full benefits of our demographic dividend. In higher education, the strategies of the 12th plan (3)\_\_\_\_\_ on technical education, distance learning, quality research, infrastructure, faculty, and curriculum content. (4)\_\_\_\_\_ efforts of the government departments and the private sector are needed to (5)\_\_\_\_\_ the plan's educational goals.

SubQuestion No : 22

Q.22 Select the most appropriate option to fill in blank number 2.

- Ans
- ☒ 1. social
  - ☒ 2. economic
  - ☒ 3. psychological
  - ☒ 4. political

Question ID : 264330148741

Status : Answered

Chosen Option : 2

**Comprehension:**

In the following passage, some words have been deleted. Read the passage carefully and select the most appropriate option to fill in each blank.

Upgrading the higher education sector especially in terms of patents filed and cutting-edge research output is (1)\_\_\_\_\_ in improving India's global ranking. Our sustainable (2)\_\_\_\_\_ development depends on human resources. A quality higher education base is essential to reap the full benefits of our demographic dividend. In higher education, the strategies of the 12th plan (3)\_\_\_\_\_ on technical education, distance learning, quality research, infrastructure, faculty, and curriculum content. (4)\_\_\_\_\_ efforts of the government departments and the private sector are needed to (5)\_\_\_\_\_ the plan's educational goals.

**SubQuestion No : 23**

**Q.23** Select the most appropriate option to fill in blank number 3.

- Ans ☒ 1. understand  
☒ 2. attend  
☒ 3. divert  
☒ 4. focus

Question ID : 264330148742

Status : Answered

Chosen Option : 4

**Comprehension:**

In the following passage, some words have been deleted. Read the passage carefully and select the most appropriate option to fill in each blank.

Upgrading the higher education sector especially in terms of patents filed and cutting-edge research output is (1)\_\_\_\_\_ in improving India's global ranking. Our sustainable (2)\_\_\_\_\_ development depends on human resources. A quality higher education base is essential to reap the full benefits of our demographic dividend. In higher education, the strategies of the 12th plan (3)\_\_\_\_\_ on technical education, distance learning, quality research, infrastructure, faculty, and curriculum content. (4)\_\_\_\_\_ efforts of the government departments and the private sector are needed to (5)\_\_\_\_\_ the plan's educational goals.

**SubQuestion No : 24**

**Q.24** Select the most appropriate option to fill in blank number 4.

- Ans ☒ 1. Sustained  
☒ 2. Compromised  
☒ 3. Coordinated  
☒ 4. Gathered

Question ID : 264330148743

Status : Answered

Chosen Option : 1



**Comprehension:**

In the following passage, some words have been deleted. Read the passage carefully and select the most appropriate option to fill in each blank.

Upgrading the higher education sector especially in terms of patents filed and cutting-edge research output is (1)\_\_\_\_\_ in improving India's global ranking. Our sustainable (2)\_\_\_\_\_ development depends on human resources. A quality higher education base is essential to reap the full benefits of our demographic dividend. In higher education, the strategies of the 12th plan (3)\_\_\_\_\_ on technical education, distance learning, quality research, infrastructure, faculty, and curriculum content. (4)\_\_\_\_\_ efforts of the government departments and the private sector are needed to (5)\_\_\_\_\_ the plan's educational goals.

**SubQuestion No : 25**

**Q.25** Select the most appropriate option to fill in blank number 5.

- Ans ☒ 1. remain  
☒ 2. realise  
☒ 3. conclude  
☒ 4. conduct

Question ID : 264330148744  
 Status : Answered  
 Chosen Option : 2

**Section : General Intelligence**

**Q.1** What should come in place of the question mark (?) in the given series?

5 11 17 ? 29 35

- Ans ☒ 1. 23  
☒ 2. 22  
☒ 3. 24  
☒ 4. 25

Question ID : 264330151010  
 Status : Answered  
 Chosen Option : 1

**Q.2** What should come in place of X in the given series?

22 31 49 76 112 X

- Ans ☒ 1. 152  
☒ 2. 157  
☒ 3. 159  
☒ 4. 149

Question ID : 264330152163  
 Status : Answered  
 Chosen Option : 2

**Q.3** DM 12 is related to HQ 17 in a certain way. In the same way, TS 19 is related to XW 24. To which of the following is KG 17 related following the same logic?

- Ans**
- ☒ 1. MK 20
  - ☒ 2. OK 22
  - ☒ 3. NK 22
  - ☒ 4. NJ 21

Question ID : 264330151985  
Status : Answered  
Chosen Option : 2

**Q.4** Select the term from among the given options that can replace the question mark (?) in the following series based on the English alphabetical order.

ZAM, XCK, VEL, TGG, ?

- Ans**
- ☒ 1. SHH
  - ☒ 2. RIH
  - ☒ 3. RIE
  - ☒ 4. SIT

Question ID : 264330146863  
Status : Answered  
Chosen Option : 3

**Q.5** In a certain code language,

$A + B$  means 'A is the father of B'

$A - B$  means 'A is the brother of B'

$A \times B$  means 'A is the mother of B'

$A \div B$  means 'A is the sister of B'

Based on the above, how is I related to M if ' $I + J \div K \times L - M$ '?

- Ans**
- ☒ 1. Father
  - ☒ 2. Father's brother
  - ☒ 3. Mother's father
  - ☒ 4. Father's father

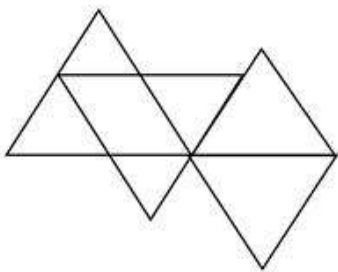
Question ID : 264330152007  
Status : Answered  
Chosen Option : 3

**Q.6** Each of the letters in the word KINGDOM are arranged in alphabetical order. How many letters are there in the English alphabetical series between the letter that is fourth from the left and the one that is extreme right in the new letter-cluster thus formed?

- Ans**
- ☒ 1. Two
  - ☒ 2. Six
  - ☒ 3. Three
  - ☒ 4. Five

Question ID : 264330146877  
Status : Answered  
Chosen Option : 1

**Q.7** How many triangles are there in the given figure?



- Ans**
- ☒ 1. 9
  - ☒ 2. 7
  - ☒ 3. 6
  - ☒ 4. 8

Question ID : 264330146927  
Status : Answered  
Chosen Option : 4

**Q.8** In a certain code language, 'YACHT' is coded as '8' and 'SHALEOD' is coded as '24'. How will 'ANALYSTIC' be coded in that language?

- Ans**
- ☒ 1. 40
  - ☒ 2. 26
  - ☒ 3. 44
  - ☒ 4. 20

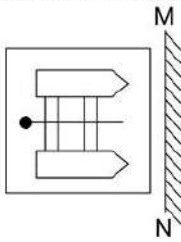
Question ID : 264330146378  
Status : Not Answered  
Chosen Option : --

**Q.9** 34 is related to 70 in a certain way. Following the same logic, 56 is related to 114. To which of the following is 23 related, following the same logic?

- Ans**
- ☒ 1. 39
  - ☒ 2. 52
  - ☒ 3. 48
  - ☒ 4. 47

Question ID : 264330150897  
Status : Answered  
Chosen Option : 3

**Q.10** Select the correct mirror image of the given figure when the mirror is placed at MN as shown.



**Ans**

- ☒ 1.
- ☒ 2.
- ☒ 3.
- ☒ 4.

Question ID : 264330146468  
Status : Answered  
Chosen Option : 3

**Q.11** Select the option in which the letter-clusters share the same relationship as that shared by the given pair of letter-clusters.

DKG : HSN

VLM : ZTT

- Ans**
- ☒ 1. RBI : VYG
  - ☒ 2. SPY : VXB
  - ☒ 3. KTY : OBF
  - ☒ 4. PBN : SLM

Question ID : 264330146951  
Status : Answered  
Chosen Option : 3

**Q.12** The second number in the given number pairs is obtained by performing certain mathematical operations(s) on the first number. The same operation(s) is/are followed in all the number pairs except one. Find that odd number pair.

- Ans**
- ☒ 1. 14 : 77
  - ☒ 2. 25 : 86
  - ☒ 3. 31 : 94
  - ☒ 4. 22 : 85

Question ID : 264330146755  
Status : Answered  
Chosen Option : 1

**Q.13** Select the term from among the given options that can replace the question mark (?) in the following series based on the English alphabetical order.

BYM, CWL, DUK, ESJ, ?

- Ans**
- ☒ 1. FQI
  - ☒ 2. FRI
  - ☒ 3. FQG
  - ☒ 4. FRG

Question ID : 264330146865  
Status : Answered  
Chosen Option : 1

**Q.14** Three of the following four are alike in a certain way and thus form a group. Which is the one that does NOT belong to that group?

- (1) 4 – 125
- (2) 3 – 64
- (3) 2 – 8
- (4) 6 – 343

- Ans**
- ☒ 1. 3
  - ☒ 2. 4
  - ☒ 3. 2
  - ☒ 4. 1

Question ID : 264330152166  
Status : Answered  
Chosen Option : 1

**Q.15** Select the term from the given options that can replace the question mark (?) in the given series to make it logically complete.  
DT 35, EU 33, ?, GW 29, HX 27

- Ans**
- ☒ 1. EX 30
  - ☒ 2. GV 33
  - ☒ 3. EW 32
  - ☒ 4. FV 31

Question ID : 264330147489  
Status : Answered  
Chosen Option : 4

**Q.16** Read the given statements and conclusions carefully. Assuming that the information given in the statements is true, even if it appears to be at variance with commonly known facts, decide which of the given conclusions logically follow(s) from the statements.

Statements:  
Some papers are buttons.  
All papers are flowers.  
All buttons are stamps.

Conclusions:  
(I) Some flowers are stamps.  
(II) Some buttons are flowers.

- Ans**
- ☒ 1. Only conclusion (I) follows
  - ☒ 2. Both conclusions (I) and (II) follow
  - ☒ 3. Only conclusion (II) follows
  - ☒ 4. Neither conclusion (I) nor (II) follows

Question ID : 264330146591  
Status : Answered  
Chosen Option : 2

**Q.17** What will come in the place of '?' in the following equation, if:

'+' is changed with '-'  
'-' is changed with '+'  
'÷' is changed with '×'  
'×' is unchanged

$$120 - 6 + 31 \div 8 \times 11 = ?$$

- Ans**
- ☒ 1. 69
  - ☒ 2. 73
  - ☒ 3. 77
  - ☒ 4. 55

Question ID : 264330152187  
Status : Answered  
Chosen Option : 3

**Q.18** Each of the letters in the word POINTED are arranged in alphabetical order. How many letters are there in the English alphabetical series between the letter that is third from the left and the one that is fourth from the right in the new letter-cluster thus formed?

- Ans**
- ☒ 1. Six
  - ☒ 2. Three
  - ☒ 3. Four
  - ☒ 4. Two

Question ID : 264330146879  
Status : Answered  
Chosen Option : 4

**Q.19** What will come in the place of '?' in the following equation, if '+' and '-' are interchanged and '×' and '÷' are interchanged?

$$41 + 7 + 125 \times 5 - 8 = ?$$

- Ans**
- ☒ 1. 370
  - ☒ 2. 270
  - ☒ 3. 170
  - ☒ 4. 470

Question ID : 264330147380  
Status : Answered  
Chosen Option : 2

**Q.20** In a certain code language,

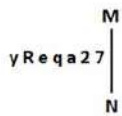
A + B means 'A is the son of B',  
A - B means 'A is the wife of B',  
A × B means 'A is the brother of B',  
A ÷ B means 'A is the mother of B'.

Based on the above, how is R related to T if 'P × Q ÷ R - S + T'?

- Ans**
- ☒ 1. Son's wife
  - ☒ 2. Daughter
  - ☒ 3. Mother's brother
  - ☒ 4. Brother

Question ID : 264330147281  
Status : Answered  
Chosen Option : 1

**Q.21** Select the correct mirror image of the given figure when the mirror is placed at MN as shown below.



- Ans**
- ☒ 1. 72apəRy
  - ☒ 2. 72apəRy
  - ☒ 3. 72apəRy
  - ☒ 4. 72apəRy

Question ID : 264330146704  
Status : Answered  
Chosen Option : 4

**Q.22** In a certain code language, 'always keep your secret' is written as 'pl zt rs mk' and 'your attitude is good' is written as 'nj mk hl yp'. How is 'your' written in the given language?

- Ans**
- ☒ 1. mk
  - ☒ 2. Nj
  - ☒ 3. yp
  - ☒ 4. Zt

Question ID : 264330147201  
Status : Answered  
Chosen Option : 1

**Q.23** Select the number pair in which the numbers are related in the same way as are the numbers of the given number pairs.

(NOTE: Operations should be performed on the whole numbers, without breaking down the numbers into their constituent digits. E.g., 13—Operations on 13 such as adding/deleting/multiplying etc. to 13 can be performed. Breaking down 13 into 1 and 3 and then performing mathematical operations on 1 and 3 is not allowed.)

5 : 50

12 : 288

- Ans**
- ☒ 1. 4 : 36
  - ☒ 2. 8 : 128
  - ☒ 3. 9 : 161
  - ☒ 4. 6 : 70

Question ID : 264330151019  
Status : Answered  
Chosen Option : 2



**Q.24** Three of the following four are alike in a certain way and thus form a group. Which is the one that does NOT belong to that group?

**Ans**

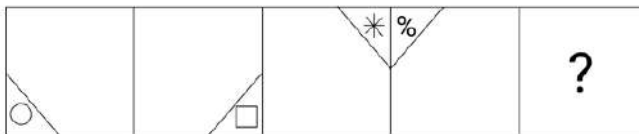
- ☒ 1. NRT
- ☒ 2. LPR
- ☒ 3. EIK
- ☒ 4. BFI

Question ID : 264330151970

Status : Answered

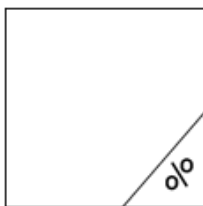
Chosen Option : 4

**Q.25** Identify the figure given in the options which when put in place of ? will logically complete the series.

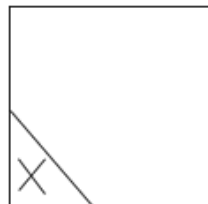


**Ans**

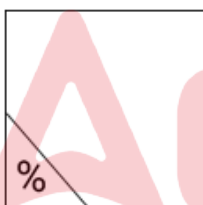
☒ 1.



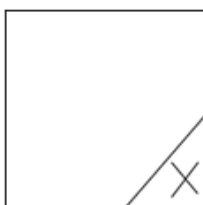
☒ 2.



☒ 3.



☒ 4.



Question ID : 264330146309

Status : Answered

Chosen Option : 2

Section : Quantitative Aptitude

**Q.1** The volume of a solid sphere is  $4500 \pi \text{ cm}^3$ . The surface area of the solid sphere is:

- Ans**
- ☒ 1.  $700 \pi \text{ cm}^2$
  - ☒ 2.  $850 \pi \text{ cm}^2$
  - ☒ 3.  $900 \pi \text{ cm}^2$
  - ☒ 4.  $810 \pi \text{ cm}^2$

Question ID : 264330148012

Status : Answered

Chosen Option : 3

**Q.2** Find the fourth proportion of the numbers  $\frac{1}{3}$ rd of 15,  $\frac{4}{5}$ th of 25,  $\frac{3}{7}$ th of 35:

- Ans**
- ☒ 1. 65
  - ☒ 2. 55
  - ☒ 3. 60
  - ☒ 4. 50

Question ID : 264330149440

Status : Answered

Chosen Option : 3

**Q.3** If  $\triangle ABC \sim \triangle PQR$ , the ratio of perimeter of  $\triangle ABC$  to perimeter of  $\triangle PQR$  is 36 : 23 and  $QR = 3.8 \text{ cm}$ , then the length of  $BC$  is:

- Ans**
- ☒ 1.  $4\frac{103}{121} \text{ cm}$
  - ☒ 2.  $3\frac{109}{121} \text{ cm}$
  - ☒ 3.  $5\frac{109}{115} \text{ cm}$
  - ☒ 4.  $3\frac{107}{115} \text{ cm}$

Question ID : 264330147841

Status : Answered

Chosen Option : 3

Q.4

Table shows year wise road accidents registered in a city during 2015 - 2018.

Accidents Years	Minor	Injury	Serious	Casualties
2015	160	125	55	30
2016	150	120	50	35
2017	210	170	30	25
2018	190	130	60	40

What is the percentage reduction in serious from the year 2016 to 2017?

- Ans
- ☐ 1. 35%
  - ☐ 2. 20%
  - ☐ 3. 25%
  - ☒ 4. 40%

Question ID : 264330148814  
Status : Answered  
Chosen Option : 4

Q.5

If  $x^2 - 4x - 1 = 0$ , then find the value of  $x^2 + \frac{1}{x^2} - 5$ .

- Ans
- ☐ 1. 17
  - ☐ 2. 12
  - ☐ 3. 15
  - ☒ 4. 13

Question ID : 264330147991  
Status : Answered  
Chosen Option : 4

Q.6

Simple interest on a certain sum is one-fourth of the sum and the interest rate per annum is four times the number of years. If the rate of interest increases by 2%, then how much will the simple interest (in ₹) be on ₹3,600 for 6 years?

- Ans
- ☐ 1. 2,562
  - ☐ 2. 2,514
  - ☐ 3. 2,642
  - ☒ 4. 2,592

Question ID : 264330151112  
Status : Answered  
Chosen Option : 4

Q.7

If  $\frac{\sin \theta - \cos \theta}{\sin \theta + \cos \theta} = \frac{4}{5}$ , then the value of  $\frac{\operatorname{cosec}^2 \theta}{2 - \operatorname{cosec}^2 \theta}$  is:

Ans

- ☒ 1.  $\frac{16}{25}$
- ☒ 2.  $\frac{40}{41}$
- ☒ 3.  $\frac{41}{40}$
- ☒ 4.  $\frac{31}{30}$

Question ID : 264330148280

Status : Answered

Chosen Option : 3

Q.8

Anil completed a certain journey by a car. If he covered 35% of the distance at 70 km/h, 40% of the distance at 80 km/h and the remaining distance at 50 km/h, his average speed (in km/h) for the entire journey is:

Ans

- ☒ 1.  $66\frac{2}{3}$  km/h
- ☒ 2.  $66\frac{1}{3}$  km/h
- ☒ 3.  $66\frac{1}{3}$  km/h
- ☒ 4.  $66\frac{4}{3}$  km/h

Question ID : 264330151199

Status : Answered

Chosen Option : 2

Q.9

$\triangle PQR$  is right angled at Q. If  $PQ = 12$  cm  $PR = 13$  cm, find  $\tan P + \cot R$ .

Ans

- ☒ 1.  $\frac{9}{10}$
- ☒ 2. 0
- ☒ 3.  $\frac{10}{12}$
- ☒ 4.  $\frac{12}{10}$

Question ID : 264330148772

Status : Answered

Chosen Option : 3

**Q.10** A table fan is marked at ₹1,700 and a discount of 15% is given. What is its selling price (in ₹)?

- Ans**
- ☒ 1. 1,454
  - ☒ 2. 1,425
  - ☒ 3. 1,445
  - ☒ 4. 1,554

Question ID : 264330150534  
Status : Answered  
Chosen Option : 3

**Q.11** A tradesman marks his goods 25% above the cost price and allows his customers a discount of 12% on their bill. How much % profit tradesman realizes?

- Ans**
- ☒ 1. 13%
  - ☒ 2. 11%
  - ☒ 3. 12%
  - ☒ 4. 10%

Question ID : 264330149324  
Status : Answered  
Chosen Option : 4

**Q.12** If 7 divides the integer  $n$ , then the remainder is 2. What will be the remainder if  $9n$  is divided by 7?

- Ans**
- ☒ 1. 3
  - ☒ 2. 5
  - ☒ 3. 1
  - ☒ 4. 4

Question ID : 264330148780  
Status : Answered  
Chosen Option : 4

**Q.13** The table given below shows the number of aerated drinks—A, B, C, D—manufactured (in thousands) by a company over the years.

YEAR	Aerated Drinks			
	A	B	C	D
2019	250	200	140	115
2020	200	230	170	120
2021	260	210	195	135
2022	275	175	190	155

Which aerated drink has the highest manufacturing number from 2019 to 2022?

- Ans**
- ☒ 1. D
  - ☒ 2. B
  - ☒ 3. A
  - ☒ 4. C

Question ID : **264330147671**  
Status : **Answered**  
Chosen Option : **3**

**Q.14** The largest chord of the circle is:

- Ans**
- ☒ 1. point
  - ☒ 2. tangent
  - ☒ 3. diameter
  - ☒ 4. radius

Question ID : **264330148275**  
Status : **Answered**  
Chosen Option : **3**

**Q.15** The difference between the simple interest and the compound interest on a certain amount at 9 % per annum for two years is ₹ 162, what is the principal?

- Ans**
- ☒ 1. ₹ 19700
  - ☒ 2. ₹ 19000
  - ☒ 3. ₹ 20000
  - ☒ 4. ₹ 19500

Question ID : **264330150827**  
Status : **Answered**  
Chosen Option : **3**

**Q.16** Two circles touch each other externally at any point C. PQ is the direct common tangent to both the circles touching the circles at point P and point Q. If the radii of the circles are 36 cm and 16 cm, respectively, then the length of PQ is:

- Ans
- ☒ 1. 42 cm
  - ☒ 2. 24 cm
  - ☒ 3. 48 cm
  - ☒ 4. 36 cm

Question ID : 264330148866  
Status : Answered  
Chosen Option : 3

**Q.17** Chords  $\overline{AB}$  and  $\overline{CD}$  of a circle intersect inside the circle at point F. If  $m(\overline{AF}) = 2.4$  cm,  $m(\overline{BF}) = 1.8$  cm, and  $m(\overline{CD}) = 5.7$  cm, what is the length (in cm) of the longer of the two line segments,  $\overline{CF}$  and  $\overline{DF}$ ?

- Ans
- ☒ 1. 4.5
  - ☒ 2. 4.8
  - ☒ 3. 5.4
  - ☒ 4. 3.6

Question ID : 264330146823  
Status : Answered  
Chosen Option : 2

**Q.18** The algebraic expression  $4x^2 - y^2 + 6y - 9$  is equal to \_\_\_\_\_.

- Ans
- ☒ 1.  $(2x + y - 3)(2x - y + 3)$
  - ☒ 2.  $(2x - y - 3)(2x - y + 3)$
  - ☒ 3.  $(2x + y - 3)^2$
  - ☒ 4.  $(2x + y + 3)^2$

Question ID : 264330147878  
Status : Answered  
Chosen Option : 1

**Q.19** A spends 68% of his monthly income. If A's monthly income increases by 25% and his monthly saving increases by 15%, then the percentage increase in his monthly expenditure will be:

Ans

✗ 1.  $27\frac{13}{17}\%$

✓ 2.  $29\frac{12}{17}\%$

✗ 3.  $33\frac{7}{17}\%$

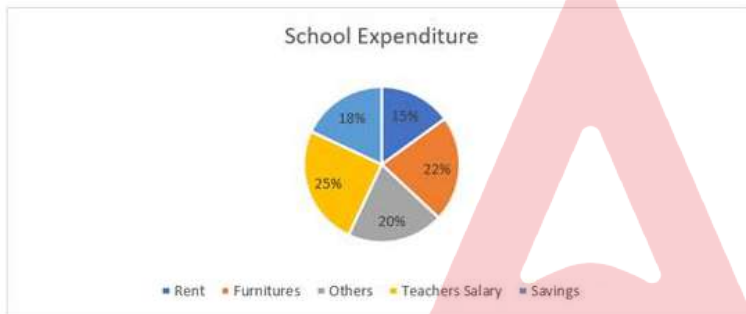
✗ 4.  $31\frac{6}{17}\%$

Question ID : 264330147822

Status : Answered

Chosen Option : 2

**Q.20** The following pie chart shows the percentage distribution of school expenditure.



If the teacher's salary and rent together is ₹45 lakhs, then find the savings.

✗ 1. ₹22,53,000

✗ 2. ₹24,75,000

✗ 3. ₹16,87,500

✓ 4. ₹20,25,000

Question ID : 264330150735

Status : Answered

Chosen Option : 3

**Q.21** If  $\tan A = \frac{1}{2}$  and  $\tan B = \frac{1}{3}$ , then the value of  $A+B$  is:

✗ 1.  $60^\circ$

✗ 2.  $15^\circ$

✗ 3.  $30^\circ$

✓ 4.  $45^\circ$

Question ID : 264330148805

Status : Answered

Chosen Option : 4



**Q.22** A man sells a good at 5% profit. If he had sold it at a 10% profit, he would have received ₹175 more. What is the selling price of the good?

- Ans
- ☒ 1. ₹3,750
  - ☒ 2. ₹3,850
  - ☒ 3. ₹3,675
  - ☒ 4. ₹3,500

Question ID : 264330147621

Status : Answered

Chosen Option : 3

**Q.23** If  $x = (\sqrt{6} - 1)^{\frac{1}{3}}$ , then the value of  $\left(x - \frac{1}{x}\right)^3 + 3\left(x - \frac{1}{x}\right)$  is:

- Ans
- ☒ 1.  $\frac{2\sqrt{6} - 6}{5}$
  - ☒ 2.  $\frac{4\sqrt{6} - 6}{5}$
  - ☒ 3.  $\frac{4\sqrt{6} - 6}{3}$
  - ☒ 4.  $\frac{4\sqrt{3} - 6}{5}$

Question ID : 264330148074

Status : Answered

Chosen Option : 2

**Q.24** X can do a piece of work in 14 days, Y can complete the same work in 28 days and Z can do it in 42 days. In how many days can X, Y and Z together complete the work?

- Ans
- ☒ 1.  $7\frac{9}{11}$
  - ☒ 2.  $7\frac{7}{11}$
  - ☒ 3.  $7\frac{5}{11}$
  - ☒ 4.  $7\frac{3}{11}$

Question ID : 264330148047

Status : Answered

Chosen Option : 2

**Q.25** In what ratio, wheat at ₹23 per kg should be mixed with wheat at ₹14 per kg so that on selling the mixture at ₹20 per kg there is a profit of 25%?

- Ans**
- ☒ 1. 5:7
  - ☒ 2. 3:5
  - ☒ 3. 2:3
  - ☒ 4. 2:7

Question ID : 264330148782  
Status : Answered  
Chosen Option : 4

Section : General Awareness

**Q.1** Indian Navy Sailing Championship 2022, one of the events being conducted by the Indian Navy to commemorate Azadi Ka Amrit Mahotsav and Khelo India, was held in:

- Ans**
- ☒ 1. Andhra Pradesh
  - ☒ 2. West Bengal
  - ☒ 3. Tamil Nadu
  - ☒ 4. Kerala

Question ID : 264330150377  
Status : Not Answered  
Chosen Option : --

**Q.2** Ramesh Bais served as Governor in which of the following states before being appointed as Governor of Maharashtra in 2023?

- Ans**
- ☒ 1. Odisha
  - ☒ 2. Karnataka
  - ☒ 3. Jharkhand
  - ☒ 4. West Bengal

Question ID : 264330146265  
Status : Answered  
Chosen Option : 3

**Q.3** In which year did Niels Bohr propose a theory for the hydrogen atom based on the quantum theory that some physical quantities take only discrete values?

- Ans**
- ☒ 1. 1919
  - ☒ 2. 1921
  - ☒ 3. 1909
  - ☒ 4. 1913

Question ID : 264330145573  
Status : Answered  
Chosen Option : 1

**Q.4** Which d-block element in the periodic table is represented by the Greek symbol 'alpha' and the metallic 'rays'?

- Ans**
- ☒ 1. Lanthanum
  - ☐ 2. Actinium
  - ☐ 3. Rhenium
  - ☐ 4. Tungsten

Question ID : 264330145593  
Status : Not Answered  
Chosen Option : --

**Q.5** Who among the following organised Sarvajanik Ganesh Utsav to inculcate national sentiments among the masses?

- Ans**
- ☒ 1. Lokmanya Tilak
  - ☐ 2. Bipin Chandra Pal
  - ☐ 3. Aurobindo Ghosh
  - ☐ 4. Lala Lajpat Rai

Question ID : 264330148584  
Status : Answered  
Chosen Option : 1

**Q.6** Which event was hosted at Lord's Cricket Ground(LCG) at the 2012 Olympics?

- Ans**
- ☐ 1. Boxing
  - ☐ 2. Cricket
  - ☒ 3. Archery
  - ☐ 4. Equestrian

Question ID : 264330145902  
Status : Answered  
Chosen Option : 4

**Q.7** Which of the following is the compelling factor that produced a very high repayment rate of 98% in the concept of lending to groups of poor women, initiated by Dr Yunus?

- Ans**
- ☐ 1. Involvement of 'loan sharks'
  - ☐ 2. Removal of the defaulter from the group
  - ☒ 3. Joint liability putting social pressure to repay loans
  - ☐ 4. Use of the services of aggressive loan recovery agents

Question ID : 264330144679  
Status : Not Answered  
Chosen Option : --

Q.8 Which of the following forest types is found on the foothills of the Himalayas?

- Ans
- ☐ 1. Temperate
  - ☐ 2. Tundra
  - ☐ 3. Alpine
  - ☒ 4. Deciduous

Question ID : 264330149371  
Status : Answered  
Chosen Option : 2

Q.9 What is the Crude Death Rate of India as per Census 2011?

- Ans
- ☐ 1. 10%
  - ☐ 2. 8.5%
  - ☐ 3. 5.9%
  - ☒ 4. 7.1%

Question ID : 264330150327  
Status : Answered  
Chosen Option : 3

Q.10 Which of the following presents awards and recognitions in the field of Indian dances?

- Ans
- ☐ 1. INTACH
  - ☒ 2. Sangeet Natak Akademi
  - ☐ 3. Sahitya Akademi
  - ☐ 4. Lalit Kala Akademi

Question ID : 264330151254  
Status : Answered  
Chosen Option : 2

Q.11 Who among the following Indian cricketers has won the ICC Emerging Women's cricketer award for the year 2022?

- Ans
- ☐ 1. Smriti Mandhana
  - ☒ 2. Renuka Singh
  - ☐ 3. Harmanpreet Kaur
  - ☐ 4. Jhulan Goswami

Question ID : 264330154808  
Status : Answered  
Chosen Option : 1

Q.12 Alvars were the devotees of which South Indian cult?

- Ans
- ☐ 1. Shaktism
  - ☐ 2. Saivism
  - ☐ 3. Jainism
  - ☒ 4. Vaishnavism

Question ID : 264330148566  
Status : Answered  
Chosen Option : 4

Q.13 The working conditions also include prevention of sexual harassment of working women and making arrangements in the organisation for it, this falls under \_\_\_\_\_.

- Ans
- ☐ 1. Article 44
  - ☒ 2. Article 42
  - ☐ 3. Article 45
  - ☐ 4. Article 43

Question ID : 264330150363  
Status : Answered  
Chosen Option : 4

Q.14 Which of the following is true about the Zaid season in Indian agriculture?

- Ans
- ☒ 1. It follows the Rabi season.
  - ☐ 2. It coincides with southwest monsoon.
  - ☐ 3. It begins with the onset of winter.
  - ☐ 4. It follows the Kharif season.

Question ID : 264330149346  
Status : Answered  
Chosen Option : 2

Q.15 Talat Aziz is primarily a \_\_\_\_\_ singer.

- Ans
- ☐ 1. Hindustani Classical
  - ☐ 2. Carnatic Classical
  - ☒ 3. Ghazal
  - ☐ 4. Folk

Question ID : 264330145790  
Status : Answered  
Chosen Option : 1

Q.16 Tevitchiyattam, Nangai Natakam and Dasiyattam are the forms of which of the following classical dances?

- Ans
- ☐ 1. Odissi dance
  - ☐ 2. Kathakali dance
  - ☐ 3. Sattriya dance
  - ☒ 4. Mohiniyattam dance

Question ID : 264330148638  
Status : Answered  
Chosen Option : 2

Q.17 Which metal ion released from tannery industry causes acute water pollution?

- Ans
- ☐ 1. Mg
  - ☐ 2. As
  - ☒ 3. Cr
  - ☐ 4. Zn

Question ID : 264330145845  
Status : Answered  
Chosen Option : 3

Q.18 The plan that mainly aims to coordinate both, private and public investment and output plans through targets is called \_\_\_\_\_.

- Ans
- ☒ 1. indicative planning
  - ☐ 2. rolling plan
  - ☐ 3. decentralised planning
  - ☐ 4. centralised planning

Question ID : 264330146128  
Status : Answered  
Chosen Option : 1

Q.19 Who among the following Indian Grandmasters defeated the world number one Magnus Carlsen and become the runner up in the FTX Crypto Cup 2022?

- Ans
- ☐ 1. Saket Myneni
  - ☐ 2. Vishwanathan Anand
  - ☒ 3. R Praggnanandhaa
  - ☐ 4. P Harikrishna

Question ID : 264330154824  
Status : Answered  
Chosen Option : 3

**Q.20** In the estimation of national income, which of the following items will be subtracted from NNP at market price?

- Ans**
- ☒ 1. Depreciation
  - ☒ 2. Net product taxes and net production taxes
  - ☒ 3. Net indirect taxes
  - ☒ 4. Depreciation and net product taxes

Question ID : 264330151271  
Status : Answered  
Chosen Option : 1

**Q.21** Which type of surveillance is specifically aimed at identifying missing cases of disease?

- Ans**
- ☒ 1. Overt surveillance
  - ☒ 2. Passive surveillance
  - ☒ 3. Active surveillance
  - ☒ 4. Sentinel surveillance

Question ID : 264330150151  
Status : Answered  
Chosen Option : 3

**Q.22** Which Article of the Indian Constitution protects monuments or a place of artistic or historical interest?

- Ans**
- ☒ 1. Article 48
  - ☒ 2. Article 49
  - ☒ 3. Article 50
  - ☒ 4. Article 51

Question ID : 264330145938  
Status : Answered  
Chosen Option : 4

**Q.23** Identify the correct statement/s with respect to NABARD's EShakti project.

- i. The project aimed to digitise the financial and non-financial data of all the SHGs.
- ii. The project aimed to bring awareness about Digital India among the farmers.
- iii. This project was launched by NABARD in March 2015.

- Ans**
- ☒ 1. Only ii
  - ☒ 2. Only i and iii
  - ☒ 3. Only i and ii
  - ☒ 4. Only ii and iii

Question ID : 264330146109  
Status : Not Answered  
Chosen Option : --



Q.24 Proportional taxes would help to reduce the autonomous expenditure multiplier because \_\_\_\_\_.

- Ans
- ☒ 1. taxes increase the MPC
  - ☒ 2. MPC does not have any role in it
  - ☒ 3. taxes and MPC become equal
  - ☒ 4. taxes reduce the MPC

Question ID : 264330151337  
Status : Answered  
Chosen Option : 3

Q.25 Who was the Chief guest on 26<sup>th</sup> January 2023 Republic Day Parade?

- Ans
- ☒ 1. Cyril Ramaphosa
  - ☒ 2. Shinzo Abe
  - ☒ 3. Jair Bolsonaro
  - ☒ 4. Abdel Fattah El Sisi

Question ID : 264330148658  
Status : Answered  
Chosen Option : 4