

Combined Higher Secondary Level Examination 2023 Tier I

Roll Number	
Candidate Name	
Venue Name	
Exam Date	10/08/2023
Exam Time	9:00 AM - 10:00 AM
Subject	CHSL Exam 2023 Tier I

Section : English Language

Q.1 Select the most appropriate option to fill in the blank.

I can't _____ this heat anymore.

- Ans ☒ 1. beer
☒ 2. bare
☒ 3. bear
☒ 4. bier

Question ID : 264330148957
Status : Answered
Chosen Option : 3

Q.2 Select the most appropriate option that can substitute the underlined segment in the following sentence.

I need to put out my clothes before I leave for work this morning otherwise, I will be restless when I return.

- Ans ☒ 1. need for put out
☒ 2. need to put in
☒ 3. need to put off
☒ 4. need to put away

Question ID : 264330148907
Status : Marked For Review
Chosen Option : 2

Q.3 Select the most appropriate synonym of the given word.

Precise

- Ans ☒ 1. Vague
☒ 2. General
☒ 3. Accurate
☒ 4. Ambiguous

Question ID : 264330144151
Status : Answered
Chosen Option : 3

Test Prime

**ALL EXAMS,
ONE SUBSCRIPTION**



70,000+
Mock Tests



**Personalised
Report Card**



**Unlimited
Re-Attempt**



600+
Exam Covered



**Previous Year
Papers**



500%
Refund



ATTEMPT FREE MOCK NOW

Q.4 Select the most appropriate synonym for the underlined word in the following sentence.

She's so benevolent that she can't even harm a fly, let alone hurting someone.

- Ans
- ☒ 1. Gloomy
 - ☒ 2. Unfortunate
 - ☒ 3. Grudging
 - ☒ 4. Compassionate

Question ID : 264330143942
Status : Answered
Chosen Option : 4

Q.5 Select the most appropriate idiom for the underlined words in the given sentence.

Playing fantasy games on internet is an easy way to make money quickly but it's risky.

- Ans
- ☒ 1. in for a penny in for a pound
 - ☒ 2. not fair and square
 - ☒ 3. making a quick buck
 - ☒ 4. bigger fish to fry

Question ID : 264330144262
Status : Answered
Chosen Option : 3

Q.6 Select the most appropriate synonym of the underlined word in the given sentence.

I am in a difficult predicament as I have two offers at a time.

- Ans
- ☒ 1. Dilemma
 - ☒ 2. Success
 - ☒ 3. Offer
 - ☒ 4. Advantage

Question ID : 264330143214
Status : Answered
Chosen Option : 1

Q.7 Select the option that can be used as a one-word substitute for the given group of words.

The murder of a king

- Ans
- ☒ 1. Sacrilege
 - ☒ 2. Rebel
 - ☒ 3. Reticule
 - ☒ 4. Regicide

Question ID : 264330144109
Status : Answered
Chosen Option : 4

Q.8 Parts of the following sentence have been given as options. Select the option that contains an error.
This region was struck by unusual wave of violence last year.

- Ans** ☒ 1. was struck by unusual
☒ 2. wave of violence
☒ 3. This region
☒ 4. last year.

Question ID : 264330149516
Status : Marked For Review
Chosen Option : 1

Q.9 Parts of the following sentence have been given as options. One of them may contain an error. Select the option that contains the error. If you don't find any error, mark 'No error' as your answer.
With reference of your letter, the organisation wishes to hire you for the security services.

- Ans** ☒ 1. With reference of your letter
☒ 2. for the security services
☒ 3. the organisation wishes to hire you
☒ 4. No error

Question ID : 264330143037
Status : Answered
Chosen Option : 1

Q.10 Select the correct spelling of the underlined word in the given sentence.
Incidently, I happened to bump into my childhood friend at the airport yesterday.

- Ans** ☒ 1. Incidently
☒ 2. Incidentaly
☒ 3. Incidantally
☒ 4. Incidentally

Question ID : 264330143160
Status : Answered
Chosen Option : 2

Q.11 Select the option that expresses the given sentence in passive voice.

The boy will bring the coffee.

- Ans** ☒ 1. The coffee will be brought by the boy.
☒ 2. The coffee will have been brought by the boy.
☒ 3. The coffee would have been brought by the boy.
☒ 4. The coffee must have been brought by the boy.

Question ID : 264330141351
Status : Answered
Chosen Option : 1

Q.12 Select the correctly spelt word.

- Ans ☒ 1. Recommend
☒ 2. Recemmend
☒ 3. Reccommend
☒ 4. Reccomend

Question ID : 264330143952
 Status : Answered
 Chosen Option : 3

Q.13 Select the option that expresses the given sentence in active voice.
 The dog was run over by a truck.

- Ans ☒ 1. A truck had run over the dog.
☒ 2. A truck runs over the dog.
☒ 3. A truck has run over the dog.
☒ 4. A truck ran over the dog.

Question ID : 264330150435
 Status : Answered
 Chosen Option : 4

Q.14 Select the most appropriate synonym of the underlined word.
 Demand for water is also rapidly rising due to population growth, urbanisation and increasing pressures from the agriculture and energy sector.

- Ans ☒ 1. promptly
☒ 2. luxuriously
☒ 3. leisurely
☒ 4. hopefully

Question ID : 264330143650
 Status : Answered
 Chosen Option : 1

Q.15 Parts of a sentence are given below in jumbled order. Select the option that arranges the parts in the correct order to form a meaningful sentence.

- A.By conquest, rather than by economic contract
 B.Other types of feudalism was the relation
 C.The principal difference between Indian and
 D. Between lord and vassal, established in this case

- Ans ☒ 1. B, D, A, C
☒ 2. C, B, D, A
☒ 3. B, A, D, C
☒ 4. C, B, A, D

Question ID : 264330142618
 Status : Answered
 Chosen Option : 2

Q.16 Select the most appropriate idiom for the following statement.

We should be together to fight any danger. Otherwise, separately, we won't be able to fight.

- Ans ☒ 1. Nothing ventured, nothing gained.
☒ 2. A full purse makes the mouth speak.
☒ 3. United we stand, divided we fall.
☒ 4. Well begun is half done.

Question ID : 264330149543
 Status : Answered
 Chosen Option : 3

Q.17 Select the option that can be used as a one-word substitute for the given group of words.

One who is new to some trade or profession

- Ans ☒ 1. Novice
☒ 2. Philistine
☒ 3. Martyr
☒ 4. Omnipresent

Question ID : 264330143202
 Status : Answered
 Chosen Option : 1

Q.18 Parts of a sentence are given below in jumbled order. Arrange the parts in the correct order to form a meaningful sentence.

- A. and he shone like a beacon
 B. but also for the whole world
 C. our country gave birth to a mighty soul
 D. not only for India

- Ans ☒ 1. DBCA
☒ 2. ACDB
☒ 3. CADB
☒ 4. ADBC

Question ID : 264330147572
 Status : Answered
 Chosen Option : 3

Q.19 Select the most appropriate synonym of the underlined word.

The Sustainable Development Goals are a call for action by all countries—poor, rich and middle-income—to promote prosperity while protecting the planet.

- Ans ☒ 1. conceal
☒ 2. holistic
☒ 3. growl
☒ 4. boost

Question ID : 264330143648
 Status : Answered
 Chosen Option : 4

Q.20 Select the most appropriate option that can substitute the underlined segment in the following sentence.

As the storm raged outside, the children huddled together under blankets, listening to the sound of the rain hitting the windows hard and hoping that the power wouldn't go out.

- Ans
- ☐ 1. climbing up to the windows
 - ☐ 2. setting off the windows
 - ☒ 3. pounding against the windows
 - ☐ 4. beating off the windows

Question ID : 264330149589

Status : Answered

Chosen Option : 4

Comprehension:

In the following passage, some words have been deleted. Read the passage carefully and select the most appropriate option to fill in each blank.

Once king Krishnadeva Raya (1)_____ a parrot of which he was excessively fond. He kept it in a silver cage and fed it fruits and nuts and anything else the bird asked for. The parrot longed for freedom and often asked for it, but the king would always reply, "Ask for anything else." One day, the parrot said to the king, "Give me freedom and I'll give you three (2)_____ advice that could be of great benefit to you." The king loved the parrot, but he loved money (3)_____. The parrot said, "Never believe everything that is told to you. What you don't know is that I've two priceless gems in my stomach," said the bird. "Two priceless gems," echoed the king, "Oh, what a fool I was to set you free! I'll regret this for the rest of my life!" I (4)_____ you never to grieve over losses but here you are grieving over losing me," said the parrot, "I advised you never to believe everything you hear, but you immediately believed me when I told you I had two gems in my stomach. (5)_____ I have survived if I really had two gems in my stomach?" My third advice is, "Listen, learn to listen with your mind instead of just with your ears." Saying these words, the parrot flew away.

SubQuestion No : 21

Q.21 Select the most appropriate option to fill in blank number 1.

- Ans
- ☐ 1. has
 - ☒ 2. had
 - ☐ 3. have
 - ☐ 4. will have

Question ID : 264330150464

Status : Answered

Chosen Option : 2

Comprehension:

In the following passage, some words have been deleted. Read the passage carefully and select the most appropriate option to fill in each blank.

Once king Krishnadeva Raya (1)_____ a parrot of which he was excessively fond. He kept it in a silver cage and fed it fruits and nuts and anything else the bird asked for. The parrot longed for freedom and often asked for it, but the king would always reply, "Ask for anything else." One day, the parrot said to the king, "Give me freedom and I'll give you three (2)_____ advice that could be of great benefit to you." The king loved the parrot, but he loved money (3)_____. The parrot said, "Never believe everything that is told to you. What you don't know is that I've two priceless gems in my stomach," said the bird. "Two priceless gems," echoed the king, "Oh, what a fool I was to set you free! I'll regret this for the rest of my life!" I (4)_____ you never to grieve over losses but here you are grieving over losing me," said the parrot, "I advised you never to believe everything you hear, but you immediately believed me when I told you I had two gems in my stomach. (5)_____ I have survived if I really had two gems in my stomach?" My third advice is, "Listen, learn to listen with your mind instead of just with your ears." Saying these words, the parrot flew away.

SubQuestion No : 22

Q.22 Select the most appropriate option to fill in blank number 2.

- Ans ☒ 1. digit of
☒ 2. number of
☒ 3. pieces of
☒ 4. quantity of

Question ID : 264330150465

Status : Answered

Chosen Option : 3

Comprehension:

In the following passage, some words have been deleted. Read the passage carefully and select the most appropriate option to fill in each blank.

Once king Krishnadeva Raya (1)_____ a parrot of which he was excessively fond. He kept it in a silver cage and fed it fruits and nuts and anything else the bird asked for. The parrot longed for freedom and often asked for it, but the king would always reply, "Ask for anything else." One day, the parrot said to the king, "Give me freedom and I'll give you three (2)_____ advice that could be of great benefit to you." The king loved the parrot, but he loved money (3)_____. The parrot said, "Never believe everything that is told to you. What you don't know is that I've two priceless gems in my stomach," said the bird. "Two priceless gems," echoed the king, "Oh, what a fool I was to set you free! I'll regret this for the rest of my life!" I (4)_____ you never to grieve over losses but here you are grieving over losing me," said the parrot, "I advised you never to believe everything you hear, but you immediately believed me when I told you I had two gems in my stomach. (5)_____ I have survived if I really had two gems in my stomach?" My third advice is, "Listen, learn to listen with your mind instead of just with your ears." Saying these words, the parrot flew away.

SubQuestion No : 23

Q.23 Select the most appropriate option to fill in blank number 3.

- Ans ☒ 1. most
☒ 2. better
☒ 3. extra
☒ 4. more

Question ID : 264330150466

Status : Answered

Chosen Option : 4

Comprehension:

In the following passage, some words have been deleted. Read the passage carefully and select the most appropriate option to fill in each blank.

Once king Krishnadeva Raya (1)_____ a parrot of which he was excessively fond. He kept it in a silver cage and fed it fruits and nuts and anything else the bird asked for. The parrot longed for freedom and often asked for it, but the king would always reply, "Ask for anything else." One day, the parrot said to the king, "Give me freedom and I'll give you three (2)_____ advice that could be of great benefit to you." The king loved the parrot, but he loved money (3)_____. The parrot said, "Never believe everything that is told to you. What you don't know is that I've two priceless gems in my stomach," said the bird. "Two priceless gems," echoed the king, "Oh, what a fool I was to set you free! I'll regret this for the rest of my life!" I (4)_____ you never to grieve over losses but here you are grieving over losing me," said the parrot, "I advised you never to believe everything you hear, but you immediately believed me when I told you I had two gems in my stomach. (5)_____ I have survived if I really had two gems in my stomach?" My third advice is, "Listen, learn to listen with your mind instead of just with your ears." Saying these words, the parrot flew away.

SubQuestion No : 24

Q.24 Select the most appropriate option to fill in blank number 4.

- Ans ☒ 1. have advised
☒ 2. advised
☒ 3. advise
☒ 4. did advised

Question ID : 264330150467

Status : Answered

Chosen Option : 1

Comprehension:

In the following passage, some words have been deleted. Read the passage carefully and select the most appropriate option to fill in each blank.

Once king Krishnadeva Raya (1)_____ a parrot of which he was excessively fond. He kept it in a silver cage and fed it fruits and nuts and anything else the bird asked for. The parrot longed for freedom and often asked for it, but the king would always reply, "Ask for anything else." One day, the parrot said to the king, "Give me freedom and I'll give you three (2)_____ advice that could be of great benefit to you." The king loved the parrot, but he loved money (3)_____. The parrot said, "Never believe everything that is told to you. What you don't know is that I've two priceless gems in my stomach," said the bird. "Two priceless gems," echoed the king, "Oh, what a fool I was to set you free! I'll regret this for the rest of my life!" I (4)_____ you never to grieve over losses but here you are grieving over losing me," said the parrot, "I advised you never to believe everything you hear, but you immediately believed me when I told you I had two gems in my stomach. (5)_____ I have survived if I really had two gems in my stomach?" My third advice is, "Listen, learn to listen with your mind instead of just with your ears." Saying these words, the parrot flew away.

SubQuestion No : 25

Q.25 Select the most appropriate option to fill in blank number 5.

- Ans ☒ 1. Can
☒ 2. May
☒ 3. Might
☒ 4. Could

Question ID : 264330150468

Status : Answered

Chosen Option : 4

Section : General Intelligence

Q.1 K is the daughter of S. S is married to G. A is the only grandson of M. G is the son of M. A has one daughter H, who is the only granddaughter of S. How is K related to A?

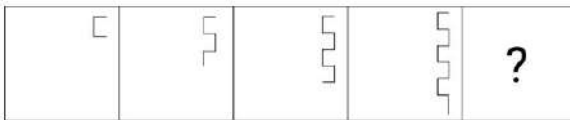
- Ans**
- ✓ 1. Sister
 - ✗ 2. Mother's mother
 - ✗ 3. Daughter
 - ✗ 4. Mother's sister

Question ID : 264330147293

Status : Answered

Chosen Option : 1

Q.2 Identify the figure given in the options which when put in place of the question mark (?) will logically complete the series.



Ans

- ✗ 1.
- ✗ 2.
- ✓ 3.
- ✗ 4.

Question ID : 264330147240

Status : Answered

Chosen Option : 3

Q.3 In the following number-pairs, the second number is obtained by applying certain mathematical operations to the first number. Select the set in which the numbers are related in the same way as are the numbers of the following sets.
(NOTE: Operations should be performed on the whole numbers, without breaking down the numbers into its constituent digits. E.g. 13 – Operations on 13 such as adding / subtracting / multiplying etc. to 13 can be performed. Breaking down 13 into 1 and 3 and then performing mathematical operations on 1 and 3 is not allowed.)

(11, 122)

(32, 1025)

- Ans**
- ☒ 1. (25, 152)
 - ☒ 2. (21, 441)
 - ☒ 3. (13, 170)
 - ☒ 4. (17, 292)

Question ID : 264330147008

Status : Answered

Chosen Option : 3

Q.4 Read the given statements and conclusions carefully. You have to take the given statements to be true even if they seem to be at variance from commonly known facts. You have to decide which conclusions logically follow/s from the given statements.

Statements:

All summers are hot.

Some hot is water.

No water is ice.

Conclusions:

(I): Some hot is summer.

(II): No ice is water.

- Ans**
- ☒ 1. Only conclusion (II) follows
 - ☒ 2. Neither conclusion (I) nor (II) follows
 - ☒ 3. Only conclusion (I) follows
 - ☒ 4. Both conclusions (I) and (II) follow

Question ID : 264330152114

Status : Answered

Chosen Option : 4

Q.5 Select the option in which the numbers share the same relationship as that shared by the given pair of numbers.

3 : 83

7 : 2403

(NOTE : Operations should be performed on the whole numbers, without breaking down the numbers into its constituent digits. E.g. 13 – Operations on 13 such as adding / subtracting / multiplying etc. to 13 can be performed. Breaking down 13 into 1 and 3 and then performing mathematical operations on 1 and 3 is not allowed.)

- Ans**
- ☒ 1. 5 : 629
 - ☒ 2. 6 : 1200
 - ☒ 3. 2 : 18
 - ☒ 4. 4 : 250

Question ID : 264330150866

Status : Answered

Chosen Option : 3

Q.6 Select the number from among the given options that can replace the question mark (?) in the following series.

-4, -1, 4, ?, 20, 31, 44

- Ans**
- ☒ 1. 15
 - ☒ 2. 17
 - ☒ 3. 11
 - ☒ 4. 18

Question ID : 264330147474

Status : Answered

Chosen Option : 3

Q.7 Four triads of numbers have been given out of which three are alike in some manner and one is different. Select the one that is different.

(NOTE : Operations should be performed on the whole numbers, without breaking down the numbers into its constituent digits. E.g. 13 – Operations on 13 such as adding / subtracting /multiplying etc. to 13 can be performed. Breaking down 13 into 1 and 3 and then performing mathematical operations on 1 and 3 is not allowed.)

- Ans**
- ☒ 1. 19 – 37 – 73
 - ☒ 2. 14 – 29 – 59
 - ☒ 3. 23 – 47 – 95
 - ☒ 4. 3 – 7 – 15

Question ID : 264330152445

Status : Answered

Chosen Option : 1

Q.8 Select the pair of letter-clusters which follows the same pattern as that followed by the two sets of pair of letter-clusters given below. Both pairs of letter-clusters follow the same pattern.

ADK : FIP

LPQ : QUV

- Ans**
- ☒ 1. MOR : RTW
 - ☒ 2. JKL : LKJ
 - ☒ 3. GHM : KNQ
 - ☒ 4. PQT : QTP

Question ID : 264330147117

Status : Answered

Chosen Option : 1

Q.9 In a certain code language, 'TECH' is coded as '6439' and 'CHEW' is coded as '4163'. What is the code for 'T' in the given code language?

- Ans**
- ☒ 1. 3
 - ☒ 2. 4
 - ☒ 3. 9
 - ☒ 4. 6

Question ID : 264330146581

Status : Answered

Chosen Option : 3

Q.10 What should come in place of the question mark (?) in the given series?

117, 102, ?, 57, 27

- Ans
- ☒ 1. 82
 - ☐ 2. 88
 - ☐ 3. 73
 - ☐ 4. 97

Question ID : 264330147437
Status : Answered
Chosen Option : 1

Q.11 Select the word-pair that does NOT represent a similar relationship to the one expressed in the pair of words given below.
(The words must be considered as meaningful English words and must not be related to each other based on the number of letters/number of consonants/vowels in the word.)
Scatter : Combine

- Ans
- ☐ 1. Sorrow : Cheer
 - ☒ 2. Diminish : Shrink
 - ☐ 3. Serious : Insincere
 - ☐ 4. Lofty : Low

Question ID : 264330150896
Status : Answered
Chosen Option : 2

Q.12 Each of the letters in the word CAREFUL are arranged in alphabetical order. How many letters are there in the English alphabetical series between the letter that is second from the left and the one that is fourth from the right in the new letter-cluster thus formed?

- Ans
- ☐ 1. Four
 - ☐ 2. Three
 - ☐ 3. Six
 - ☒ 4. Two

Question ID : 264330146884
Status : Answered
Chosen Option : 2

Q.13 The position of how many letters will remain unchanged if each of the letters in the word SECTION is arranged in alphabetical order?

- Ans
- ☐ 1. none
 - ☐ 2. Two
 - ☐ 3. Three
 - ☒ 4. One

Question ID : 264330147167
Status : Answered
Chosen Option : 4

Q.14 Three of the following number triads are alike in some manner and one is different. Select the odd number triad.

(NOTE: The second and third numbers in the given number triads are formed by performing a certain operation on the first number. The same operation is followed in all the number triads except one. Find that odd number triads.)

- Ans**
- ☒ 1. 20 : 400 : 200
 - ☒ 2. 9 : 81 : 45
 - ☒ 3. 13 : 169 : 84.5
 - ☒ 4. 25 : 625 : 312.5

Question ID : 264330150873
Status : Answered
Chosen Option : 2

Q.15 ILMK is related to ORSQ in a certain way based on the English alphabetical order. In the same way, FIJH is related to LOPN. To which of the following is TWXV related to, following the same logic?

- Ans**
- ☒ 1. ACDB
 - ☒ 2. ZEFD
 - ☒ 3. ZCDB
 - ☒ 4. AEFD

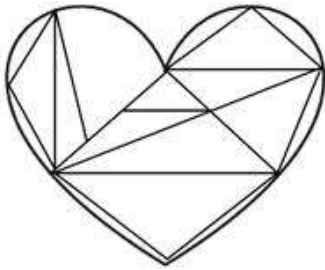
Question ID : 264330147309
Status : Answered
Chosen Option : 3

Q.16 In a certain code language , 'ABCDE' is coded as '45' and 'OPQR' is coded as '198'. What will be the code for 'XYZ' in the given code language ?

- Ans**
- ☒ 1. 215
 - ☒ 2. 239
 - ☒ 3. 219
 - ☒ 4. 225

Question ID : 264330147498
Status : Answered
Chosen Option : 4

Q.17 How many triangles are there in the given figure?



- Ans
- ✓ 1. 14
 - ✗ 2. 15
 - ✗ 3. 16
 - ✗ 4. 13

Question ID : 264330146924
Status : Marked For Review
Chosen Option : 2

Q.18 Select the combination of letters that when sequentially placed in the blanks of the given series will complete the series.

AB_Z C_WX _FUV GH_T I_QR

- Ans
- ✗ 1. CDEIP
 - ✗ 2. YDEIP
 - ✗ 3. CDESJ
 - ✓ 4. YDESJ

Question ID : 264330146866
Status : Answered
Chosen Option : 4

Q.19 What will come in the place of the question mark (?) in the following equation if '+' and '-' are interchanged and 'x' and '÷' are interchanged?

$$49 \times 7 \div 13 - 87 + 12 = ?$$

- Ans
- ✗ 1. 167
 - ✓ 2. 166
 - ✗ 3. 159
 - ✗ 4. 171

Question ID : 264330146414
Status : Answered
Chosen Option : 2

Q.20 Three of the following four are alike in a certain way and thus form a group. Which is the one that does NOT belong to that group?

- Ans**
- ☒ 1. RUY
 - ☒ 2. GJN
 - ☒ 3. BEI
 - ☒ 4. NQV

Question ID : 264330151969
Status : Answered
Chosen Option : 4

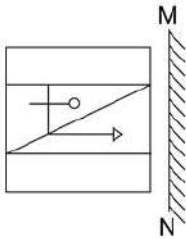
Q.21 Select the correct mirror image of the given figure when the mirror is placed at MN as shown below.

y U P f 4 2
M
N

- Ans**
- ☒ 1. 5 P f 9 U y
 - ☒ 2. 5 4 f P U y
 - ☒ 3. 5 P f 9 U 2
 - ☒ 4. 5 P f 9 U y

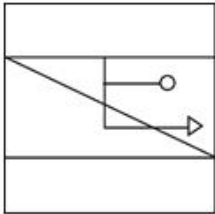
Question ID : 264330146710
Status : Answered
Chosen Option : 4

Q.22 Select the correct mirror image of the given figure when the mirror is placed at MN as shown.

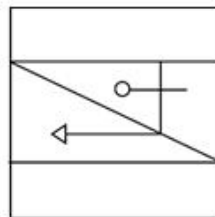


Ans

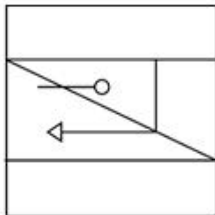
✗ 1.



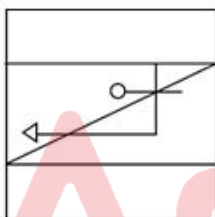
✓ 2.



✗ 3.



✗ 4.



Question ID : 264330146486

Status : Answered

Chosen Option : 2

Q.23 Select the letter-cluster from among the given options that can replace the question mark (?) in the following series.

ENQR, CPOT, ?, YTKX

Ans

✗ 1. BSNW

✗ 2. ANMR

✗ 3. EROV

✓ 4. ARMV

Question ID : 264330147045

Status : Answered

Chosen Option : 4

Q.24 If 'A' stands for '+', 'B' stands for '×', 'C' stands for '+' and 'D' stands for '-', what will come in place of the question mark (?) in the following equation?

$$153 \text{ C } 65 \text{ A } 13 \text{ B } 6 \text{ D } 85 = ?$$

- Ans**
- ☒ 1. 101
 - ☒ 2. 96
 - ☒ 3. 98
 - ☒ 4. 91

Question ID : 264330146419
Status : Answered
Chosen Option : 3

Q.25 In a certain code language,

A + B means 'A is the mother of B'

A - B means 'A is the husband of B'

A × B means 'A is the father of B'

A ÷ B means 'A is the brother of B'

Based on the above, how is T related to X if 'T × U - V + W ÷ X'?

- Ans**
- ☒ 1. Mother's father
 - ☒ 2. Brother
 - ☒ 3. Father
 - ☒ 4. Father's father

Question ID : 264330152004
Status : Answered
Chosen Option : 4

Section : Quantitative Aptitude

Q.1 If $\sin A = \frac{3}{5}$, calculate the value of $\cos A + \tan A - 1$.

- Ans**
- ☒ 1. $\frac{21}{20}$
 - ☒ 2. $\frac{11}{20}$
 - ☒ 3. $\frac{13}{20}$
 - ☒ 4. 2

Question ID : 264330151132
Status : Answered
Chosen Option : 2

Q.2 If $4 \sin^2 A - 3 = 0$ and $0 \leq A \leq 90^\circ$, then $3 \sin A - 4 \sin^3 A$ is:

Ans

☐ 1. $\frac{1}{2}$

☐ 2. $\sqrt{\frac{3}{2}}$

☒ 3. 0

☐ 4. 1

Question ID : 264330148180

Status : Answered

Chosen Option : 3

Q.3 Table shows the annual income of 5 schools (in lakhs rupees).

SOURCE OF INCOME	SCHOOLS				
	P	Q	R	S	T
DONATION	140	250	200	300	220
TUITION FEES	280	310	340	200	200
GRANTS	110	110	120	125	130
EXAM FEES	102	104	110	120	130
MISC	160	180	190	200	250

Which school has the highest percentage of income from donations out of its total income?

Ans

☐ 1. Q

☐ 2. P

☒ 3. S

☐ 4. R

Question ID : 264330150759

Status : Marked For Review

Chosen Option : 3

Q.4 A motorboat, whose speed is 20 km/h in still water takes 3 hours to cover a distance of 22.5 km upstream and then comes back to its starting point. The speed of the stream (in km/h) is:

Ans

☒ 1. 10

☐ 2. 9

☐ 3. 8

☐ 4. 11

Question ID : 264330150663

Status : Answered

Chosen Option : 1

Q.5 A person sold two items selling each for ₹42,600. On the first item, he made a loss of 25%, while on the second, he gained 20%. Find his overall percentage gain or loss, giving your answer correct to one place of decimal.

- Ans**
- ☒ 1. 7.7% gain
 - ☒ 2. 7.7% loss
 - ☒ 3. 8.3% loss
 - ☒ 4. 8.2% loss

Question ID : 264330146783
Status : Answered
Chosen Option : 2

Q.6 A man invested ₹4,500 at 5% per annum and ₹5,500 at 8% per annum simple interest. Both investments were for 4 years each. The amount received from the lower rate of interest is what per cent (rounded off to the nearest integer) of the amount received from the higher rate of interest?

- Ans**
- ☒ 1. 63%
 - ☒ 2. 74%
 - ☒ 3. 51%
 - ☒ 4. 48%

Question ID : 264330151406
Status : Answered
Chosen Option : 2

Q.7 In a circle with radius 20 cm, X is a point located at a distance of y cm from the centre of the circle. If the length of a tangent drawn from point X to the circle is 21 cm, find the value of y.

- Ans**
- ☒ 1. 31
 - ☒ 2. 28
 - ☒ 3. 29
 - ☒ 4. 25

Question ID : 264330146821
Status : Answered
Chosen Option : 3

Q.8 If $x^2 + \frac{1}{x^2} = 29$, then find the value of $x - \frac{1}{x}$.

- Ans**
- ☒ 1. ± 4
 - ☒ 2. $\pm 3\sqrt{3}$
 - ☒ 3. ± 3
 - ☒ 4. $\pm 4\sqrt{3}$

Question ID : 264330147986
Status : Answered
Chosen Option : 2

Q.9 The production of three products by three companies is given below in the table.

Company → Product ↓	1	2	3
A	25	35	10
B	30	15	20
C	20	20	40

Which of the following gives maximum production of a product by any company?

- Ans
- ✓ 1. Product C, Company 3
 - ✗ 2. Product B, Company 1
 - ✗ 3. Product A, Company 3
 - ✗ 4. Product A, Company 2

Question ID : 264330150603
Status : Answered
Chosen Option : 4

Q.10 Find the volume of a solid sphere whose diameter is 42 cm. (Use $\pi = \frac{22}{7}$)

- Ans
- ✗ 1. 38807 cm³
 - ✓ 2. 38808 cm³
 - ✗ 3. 38806 cm³
 - ✗ 4. 38805 cm³

Question ID : 264330149450
Status : Answered
Chosen Option : 2

Q.11 If the difference between the simple interest and the compound interest for 3 years at the rate of 10% per annum on a certain sum is equal to ₹310, then that sum of money is:

- Ans
- ✗ 1. ₹8,000
 - ✗ 2. ₹9,500
 - ✗ 3. ₹12,000
 - ✓ 4. ₹10,000

Question ID : 264330147932
Status : Answered
Chosen Option : 4

Q.12 8 cm and 5 cm are the radii of two circles. If the distance between the centres of the two circles is 11 cm, then the length (in cm) of the common tangent of two circles is:

- Ans
- ☒ 1. $2\sqrt{7}$
 - ☒ 2. $3\sqrt{7}$
 - ☒ 3. $\sqrt{7}$
 - ☒ 4. $4\sqrt{7}$

Question ID : 264330148056
Status : Answered
Chosen Option : 4

Q.13 Simplify the given expression. $\frac{(80 \times 80 \times 80) + (70 \times 70 \times 70) + (50 \times 50 \times 50) - 840000}{6400 + 4900 + 2500 - 5600 - 3500 - 4000}$

- Ans
- ☒ 1. 100
 - ☒ 2. 200
 - ☒ 3. 400
 - ☒ 4. 300

Question ID : 264330147956
Status : Answered
Chosen Option : 2

Q.14 In a circle with centre O and diameter EF, if the two chords AE = AF, then $\angle AEF$ is:

- Ans
- ☒ 1. 80°
 - ☒ 2. 90°
 - ☒ 3. 45°
 - ☒ 4. 60°

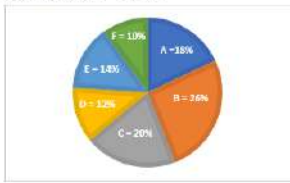
Question ID : 264330148765
Status : Answered
Chosen Option : 3

Q.15 The population of a village in 2019 was 30,000. The increase in population rate was 15% and 25%, respectively, from the year 2019 to 2020 and 2020 to 2021. What was the population in the year 2021?

- Ans
- ☒ 1. 42,000
 - ☒ 2. 42,325
 - ☒ 3. 42,523
 - ☒ 4. 43,125

Question ID : 264330147618
Status : Answered
Chosen Option : 4

- Q.16** The Pie chart shows the percentage distributions of total number of laptops (both Dell and HP) sold by six stores in March.
Refer to the pie chart and table carefully and answer the given questions.
Total number = 11200



Ratio of the numbers of Dell and HP sold	
Stores	Ratio
A	5 : 4
B	7 : 6
C	1 : 4
D	11 : 10
E	4 : 3
F	3 : 1

The number of Dell laptops sold by store B is what per cent more than that of HP laptops sold by stores E and F? (correct to two decimal places)

- Ans
- ☒ 1. 70.43%
 - ☒ 2. 27.64%
 - ☒ 3. 57.64%
 - ☒ 4. 64.70%

Question ID : 264330150788
Status : Not Answered
Chosen Option : --

- Q.17** The mean proportion of number 0.049 and 0.9 is:

- Ans
- ☒ 1. 0.021
 - ☒ 2. 0.21
 - ☒ 3. 0.63
 - ☒ 4. 21

Question ID : 264330148262
Status : Answered
Chosen Option : 2

- Q.18** A 45% profit is made when a discount of 45% is given on the marked price of an item. If the discount on the marked price of the same item is 50%, then the profit will be:

- Ans
- ☒ 1. $31\frac{9}{11}\%$
 - ☒ 2. $33\frac{2}{11}\%$
 - ☒ 3. $30\frac{7}{11}\%$
 - ☒ 4. $31\frac{7}{11}\%$

Question ID : 264330148001
Status : Marked For Review
Chosen Option : 1

Q.19 Simplify the given expression.

$$40 \times 7 - 2 \times (11^3 \div 11) \div 22 + 30$$

- Ans
- ☒ 1. 297
 - ☒ 2. 298
 - ☒ 3. 300
 - ☒ 4. 299

Question ID : 264330147881

Status : Answered

Chosen Option : 4

Q.20 M is the mid-point of side QR of a parallelogram PQRS (P being on the top left hand, followed by other points going clockwise). The line SM is drawn intersecting PQ produced at T. What is the length (in terms of the length of SR) of PT?

- Ans
- ☒ 1. $\frac{3SR}{2}$
 - ☒ 2. $\frac{SR}{2}$
 - ☒ 3. 2SR
 - ☒ 4. SR

Question ID : 264330149990

Status : Not Answered

Chosen Option : --

Q.21 In a mixture of 178 litres, the ratio of water and milk is 5:7. How much water should be added to make the ratio of water and milk 3:4?

- Ans
- ☒ 1. $3\frac{17}{24}$ litres
 - ☒ 2. $3\frac{13}{24}$ litres
 - ☒ 3. $2\frac{11}{24}$ litres
 - ☒ 4. $2\frac{23}{24}$ litres

Question ID : 264330148781

Status : Not Answered

Chosen Option : --

Q.22 Dileep purchases 90 articles for ₹13,230 and sells them at a loss equal to the selling price of 8 articles. What will be the selling price of one article?

- Ans
- ☒ 1. ₹120
 - ☒ 2. ₹135
 - ☒ 3. ₹130
 - ☒ 4. ₹125

Question ID : 264330149435

Status : Answered

Chosen Option : 2

Q.23 If $\sin A = \frac{2}{5}$, where A is an acute angle, what is the value of $\frac{5 \sin A + 2 \operatorname{cosec} A}{\sqrt{21} \sec A}$?

Ans

✗ 1. $\frac{5}{4}$

✓ 2. $\frac{7}{5}$

✗ 3. $\frac{4}{5}$

✗ 4. $\frac{5}{7}$

Question ID : 264330149994

Status : Answered

Chosen Option : 2

Q.24 Simplify $(3x + 2y)^2 - (3x - 2y)^2$.

Ans

✗ 1. $12xy$

✗ 2. $18x^2 - 8y^2$

✓ 3. $24xy$

✗ 4. $9x^2 - 4y^2$

Question ID : 264330147652

Status : Answered

Chosen Option : 3

Q.25 If a man completed a work in 10 days and the same work was completed by a woman in 8 days. How many days will it take to complete if they work together?

Ans

✗ 1. $\frac{38}{8}$

✗ 2. $\frac{40}{7}$

✓ 3. $\frac{40}{9}$

✗ 4. $\frac{42}{9}$

Question ID : 264330148170

Status : Answered

Chosen Option : 3

Section : General Awareness

Q.1 The Indian National Science Academy is situated in _____.

- Ans ☒ 1. New Delhi
☐ 2. Hyderabad
☐ 3. Allahabad
☐ 4. Bangaluru

Question ID : 264330150386
Status : Answered
Chosen Option : 1

Q.2 'The state shall endeavour to secure to all workers a living wage and a decent standard of life'. Which of the following is correct about the given statement in the context of India?

- Ans ☒ 1. It is mentioned in the 43rd Article of the Constitution.
☐ 2. It is mentioned in the 44th Article of Constitution.
☐ 3. This is a Gandhian principle of Directive Principles of State Policy.
☐ 4. This is a liberal principle of Directive Principles of State Policy.

Question ID : 264330145941
Status : Marked For Review
Chosen Option : 4

Q.3 Which of the following statements is true regarding the Indian monsoon and the Inter Tropical Convergence Zone (ITCZ)?

- Ans ☒ 1. The shift in the position of the ITCZ can influence the monsoon patterns in India.
☐ 2. ITCZ is located in the Indo-Gangetic plains during February.
☐ 3. The ITCZ is a phenomenon that occurs only during winter.
☐ 4. The ITCZ has no impact on the Indian monsoon.

Question ID : 264330150248
Status : Answered
Chosen Option : 1

Q.4 Which country first introduced zero-based budgeting?

- Ans ☐ 1. India
☐ 2. Germany
☒ 3. The US
☐ 4. The UK

Question ID : 264330146106
Status : Not Answered
Chosen Option : --

Q.5 The famous Rath Yatra, Car Festival is associated with which Lord?

- Ans
- ☒ 1. Lord Shiva
 - ☒ 2. Lord Jagannath
 - ☒ 3. Lord Indra
 - ☒ 4. Lord Brahma

Question ID : 264330144767
Status : Answered
Chosen Option : 2

Q.6 Which of the following is the main advantage of the import substitution policy?

- Ans
- ☒ 1. It may make the indigenous industries more competitive.
 - ☒ 2. It will help the consumers by providing them with unlimited choices.
 - ☒ 3. It helps the nation achieve self-reliance.
 - ☒ 4. It led to optimum allocation of resources.

Question ID : 264330146134
Status : Answered
Chosen Option : 3

Q.7 Who among the following Vijaynagar rulers married his daughter to Firuz Shah Bahmani?

- Ans
- ☒ 1. Deva Raya II
 - ☒ 2. Deva Raya I
 - ☒ 3. Krishna Deva Raya
 - ☒ 4. Bukka I

Question ID : 264330148569
Status : Marked For Review
Chosen Option : 1

Q.8 What is the most stable mineral during the process of weathering?

- Ans
- ☒ 1. Quartz
 - ☒ 2. Olivine
 - ☒ 3. Pyroxene
 - ☒ 4. Amphibole

Question ID : 264330144485
Status : Not Answered
Chosen Option : --

Q.9 Which project aims to develop state roads along coastal border areas, including connectivity of non-major ports?

- Ans**
- ☐ 1. Golden Quadrilateral
 - ☐ 2. Setubharatam Pariyojana
 - ☐ 3. District Headquarters Connectivity Scheme
 - ☒ 4. Bharatmala

Question ID : 264330149354
Status : Answered
Chosen Option : 4

Q.10 As per the newly released Surrogacy Rules 2022, surrogacy couples must purchase health insurance coverage for the surrogate mother for a period of _____.

- Ans**
- ☒ 1. three years
 - ☐ 2. four years
 - ☐ 3. one year
 - ☐ 4. six years

Question ID : 264330150055
Status : Answered
Chosen Option : 1

Q.11 In which year did India make its One-Day International (ODI) debut?

- Ans**
- ☐ 1. 1971
 - ☒ 2. 1974
 - ☐ 3. 1975
 - ☐ 4. 1972

Question ID : 264330145910
Status : Answered
Chosen Option : 2

Q.12 Which of the following institution has been accredited as National Implementing Entity for Adaptation Fund under United Nations Framework Convention on Climate Change (UNFCCC) in India?

- Ans**
- ☐ 1. ICAR
 - ☐ 2. NIRD
 - ☒ 3. NABARD
 - ☐ 4. RBI

Question ID : 264330145876
Status : Not Answered
Chosen Option : --

Q.13 The decadal growth rate of India's population as per Census 2011 is _____.

- Ans
- ☒ 1. 17.02%
 - ☒ 2. 16.54%
 - ☒ 3. 17.64%
 - ☒ 4. 15.65%

Question ID : 264330150323
Status : Not Answered
Chosen Option : --

Q.14 Which natural bioactive water-soluble phenolic compound is present in Fruits, vegetables and grains with red, purple, blue or black hues?

- Ans
- ☒ 1. Coumarins
 - ☒ 2. Anthocyanins
 - ☒ 3. Quercetin
 - ☒ 4. Naringenin

Question ID : 264330145629
Status : Not Answered
Chosen Option : --

Q.15 Which of the following statements is/are correct with respect to income or output?

- i. Income or output are flows.
- ii. Income or output are stocks.
- iii. Income or output can be defined over a period.

- Ans
- ☒ 1. Only i and iii
 - ☒ 2. Only ii and iii
 - ☒ 3. Only i
 - ☒ 4. Only i and ii

Question ID : 264330146120
Status : Answered
Chosen Option : 1

Q.16 Which of these expressions is correct?

Ans ☒ 1.

If the factor income from abroad is greater than the factor income paid abroad, then GNP would be greater than GDP.

☒ 2.

If the factor income from abroad is greater than the factor income paid abroad, then GNP would be lower than GDP.

☒ 3.

If the factor income earned from abroad is less than the factor income paid abroad, then GNP would be greater than GDP.

☒ 4.

If the net factor income from abroad is negative, then GNP would be greater than GDP.

Question ID : 264330144705

Status : Answered

Chosen Option : 1

Q.17 Unit of frequency is _____.

Ans ☒ 1. hertz

☒ 2. sec

☒ 3. gm

☒ 4. cm

Question ID : 264330145817

Status : Answered

Chosen Option : 1

Q.18 Hariprasad Chaurasia plays which of the following musical instruments?

Ans ☒ 1. Flute

☒ 2. Trumpet

☒ 3. Tabla

☒ 4. Drum

Question ID : 264330148675

Status : Answered

Chosen Option : 1

Q.19 Heating ethanol with excess concentrated sulphuric acid produces:

Ans ☒ 1. ethane

☒ 2. ethyne

☒ 3. butane

☒ 4. ethene

Question ID : 264330145821

Status : Marked For Review

Chosen Option : 1

Q.20 Who is referred to as 'Frontier Gandhi'?

- Ans
- ☒ 1. Rajendra Prasad
 - ☒ 2. Khan Abdul Gaffar Khan
 - ☒ 3. Ashfaqullah Khan
 - ☒ 4. Rajkumar Shukla

Question ID : 264330150233
Status : Answered
Chosen Option : 2

Q.21 India won _____ medals in the International Shooting Sport Federation (ISSF)'s world cup 2022, which was held in Cairo, Egypt.

- Ans
- ☒ 1. 5
 - ☒ 2. 8
 - ☒ 3. 7
 - ☒ 4. 6

Question ID : 264330154822
Status : Not Answered
Chosen Option : --

Q.22 Who among the following Indian shooters won the gold at the International Shooting Sport Federation's President's cup 2022?

- Ans
- ☒ 1. Arjun Babuta
 - ☒ 2. Rudrankksh Patil
 - ☒ 3. Anjum Moudgil
 - ☒ 4. Ankur Mittal

Question ID : 264330154814
Status : Not Answered
Chosen Option : --

Q.23 Who among the following personalities won the Sangeet Natak Akademi Award 2021 for contribution to Manipuri Dance?

- Ans
- ☒ 1. Bhuvan Kumar
 - ☒ 2. Thokchom Ibemubi Devi
 - ☒ 3. Sruti Bandopadhyay
 - ☒ 4. Kumkum Dhar

Question ID : 264330145805
Status : Not Answered
Chosen Option : --

Q.24 Liberty, Equality and Fraternity slogan of _____ finds an echo in the Preamble of Indian Constitution.

- Ans**
- ☒ 1. Mexican Revolution
 - ☒ 2. Greek War of Independence
 - ☒ 3. American Declaration of Independence
 - ☒ 4. French Revolution

Question ID : 264330145736
Status : Answered
Chosen Option : 4

Q.25 Which of the following dance forms originating in Kerala, is a solo recital by women?

- Ans**
- ☒ 1. Mohiniyattam
 - ☒ 2. Odissi
 - ☒ 3. Kathakali
 - ☒ 4. Kuchipudi

Question ID : 264330145753
Status : Answered
Chosen Option : 1