

Combined Higher Secondary Level Examination 2023 Tier I

Roll Number	
Candidate Name	
Venue Name	
Exam Date	17/08/2023
Exam Time	9:00 AM - 10:00 AM
Subject	CHSL Exam 2023 Tier I

Section : English Language

Q.1 Select the most appropriate idiom for the underlined segment in the given sentence.

When he made fun of the sage, who was already infuriated, it made a bad situation worse.

- Ans**
- ☒ 1. Made them at the loggerheads
 - ☒ 2. Pulled someone's legs
 - ☒ 3. Added fuel to the fire
 - ☒ 4. Budged up

Question ID : 264330144363
Status : Answered
Chosen Option : 3

Q.2 Select the most appropriate synonym of the given word.

Quell

- Ans**
- ☒ 1. Invite
 - ☒ 2. Beseech
 - ☒ 3. Encourage
 - ☒ 4. Suppress

Question ID : 264330143170
Status : Answered
Chosen Option : 4

Q.3 Select the most appropriate idiom for the following sentence.
The recent strike of the employees left the factory and its machinery in disorder.

- Ans**
- ☒ 1. Need of the hour
 - ☒ 2. Out of gear
 - ☒ 3. Pin-money
 - ☒ 4. Lock and key

Question ID : 264330141306
Status : Answered
Chosen Option : 2

Test Prime

**ALL EXAMS,
ONE SUBSCRIPTION**



70,000+
Mock Tests



**Personalised
Report Card**



**Unlimited
Re-Attempt**



600+
Exam Covered



**Previous Year
Papers**



**500%
Refund**



ATTEMPT FREE MOCK NOW

Q.4 Select the option that can be used as a one-word substitute for the underlined group of words.

'A Red, Red Rose' by Robert Burns is a poem that tells a story and has a regular rhythm and rhyme scheme.

- Ans
- ☒ 1. epic
 - ☒ 2. haiku
 - ☒ 3. ballad
 - ☒ 4. sonnet

Question ID : 264330144149
Status : Answered
Chosen Option : 3

Q.5 Select the most appropriate homonym to fill in the blank.
Should we go shopping for a ____ fan for our new house?

- Ans
- ☒ 1. ceiling
 - ☒ 2. sealink
 - ☒ 3. sealing
 - ☒ 4. selling

Question ID : 264330149757
Status : Answered
Chosen Option : 1

Q.6 The following sentence has been divided into parts. One of them may contain an error.
Select the part that contains the error from the given options. If you don't find any error, mark 'No error' as your answer.

A crocodile / was swimming / in a river.

- Ans
- ☒ 1. A crocodile
 - ☒ 2. was swimming
 - ☒ 3. No error
 - ☒ 4. in a river

Question ID : 264330149606
Status : Answered
Chosen Option : 3

Q.7 Select the most appropriate option that can substitute the underlined segment in the given sentence.

The performance of the musicians was rather worst than expected by the audience.

- Ans
- ☒ 1. worst than expectation
 - ☒ 2. worse was expected
 - ☒ 3. worse than expected
 - ☒ 4. bad as expected

Question ID : 264330144097
Status : Answered
Chosen Option : 4

Q.8 Select the most appropriate synonym of the given word from the following sentence.

Damage

Every war in the history originates because of the greed of the rulers which was satisfied after mass destruction.

- Ans**
- ☒ 1. Satisfied
 - ☒ 2. Destruction
 - ☒ 3. Greed
 - ☒ 4. Originates

Question ID : 264330149542
Status : Answered
Chosen Option : 2

Q.9 Select the most appropriate synonym of the given word.

Repercussion

- Ans**
- ☒ 1. Duplication
 - ☒ 2. Consequence
 - ☒ 3. Recusation
 - ☒ 4. Apprehension

Question ID : 264330143977
Status : Answered
Chosen Option : 2

Q.10 Select the option that expresses the given sentence in active voice.
It will be done by me.

- Ans**
- ☒ 1. I will do it.
 - ☒ 2. I do it.
 - ☒ 3. I did it.
 - ☒ 4. I have done it.

Question ID : 264330150434
Status : Answered
Chosen Option : 1

Q.11 Select the most appropriate synonym of the underlined word in the given sentence.
Let us adjourn the meeting here, as it is lunchtime now.

- Ans**
- ☒ 1. Postpone
 - ☒ 2. Prohibit
 - ☒ 3. Stimulate
 - ☒ 4. Expedite

Question ID : 264330143212
Status : Answered
Chosen Option : 1

Q.12 Parts of a sentence are given below in jumbled order, except the first part. Arrange the parts in the correct order to form a meaningful sentence.

As for the first historical fallacy,...

- A. only some specialists can unravel its inscrutable mysteries
- B. that the past was so different
- C. from the present that
- D. many people wrongly believe

Ans ☒ 1. BCDA
☒ 2. DCBA
☒ 3. DBCA
☒ 4. ABCD

Question ID : 264330149910

Status : Answered

Chosen Option : 3

Q.13 Select the most appropriate synonym of the given word.
Hideous

Ans ☒ 1. Repulsive
☒ 2. Pretty
☒ 3. Attractive
☒ 4. Plain

Question ID : 264330149869

Status : Answered

Chosen Option : 1

Q.14 The following sentence has been split into four segments. Identify the segment that contains a grammatical error.

An old man whom / we met while coming back / from our college lives / at my uncle's place.

Ans ☒ 1. An old man whom
☒ 2. at my uncle's place
☒ 3. we met while coming back
☒ 4. from our college lives

Question ID : 264330147604

Status : Answered

Chosen Option : 1

Q.15 Select the INCORRECTLY spelt word from the given sentence.

The crowd jerrred and laughed, but the young prince sprang to the gate with his face flushed.

Ans ☒ 1. Prince
☒ 2. Laughed
☒ 3. Sprang
☒ 4. Jerred

Question ID : 264330149876

Status : Answered

Chosen Option : 4

Q.16 Sentences of a paragraph are given below in jumbled order. Arrange the sentences in the correct order to form a meaningful and coherent paragraph.

A.Despite numerous setbacks and rejections, he refused to give up on his dream of making it big.

B.John had always been a talented musician, but he struggled to find his place in the competitive and cutthroat music industry.

C.With the help of a supportive community of fellow musicians and fans, John continued to hone his craft and develop his own unique sound.

D.Eventually, his hard work paid off and he landed a record deal with a major label.

Ans ☒ 1. BACD

☒ 2. DCAB

☒ 3. BDAC

☒ 4. CBAD

Question ID : 264330150163

Status : Answered

Chosen Option : 1

Q.17 Select the option that can be used as a one-word substitute for the given group of words.

One who eats human flesh

Ans ☒ 1. Mammal

☒ 2. Vegetarian

☒ 3. Carnivore

☒ 4. Cannibal

Question ID : 264330144102

Status : Answered

Chosen Option : 4

Q.18 Select the INCORRECTLY spelt word.

Ans ☒ 1. Acknowledgment

☒ 2. Accomodate

☒ 3. Address

☒ 4. Acquire

Question ID : 264330143153

Status : Answered

Chosen Option : 1

Q.19 Choose the correct meaning of the underlined word in the given sentence.

My friend works as a florist at the shop down the street.

Ans ☒ 1. A person who sells and arranges cut flowers

☒ 2. A person who sells sweets

☒ 3. Someone who grows flowers

☒ 4. Someone who works in a bank

Question ID : 264330149740

Status : Answered

Chosen Option : 1

Q.20 Select the option that expresses the given sentence in active voice.
My pencils have been stolen.

- Ans ☒ 1. Somebody have stolen my pencils.
☒ 2. Somebody steals my pencils.
☒ 3. Somebody has stolen my pencils.
☒ 4. Somebody stole my pencils.

Question ID : 264330143056

Status : Answered

Chosen Option : 3

Comprehension:

In the following passage some words have been deleted. Read the passage carefully and select the most appropriate option to fill in each blank.

Harry Potter was first introduced in the novel, 'Harry Potter and the Philosopher's Stone', as an orphan who is (1)_____ by his guardian aunt and uncle and their son. On his 11th birthday Harry discovers that his parents were a witch and a wizard and that he, a wizard himself, has been invited to (2)_____ Hogwarts School of Witchcraft and Wizardry. He also learns that his parents had not (3)_____ in a car accident, as his aunt and uncle had told him, but that they instead had been murdered by an evil wizard named Voldemort. Harry was the only person to have ever (4)_____ an attack by Voldemort—by somehow (5)_____ the latter's 'killing curse'—which left him with a lightning-bolt-shaped scar on his forehead.

SubQuestion No : 21

Q.21 Select the most appropriate option to fill in blank number 1.

- Ans ☒ 1. crushed
☒ 2. mistreated
☒ 3. dispirited
☒ 4. bowed

Question ID : 264330149564

Status : Answered

Chosen Option : 2

Comprehension:

In the following passage some words have been deleted. Read the passage carefully and select the most appropriate option to fill in each blank.

Harry Potter was first introduced in the novel, 'Harry Potter and the Philosopher's Stone', as an orphan who is (1)_____ by his guardian aunt and uncle and their son. On his 11th birthday Harry discovers that his parents were a witch and a wizard and that he, a wizard himself, has been invited to (2)_____ Hogwarts School of Witchcraft and Wizardry. He also learns that his parents had not (3)_____ in a car accident, as his aunt and uncle had told him, but that they instead had been murdered by an evil wizard named Voldemort. Harry was the only person to have ever (4)_____ an attack by Voldemort—by somehow (5)_____ the latter's 'killing curse'—which left him with a lightning-bolt-shaped scar on his forehead.

SubQuestion No : 22

Q.22 Select the most appropriate option to fill in blank number 2.

- Ans ☒ 1. see
☒ 2. escort
☒ 3. accompany
☒ 4. attend

Question ID : 264330149565

Status : Answered

Chosen Option : 4

Comprehension:

In the following passage some words have been deleted. Read the passage carefully and select the most appropriate option to fill in each blank.

Harry Potter was first introduced in the novel, 'Harry Potter and the Philosopher's Stone', as an orphan who is (1)_____ by his guardian aunt and uncle and their son. On his 11th birthday Harry discovers that his parents were a witch and a wizard and that he, a wizard himself, has been invited to (2)_____ Hogwarts School of Witchcraft and Wizardry. He also learns that his parents had not (3)_____ in a car accident, as his aunt and uncle had told him, but that they instead had been murdered by an evil wizard named Voldemort. Harry was the only person to have ever (4)_____ an attack by Voldemort—by somehow (5)_____ the latter's 'killing curse'—which left him with a lightning-bolt-shaped scar on his forehead.

SubQuestion No : 23

Q.23 Select the most appropriate option to fill in blank number 3.

Ans ☒ 1. perished

☐ 2. departed

☐ 3. lost

☐ 4. vanished

Question ID : 264330149566

Status : Answered

Chosen Option : 1

Comprehension:

In the following passage some words have been deleted. Read the passage carefully and select the most appropriate option to fill in each blank.

Harry Potter was first introduced in the novel, 'Harry Potter and the Philosopher's Stone', as an orphan who is (1)_____ by his guardian aunt and uncle and their son. On his 11th birthday Harry discovers that his parents were a witch and a wizard and that he, a wizard himself, has been invited to (2)_____ Hogwarts School of Witchcraft and Wizardry. He also learns that his parents had not (3)_____ in a car accident, as his aunt and uncle had told him, but that they instead had been murdered by an evil wizard named Voldemort. Harry was the only person to have ever (4)_____ an attack by Voldemort—by somehow (5)_____ the latter's 'killing curse'—which left him with a lightning-bolt-shaped scar on his forehead.

SubQuestion No : 24

Q.24 Select the most appropriate option to fill in blank number 4.

Ans ☒ 1. survived

☐ 2. thrived

☐ 3. continued

☐ 4. tolerated

Question ID : 264330149567

Status : Answered

Chosen Option : 1

Comprehension:

In the following passage some words have been deleted. Read the passage carefully and select the most appropriate option to fill in each blank.

Harry Potter was first introduced in the novel, 'Harry Potter and the Philosopher's Stone', as an orphan who is (1)_____ by his guardian aunt and uncle and their son. On his 11th birthday Harry discovers that his parents were a witch and a wizard and that he, a wizard himself, has been invited to (2)_____ Hogwarts School of Witchcraft and Wizardry. He also learns that his parents had not (3)_____ in a car accident, as his aunt and uncle had told him, but that they instead had been murdered by an evil wizard named Voldemort. Harry was the only person to have ever (4)_____ an attack by Voldemort—by somehow (5)_____ the latter's 'killing curse'—which left him with a lightning-bolt-shaped scar on his forehead.

SubQuestion No : 25

Q.25 Select the most appropriate option to fill in blank number 5.

- Ans ☒ 1. rallying
☒ 2. recovering
☒ 3. failing
☒ 4. rebounding

Question ID : 264330149568

Status : Answered

Chosen Option : 2

Section : General Intelligence

Q.1 The second number in the given number pairs is obtained by performing certain mathematical operation(s) on the first number. The same operation(s) are followed in all the number pairs except one. Find that odd number pair.

(NOTE: Operations should be performed on whole numbers, without breaking down the numbers into their constituent digits. E.g. 13 – Operations on 13 such as adding/subtracting/multiplying, etc. to 13 can be performed. Breaking down 13 into 1 and 3 and then performing mathematical operations on 1 and 3 is not allowed.)

- Ans ☒ 1. 32 : 99
☒ 2. 42 : 123
☒ 3. 24 : 75
☒ 4. 64 : 195

Question ID : 264330150857

Status : Answered

Chosen Option : 2

Q.2 Select the correct mirror image of the given figure when the mirror is placed at MN as shown below.

P u n 2 g r
M
N

- Ans ☒ 1. ۹ ۵ ۸ ۲ ۹
☒ 2. ۹ ۵ ۸ ۲ ۹
☒ 3. ۹ ۵ ۲ ۸ ۹
☒ 4. ۹ ۵ ۸ ۲ ۹

Question ID : 264330146713

Status : Answered

Chosen Option : 1

Q.3 Read the given statements and conclusions carefully. You have to take the given statements to be true even if they seem to be at variance from commonly known facts. You have to decide which conclusion/s logically follow/s from the given statements.

Statement: Some clowns are scary. All scary are ghosts. Some ghosts are friendly.

Conclusion(I): All ghosts are friendly.

Conclusion(II): All clowns are ghosts.

- Ans**
- ☒ 1. Only conclusion (I) follows.
 - ☒ 2. Neither conclusion (I) nor (II) follow.
 - ☒ 3. Only conclusion (II) follows.
 - ☒ 4. Both conclusions (I) and (II) follow.

Question ID : 264330146766
Status : Answered
Chosen Option : 2

Q.4 Select the combination of letters which when sequentially placed in the blanks of the given series will complete the series.

LMN_LMN_LM_NL_MMNN

- Ans**
- ☒ 1. LMLM
 - ☒ 2. LLML
 - ☒ 3. LMNL
 - ☒ 4. LLLM

Question ID : 264330147098
Status : Answered
Chosen Option : 4

Q.5 The position of which letter will be exactly at the centre of the arrangement if each of the letters in the word TOUCHED is arranged in reversed alphabetical order, i.e. starting from the last letter (Z)?

- Ans**
- ☒ 1. E
 - ☒ 2. T
 - ☒ 3. O
 - ☒ 4. H

Question ID : 264330146883
Status : Answered
Chosen Option : 4

Q.6 Which number will replace the question mark (?) to complete the given series?
6, 11, 21, 36, 56, ?

- Ans**
- ☒ 1. 91
 - ☒ 2. 81
 - ☒ 3. 86
 - ☒ 4. 76

Question ID : 264330150700
Status : Answered
Chosen Option : 2

Q.7 What will come in the place of '?' in the following equation, if '+' and '-' are interchanged and '×' and '÷' are interchanged?

$$55 + 42 \times 7 \div 11 - 30 = ?$$

- Ans**
- ☒ 1. 25
 - ☒ 2. 11
 - ☒ 3. 22
 - ☒ 4. 19

Question ID : 264330152188

Status : Answered

Chosen Option : 4

Q.8 In the following number-pairs, the second number is obtained by applying certain mathematical operations to the first number. Select the option in which the numbers are related in the same way as are the numbers of the following pairs.

(NOTE: Operations should be performed on the whole numbers, without breaking down the numbers into its constituent digits. E.g. 13 – Operations on 13 such as adding/ subtracting /multiplying etc. to 13 can be performed. Breaking down 13 into 1 and 3 and then performing mathematical operations on 1 and 3 is not allowed.)

8, 108

14, 186

- Ans**
- ☒ 1. 5, 73
 - ☒ 2. 11, 147
 - ☒ 3. 16, 204
 - ☒ 4. 9, 107

Question ID : 264330146392

Status : Answered

Chosen Option : 2

Q.9 In a certain code language, 'towards the main gate' is written as 'nt zb ps cq' and 'main purpose of this' is written as 'rq kl bt zb'. How is 'main' written in the given language?

- Ans**
- ☒ 1. ps
 - ☒ 2. kl
 - ☒ 3. rq
 - ☒ 4. zb

Question ID : 264330147205

Status : Answered

Chosen Option : 4

Q.10 In a certain code language,
 $A + B$ means 'A is the mother of B'
 $A - B$ means 'A is the brother of B'
 $A \times B$ means 'A is the wife of B'
 $A \div B$ means 'A is the father of B'
 Based on the above, how is F related to J if ' $F + G \times H \div I - J$ '?

- Ans**
- ✓ 1. Mother's mother
 - ✗ 2. Daughter
 - ✗ 3. Wife's Father
 - ✗ 4. Mother's husband

Question ID : 264330147214
 Status : Answered
 Chosen Option : 1

Q.11 If 'A' stands for '+', 'B' stands for '×', 'C' stands for '÷' and 'D' stands for '−', what will come in place of the question mark '?' in the following equation?

$$43 B 2 C 12 D 82 A 2 = ?$$

- Ans**
- ✗ 1. 55
 - ✗ 2. 58
 - ✗ 3. 56
 - ✓ 4. 57

Question ID : 264330147393
 Status : Answered
 Chosen Option : 4

Q.12 Select the number from among the given options that can replace the question mark (?) in the following series.

172, 175, 184, 211, 292, ?

- Ans**
- ✓ 1. 535
 - ✗ 2. 537
 - ✗ 3. 534
 - ✗ 4. 532

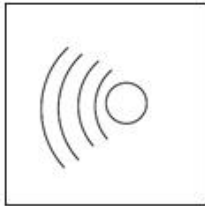
Question ID : 264330146894
 Status : Answered
 Chosen Option : 1

Q.13 Identify the figure given in the options which when put in place of the question mark (?) will logically complete the series.

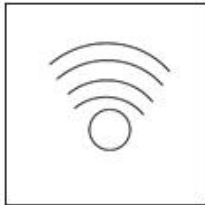


Ans

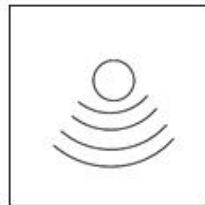
✗ 1.



✗ 2.



✓ 3.



✗ 4.



Question ID : 264330147232

Status : Answered

Chosen Option : 3

Q.14 The second number in the given number pairs is obtained by performing certain mathematical operation(s) on the first number. The same operation(s) are followed in all the number pairs except one. Find that odd number pair.

Ans

✓ 1. 9 : 26

✗ 2. 5 : 17

✗ 3. 3 : 13

✗ 4. 8 : 23

Question ID : 264330147135

Status : Not Attempted and
Marked For Review

Chosen Option : --

Q.15 'NPQS' is related to 'JLMO' in a certain way based on the English alphabetical order. In the same way, 'JLMO' is related to 'FHIK'. To which of the following is 'PRSU' related, following the same logic?

- Ans**
- ☒ 1. LQON
 - ☒ 2. LQNO
 - ☒ 3. LNOQ
 - ☒ 4. LOQN

Question ID : **264330150687**
Status : **Answered**
Chosen Option : **3**

Q.16 Three of the following four are alike in a certain way and thus form a group. Which is the one that does NOT belong to that group?

- Ans**
- ☒ 1. SRP
 - ☒ 2. JIG
 - ☒ 3. HGE
 - ☒ 4. FCB

Question ID : **264330151971**
Status : **Answered**
Chosen Option : **4**

Q.17 BEGC is related to ILNJ in a certain way based on the English alphabetical order. In the same way, LOQM is related to SVXT. To which of the following is DGIE related to, following the same logic?

- Ans**
- ☒ 1. MPRN
 - ☒ 2. KNQM
 - ☒ 3. KNPL
 - ☒ 4. KMPN

Question ID : **264330147275**
Status : **Answered**
Chosen Option : **3**

Q.18 The position of how many letters will remain unchanged if each of the letter in the word 'GASOLINE' is arranged in alphabetical order?

- Ans**
- ☒ 1. Two
 - ☒ 2. Three
 - ☒ 3. Four
 - ☒ 4. One

Question ID : **264330147077**
Status : **Answered**
Chosen Option : **4**

Q.19 Select the combination of letters that when sequentially placed in the blanks of the given series will make the series logically complete.

A _ CCD _ BCCDA _ CCDABC _ D

- Ans**
- ☒ 1. CACB
 - ☒ 2. DACB
 - ☒ 3. BABC
 - ☒ 4. BBBB

Question ID : 264330146741

Status : Answered

Chosen Option : 3

Q.20 In a certain code language,

A + B means 'A is the mother of B'

A - B means 'A is the brother of B'

A × B means 'A is the wife of B'

A ÷ B means 'A is the father of B'

Based on the above, how is Q related to T if 'P + Q - R × S ÷ T'?

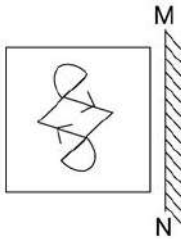
- Ans**
- ☒ 1. Wife's father
 - ☒ 2. Brother's wife
 - ☒ 3. Mother's brother
 - ☒ 4. Daughter

Question ID : 264330147212

Status : Answered

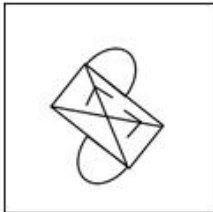
Chosen Option : 3

Q.21 Select the correct mirror image of the given figure when the mirror is placed at MN as shown.

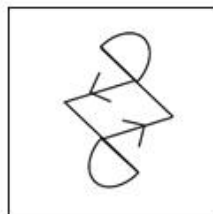


Ans

✗ 1.



✓ 2.



✗ 3.



✗ 4.



Question ID : 264330146469

Status : Answered

Chosen Option : 2

Q.22 GB 13 is related to HD 17 in a certain way. In the same way, DK 18 is related to EM 22. To which of the following is RE 16 related following the same logic?

Ans

✗ 1. TF 20

✗ 2. TG 19

✓ 3. SG 20

✗ 4. SF 18

Question ID : 264330151987

Status : Answered

Chosen Option : 3

Q.23 Select the set in which the numbers are related in the same way as are the numbers of the following sets.

(NOTE: Operations should be performed on whole numbers, without breaking down the numbers into their constituent digits. E.g. 13 – Operations on 13 such as adding/ subtracting /multiplying, etc. to 13 can be performed. Breaking down 13 into 1 and 3 and then performing mathematical operations on 1 and 3 is not allowed.)

(377, 13, 29)

(564, 12, 47)

Ans ☒ 1. (227, 25, 9)

☒ 2. (304, 19, 16)

☒ 3. (475, 28, 17)

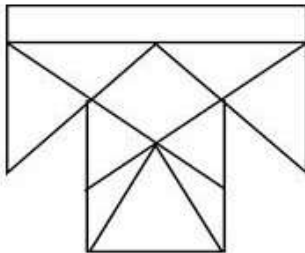
☒ 4. (274, 9, 31)

Question ID : 264330150851

Status : Answered

Chosen Option : 2

Q.24 How many triangles are there in the given figure?



Ans ☒ 1. 14

☒ 2. 15

☒ 3. 16

☒ 4. 13

Question ID : 264330146911

Status : Not Attempted and
Marked For Review

Chosen Option : --

Q.25 In a certain code language, 'come with me' is written as 'mx zt rq' and 'with your permission' is written as 'pr sn zt'. How is 'with' written in the given language?

Ans ☒ 1. zt

☒ 2. mx

☒ 3. sn

☒ 4. rq

Question ID : 264330147191

Status : Answered

Chosen Option : 1

Q.1 A cask having a capacity of 600 litres is initially filled with wine. From this cask y litres of wine are first drawn and replaced with water. From this mixture, 120 litres are drawn and replaced with water. From this further diluted mixture, 120 litres are drawn again and replaced with water. The ratio of wine to water in the cask is now 12 : 13. What is the value of y ?

- Ans**
- ☒ 1. 125
 - ☒ 2. 150
 - ☒ 3. 200
 - ☒ 4. 100

Question ID : 264330146777
Status : Answered
Chosen Option : 2

Q.2 The simple interest on a sum of ₹7,400 for 36 months is ₹888. What is the rate percentage of interest per annum?

- Ans**
- ☒ 1. 3%
 - ☒ 2. 8%
 - ☒ 3. 5%
 - ☒ 4. 4%

Question ID : 264330148398
Status : Answered
Chosen Option : 4

Q.3 Sourabh purchased an article for ₹48,000 and sold it at a loss of 12%. With that amount, she purchased another item and sold it at a gain of 20%. What is the overall gain or loss in ₹?

- Ans**
- ☒ 1. ₹2,688 loss
 - ☒ 2. ₹14,208 loss
 - ☒ 3. ₹2,688 gain
 - ☒ 4. ₹14,208 gain

Question ID : 264330147622
Status : Answered
Chosen Option : 3

Q.4 If $\sin \theta \cos \theta = \frac{\sqrt{2}}{3}$, then the value of $(\sin^6 \theta + \cos^6 \theta)$ is:

Ans

- ✓ 1. $\frac{1}{3}$
- ✗ 2. $\frac{4}{3}$
- ✗ 3. $\frac{2}{3}$
- ✗ 4. $\frac{5}{3}$

Question ID : 264330148059
Status : Answered
Chosen Option : 1

Q.5 If $(d + e + f) = 14$, $(d^2 + e^2 + f^2) = 96$, then find the value of $(de + ef + fd)$.

Ans

- ✗ 1. 75
- ✗ 2. 25
- ✓ 3. 50
- ✗ 4. 100

Question ID : 264330150567
Status : Answered
Chosen Option : 3

Q.6 A shopkeeper sells a chair for ₹2,325 after allowing a discount of 22.5% on the marked price. The discount offered was:

Ans

- ✓ 1. 675
- ✗ 2. 1,257
- ✗ 3. 880
- ✗ 4. 1,050

Question ID : 264330148259
Status : Answered
Chosen Option : 1

Q.7 In $\triangle CAB$, $\angle CAB = 90^\circ$ and $AD \perp BC$. If $AC = 24$ cm, $AB = 10$ cm, then find the value of AD (in cm).

Ans

- ✓ 1. 9.23
- ✗ 2. 8.23
- ✗ 3. 7.14
- ✗ 4. 10.23

Question ID : 264330148762
Status : Answered
Chosen Option : 1

Q.8 If A is an acute angle and $8 \sec A = 17$, find the value of $\tan A$.

Ans

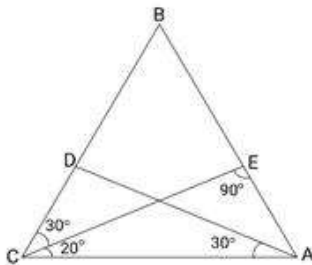
- ☒ 1. $\frac{15}{17}$
- ☒ 2. $\frac{15}{8}$
- ☒ 3. $\frac{8}{15}$
- ☒ 4. $\frac{8}{17}$

Question ID : 264330148113

Status : Answered

Chosen Option : 2

Q.9 In figure, $\angle ADB$ is equal to:



Ans

- ☒ 1. 40°
- ☒ 2. 60°
- ☒ 3. 80°
- ☒ 4. 50°

Question ID : 264330148173

Status : Answered

Chosen Option : 3

Q.10 If $g = (2 - \sqrt{3})$, what will be the value of $(g^3 - \frac{1}{g^3})$?

Ans

- ☒ 1. $-30\sqrt{3}$
- ☒ 2. 52
- ☒ 3. $30\sqrt{3}$
- ☒ 4. -52

Question ID : 264330150572

Status : Not Attempted and
Marked For Review

Chosen Option : --

Q.11 A man offers a 40% discount on an item which has been marked 50% above the cost price. If the selling price of the item is ₹1,305, then the cost price is:

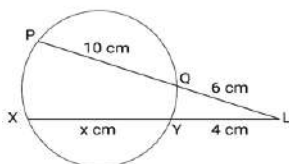
- Ans**
- ☒ 1. ₹1,360
 - ☒ 2. ₹1,450
 - ☒ 3. ₹1,680
 - ☒ 4. ₹1,560

Question ID : 264330148789

Status : Answered

Chosen Option : 2

Q.12 In the figure, chords $XY = x$ cm and $PQ = 10$ cm are intersecting each other at point L . Find the length of XY (in cm).



- Ans**
- ☒ 1. 22
 - ☒ 2. 21
 - ☒ 3. 20
 - ☒ 4. 23

Question ID : 264330149456

Status : Answered

Chosen Option : 3

Q.13 A cylindrical pillar is 84 cm in diameter and 5 m in height. Find the cost of painting the curved surface of the pillar at the rate of ₹15 per m^2 . (Use $\pi = \frac{22}{7}$)

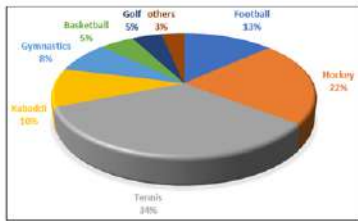
- Ans**
- ☒ 1. ₹198
 - ☒ 2. ₹184
 - ☒ 3. ₹208
 - ☒ 4. ₹216

Question ID : 264330148102

Status : Answered

Chosen Option : 1

Q.14 The following pie chart gives the budget allocation for various sports mentioned. The numbers shown are percentages over 360 degrees.



If the total amount for all the sports is ₹42,76,80,000 then the allocation for Hockey, Basketball, and Gymnastics together exceeds the amount allocated to Football, Kabaddi, and Golf together by:

- Ans**
- ☒ 1. 9524000
 - ☒ 2. 7453000
 - ☒ 3. 29937600
 - ☒ 4. 8316000

Question ID : 264330150638

Status : Not Attempted and
Marked For Review

Chosen Option : --

Q.15 $\cot^2 \theta - \operatorname{cosec}^2 \theta$ equals to:

- Ans**
- ☒ 1. 0
 - ☒ 2. $\tan \theta$
 - ☒ 3. 1
 - ☒ 4. -1

Question ID : 264330147943

Status : Answered

Chosen Option : 4

Q.16 In an election between two candidates, 85% of the electorate cast their votes. 6% of the votes polled were declared invalid. If the winning candidate secured 60% of the valid votes, how many votes did the winning candidate receive if the number of eligible voters was 10000?

- Ans**
- ☒ 1. 4784
 - ☒ 2. 4804
 - ☒ 3. 4794
 - ☒ 4. 4824

Question ID : 264330146780

Status : Not Attempted and
Marked For Review

Chosen Option : --

Q.17 Classification of 100 students based on the marks obtained by them in Mathematics and Physics in an examination is given below.

Subject	Marks out of 50				
	40 and above	30 and above	20 and above	10 and above	0 and above
Mathematics	9	32	80	92	100
Physics	4	21	66	81	100

How many students have got marks less than 10 in Mathematics?

- Ans**
- ✓ 1. 8
 - ✗ 2. 19
 - ✗ 3. 12
 - ✗ 4. 20

Question ID : 264330148754

Status : Answered

Chosen Option : 1

Q.18 Refer to the given data table and answer the following question:

Course	Boys	Girls
B. Sc.	82	90
B. A.	48	102
B. Com.	84	96
B. Ag.	58	48
B. tech.	58	42

What percentage of students who are pursuing B. Ag. are girls?

- Ans**
- ✗ 1. 47.92%
 - ✗ 2. 54.71%
 - ✗ 3. 52.28%
 - ✓ 4. 45.28%

Question ID : 264330148799

Status : Answered

Chosen Option : 4

Q.19 The difference between the simple and compound interest on a certain sum of money at an 8% rate of interest per annum for two years is ₹56. Find the sum.

- Ans**
- ✓ 1. ₹8,750
 - ✗ 2. ₹7,058
 - ✗ 3. ₹7,805
 - ✗ 4. ₹8,057

Question ID : 264330147969

Status : Answered

Chosen Option : 1

Q.20 Simplify the expression:
 $(2x + 13 - y)(2x - 13 - y)$

- Ans
- ☒ 1. $4x^2 - y^2 - 4xy - 169$
 - ☒ 2. $4x^2 + y^2 + 4xy - 169$
 - ☒ 3. $4x^2 + y^2 - 4xy - 169$
 - ☒ 4. $4x^2 + y^2 - 4xy + 169$

Question ID : 264330150560
 Status : Answered
 Chosen Option : 3

Q.21 In an isosceles triangle, if the unequal angle is 4 times the sum of the equal angles, then each equal angle is:

- Ans
- ☒ 1. 25°
 - ☒ 2. 30°
 - ☒ 3. 21°
 - ☒ 4. 18°

Question ID : 264330148801
 Status : Answered
 Chosen Option : 4

Q.22 The six-digit number $N = 4a6b9c$ is divisible by 99, then the maximum sum of the digits of N is:

- Ans
- ☒ 1. 18
 - ☒ 2. 36
 - ☒ 3. 45
 - ☒ 4. 27

Question ID : 264330149759
 Status : Not Answered
 Chosen Option : --

Q.23 Given that x varies directly as y and $x = 45$ when $y = 9$. What is the value of x when $y = 50$?

- Ans
- ☒ 1. 225
 - ☒ 2. 190
 - ☒ 3. 175
 - ☒ 4. 250

Question ID : 264330147931
 Status : Answered
 Chosen Option : 4

Q.24 Two trains that are 125 metres and 99 metres in length, respectively, are running in opposite directions at the speeds of 40 km/h and 32 km/h, respectively. In how much time will they be completely clear of each other from the moment they meet?

- Ans**
- ☒ 1. 10.2 sec
 - ☒ 2. 11.2 sec
 - ☐ 3. 9.2 sec
 - ☐ 4. 12.2 sec

Question ID : 264330148249
Status : Answered
Chosen Option : 2

Q.25 Raju and Ramu together can do a piece of work in 8 days, and Raju alone can do it in 12 days. In how many days can Ramu alone do it?

- Ans**
- ☐ 1. 18 days
 - ☐ 2. 20 days
 - ☐ 3. 22 days
 - ☒ 4. 24 days

Question ID : 264330147630
Status : Answered
Chosen Option : 4

Section : General Awareness

Q.1 Revenue expenditure minus revenue receipts is _____.

- Ans**
- ☒ 1. revenue deficit
 - ☐ 2. budget deficit
 - ☐ 3. always negative
 - ☐ 4. always positive

Question ID : 264330145689
Status : Answered
Chosen Option : 1

Q.2 Which of these is NOT one of the direct outcomes that can be attributed to a good industrial sector?

- Ans**
- ☐ 1. Provision of relatively stable employment
 - ☒ 2. Doubling of farmers' income
 - ☐ 3. Promotion of modernisation
 - ☐ 4. Provision of mass consumption manufactured goods

Question ID : 264330144718
Status : Answered
Chosen Option : 2

Q.3 Rast-Goftar, a newspaper, propagated the messages of socio-religious reforms for which of the following societies?

- Ans**
- ☐ 1. Hindu
 - ☐ 2. Muslim
 - ☐ 3. Sikh
 - ☒ 4. Parsi

Question ID : 264330152565
Status : Answered
Chosen Option : 2

Q.4 Which of the following states topped the medals tally in the Northeast Olympic Games 2022?

- Ans**
- ☐ 1. Assam
 - ☐ 2. Tripura
 - ☐ 3. Arunachal Pradesh
 - ☒ 4. Manipur

Question ID : 264330145971
Status : Answered
Chosen Option : 4

Q.5 Which of the following is the most widespread forest type in India?

- Ans**
- ☐ 1. Littoral and Swamp Forests
 - ☐ 2. Tropical Thorn Forests
 - ☐ 3. Montane Forests
 - ☒ 4. Tropical Deciduous Forests

Question ID : 264330149369
Status : Answered
Chosen Option : 4

Q.6 What is the number of players in a Kho Kho team?

- Ans**
- ☒ 1. 12
 - ☐ 2. 13
 - ☐ 3. 10
 - ☐ 4. 11

Question ID : 264330146003
Status : Answered
Chosen Option : 3

Q.7 Which of the following is a plantation crop found abundantly in Assam?

- Ans ☒ 1. Tea
☒ 2. Wheat
☒ 3. Rice
☒ 4. Maize

Question ID : 264330150295
 Status : Answered
 Chosen Option : 1

Q.8 Which of the following statement(s) is/are FALSE?

- A) The impact of externality is always positive.
 B) Real national income means national income at constant prices

- Ans ☒ 1. Only B
☒ 2. Only A
☒ 3. Neither A nor B
☒ 4. Both A and B

Question ID : 264330145729
 Status : Answered
 Chosen Option : 2

Q.9 Which of the following grains contain oryzenin?

- Ans ☒ 1. Barley
☒ 2. Wheat
☒ 3. Soyabean
☒ 4. Rice

Question ID : 264330144482
 Status : Answered
 Chosen Option : 3

Q.10 With reference to Sonepur Cattle fair, consider the following statements and select the correct option.

- a) It is associated with the Hariharanatha temple.
- b) It begins on Purnima (full moon night) and Kartik month.
- c) It is celebrated in the Madhya Pradesh state.

Ans ☒ 1. Both a and b
☒ 2. Both a and c
☒ 3. Both b and c
☒ 4. a, b, c

Question ID : 264330150816
 Status : Answered
 Chosen Option : 1

Q.11 Which of the following is the proper number of electrons in 1 A of current?

Ans ☒ 1. 6.25×10^{21}
☒ 2. 6.25×10^{18}
☒ 3. 6.25×10^{19}
☒ 4. 6.25×10^{15}

Question ID : 264330144461
 Status : Answered
 Chosen Option : 3

Q.12 In 2023, the Ministry of Consumer Affairs, Government of India unveiled guidelines titled 'Endorsements Know-Hows!' that are meant for _____.

Ans ☒ 1. junk food producers
☒ 2. instant food producers
☒ 3. consumers of products
☒ 4. social media influencers

Question ID : 264330145951
 Status : Answered
 Chosen Option : 3

Q.13 In India which of the following statements is NOT correct about Fundamental Duties?

Ans ☒ 1. To encourage common brotherhood
☒ 2. To develop scientific temper
☒ 3. To organise village panchayat
☒ 4. To protect country

Question ID : 264330146551
 Status : Answered
 Chosen Option : 3

Q.14 Which of these is NOT one of the rationales behind microfinance?

Ans ☒ 1.

Many innovative institutional mechanisms have developed across the world to enhance credit to the poor even in the absence of formal mortgages.

☒ 2. More than access to credit poor need subsidies

☒ 3.

The absence of formal employment makes the poor non 'bankable'.

☒ 4. More than subsidies poor need access to credit

Question ID : 264330144677

Status : Answered

Chosen Option : 2

Q.15 In 2006, Ileana Citaristi, an Italian Odissi dancer, was awarded with the _____.

Ans ☒ 1. Padma Bhushan

☒ 2. Bharat Ratna

☒ 3. Padma Shri

☒ 4. Padma Vibhushan

Question ID : 264330151258

Status : Answered

Chosen Option : 3

Q.16 Which essential amino acid is necessary for the production of our brain's chemical messengers including melatonin, dopamine, noradrenaline and thyroxine?

Ans ☒ 1. Leucine

☒ 2. Phenylalanine

☒ 3. Tryptophan

☒ 4. Valine

Question ID : 264330150725

Status : Answered

Chosen Option : 2

Q.17 Which of the following is NOT included in the category of Directive Principles of State Policy of the Indian Constitution ?

Ans ☒ 1. Liberal

☒ 2. Nehruvian

☒ 3. Socialist

☒ 4. Gandhian

Question ID : 264330146560

Status : Answered

Chosen Option : 3

Q.18 The music legend Jagjit Singh is associated with:

- Ans ☒ 1. Ghazal
☒ 2. Classical Music
☒ 3. Western Music
☒ 4. Instrument

Question ID : 264330144770
 Status : Answered
 Chosen Option : 1

Q.19 What is the classical dance of Assam?

- Ans ☒ 1. Sattriya Nritya
☒ 2. Bharatnatyam
☒ 3. Kathak
☒ 4. Kuchipudi

Question ID : 264330148637
 Status : Answered
 Chosen Option : 1

Q.20 The Pala Dynasty rulers were primarily patrons of which religion?

- Ans ☒ 1. Buddhist
☒ 2. Jain
☒ 3. Hindu
☒ 4. Islam

Question ID : 264330150204
 Status : Answered
 Chosen Option : 1

Q.21 Those engaged in agriculture in India suffer from which of these unemployment types?

- Ans ☒ 1. Frictional Unemployment
☒ 2. Technological Unemployment
☒ 3. Structural Unemployment
☒ 4. Disguised Unemployment

Question ID : 264330149378
 Status : Answered
 Chosen Option : 4

Q.22 Which Indian state was the first to make it mandatory for all homes to have rooftop rainwater harvesting structures?

- Ans**
- ☒ 1. Sikkim
 - ☐ 2. Tamil Nadu
 - ☐ 3. Odisha
 - ☐ 4. Haryana

Question ID : 264330144489
Status : Answered
Chosen Option : 2

Q.23 In which year did the Central Statistical Office adopt the GVA concept in India?

- Ans**
- ☐ 1. 2012
 - ☒ 2. 2015
 - ☐ 3. 1993
 - ☐ 4. 2010

Question ID : 264330151269
Status : Answered
Chosen Option : 2

Q.24 Who among the following Indian sports women has received the BBC Indian Sportswoman of The Year 2022 award?

- Ans**
- ☐ 1. Nikhat Zareen
 - ☐ 2. PV Sindhu
 - ☐ 3. Saina Nehwal
 - ☒ 4. Mirabai Chanu

Question ID : 264330154807
Status : Answered
Chosen Option : 4

Q.25 As on 1 April 2023, how many national laboratories does the Council of Scientific & Industrial Research (CSIR) have in India?

- Ans**
- ☒ 1. 37
 - ☐ 2. 47
 - ☐ 3. 27
 - ☐ 4. 17

Question ID : 264330150382
Status : Marked For Review
Chosen Option : 2