

Combined Higher Secondary Level Examination 2023 Tier I

|                |                       |
|----------------|-----------------------|
| Roll Number    |                       |
| Candidate Name |                       |
| Venue Name     |                       |
| Exam Date      | 17/08/2023            |
| Exam Time      | 2:30 PM - 3:30 PM     |
| Subject        | CHSL Exam 2023 Tier I |

Section : English Language

Q.1 Select the most appropriate option that can substitute the underlined segment in the given sentence.

She is the least reliablest person of all.

- Ans
- ☒ 1. leastest reliable
  - ☒ 2. less reliable
  - ☒ 3. least reliable
  - ☒ 4. lesser reliable

Question ID : 264330144822  
Status : Answered  
Chosen Option : 3

Q.2 Select the most appropriate synonym of the word 'Ravishing' from the given sentence.

The architect designed a stunning skyscraper with a sophisticated structural system.

- Ans
- ☒ 1. Sophisticated
  - ☒ 2. Skyscraper
  - ☒ 3. Stunning
  - ☒ 4. System

Question ID : 264330144156  
Status : Answered  
Chosen Option : 3

Q.3 Select the most appropriate option that can substitute the underlined words in the given sentence.

The young artist spent countless hours perfecting her craft, trying with various methods and mediums, and honing her creative vision until she had produced a stunning collection of works that showcased her unique talent and perspective.

- Ans
- ☒ 1. exploring with different factors
  - ☒ 2. experimenting with different techniques
  - ☒ 3. merging with different variations
  - ☒ 4. researching with different types

Question ID : 264330144143  
Status : Answered  
Chosen Option : 2

# Test Prime

**ALL EXAMS,  
ONE SUBSCRIPTION**



**70,000+**  
Mock Tests



**Personalised  
Report Card**



**Unlimited  
Re-Attempt**



**600+**  
Exam Covered



**Previous Year  
Papers**



**500%  
Refund**



**ATTEMPT FREE MOCK NOW**

Q.4 Select the INCORRECTLY spelt word.

- Ans ☒ 1. Calendr  
☐ 2. Conscientious  
☐ 3. Colleague  
☐ 4. Conspicuous

Question ID : 264330143154  
Status : Answered  
Chosen Option : 1

Q.5 Select the option that expresses the given sentence in active voice.  
By whom was this poem written?

- Ans ☐ 1. Who had wrote this poem?  
☐ 2. Who has written this poem?  
☐ 3. Who writes this poem?  
☒ 4. Who wrote this poem?

Question ID : 264330144831  
Status : Answered  
Chosen Option : 4

Q.6 Select the most appropriate idiom for the underlined segment in the following sentence.

Everything in the mansion was in great confusion after the robbery.

- Ans ☐ 1. Pick holes  
☒ 2. Pell-mell  
☐ 3. Turn over a new leaf  
☐ 4. Damp squib

Question ID : 264330149549  
Status : Answered  
Chosen Option : 2

Q.7 Select the most appropriate option that can substitute the underlined word in the following sentence. If there is no need to substitute it, select 'No substitution required'.

The students were restored to complete the assignment by Friday.

- Ans ☐ 1. declared  
☒ 2. expected  
☐ 3. designed  
☐ 4. No substitution required

Question ID : 264330143927  
Status : Answered  
Chosen Option : 2

Q.8 Select the INCORRECTLY spelt word.

There was a sudden esklation of violent acts which led to the starting of the second world war.

Ans ☒ 1. Esklation

☐ 2. Starting

☐ 3. Violent

☐ 4. Sudden

Question ID : 264330144131

Status : Answered

Chosen Option : 1

Q.9 Parts of a sentence are given below in jumbled order. Arrange the parts in the correct order to form a meaningful sentence.

P. a man in a maroon colour flannel shirt

Q. rounded a corner and walked into the middle of the main street of Yellow Sky

R. which had been purchased for purposes of decoration

S. and made principally by some Jewish women on the East side of New York

Ans ☐ 1. PRQS

☒ 2. PRSQ

☐ 3. PSRQ

☐ 4. PQRS

Question ID : 264330149713

Status : Answered

Chosen Option : 2

Q.10 Select the most appropriate synonym of the underlined word.  
He wore a bizarre outfit for the party.

Ans ☐ 1. Normal

☐ 2. Usual

☒ 3. Weird

☐ 4. Familiar

Question ID : 264330149886

Status : Answered

Chosen Option : 3

Q.11 Select the most appropriate synonym of the underlined word in the given sentence.

She detests capsicum so much that she would prefer going empty stomach.

Ans ☐ 1. prompts

☐ 2. marvels

☐ 3. rebels

☒ 4. loathes

Question ID : 264330144244

Status : Answered

Chosen Option : 4

Q.12 Select the most appropriate idiom for the underlined words in the given sentence.

He was alone and knew the dangers ahead during his journey, but he tried to keep up his confidence.

- Ans ☒ 1. whistled in the dark  
☒ 2. made a sterner stuff  
☒ 3. stepped up his game  
☒ 4. wouldn't be caught dead

Question ID : 264330144261  
 Status : Answered  
 Chosen Option : 1

Q.13 Select the most appropriate synonym of the given word.

Timid

- Ans ☒ 1. Magical  
☒ 2. Honest  
☒ 3. Fearless  
☒ 4. Nervous

Question ID : 264330143168  
 Status : Answered  
 Chosen Option : 4

Q.14 Select the most appropriate ANTONYM of the word given in brackets to fill in the blank.

This route cannot get more \_\_\_\_\_ (simplified) than it already is.

- Ans ☒ 1. uniform  
☒ 2. convoluted  
☒ 3. homogenous  
☒ 4. unvaried

Question ID : 264330144277  
 Status : Answered  
 Chosen Option : 2

Q.15 Select the option that can be used as a one-word substitute for the given group of words.

A particular form of a language which is peculiar to a specific region or social group.

- Ans ☒ 1. Singular  
☒ 2. Slang  
☒ 3. Dialect  
☒ 4. Referendum

Question ID : 264330149847  
 Status : Answered  
 Chosen Option : 3

Q.16 Select the most appropriate option that can substitute the underlined words in the given sentence.

Varun is handsome than his brother.

- Ans ☒ 1. much handsome to  
☒ 2. most handsome than  
☒ 3. more handsome than  
☒ 4. more handsome to

Question ID : 264330142564  
Status : Answered  
Chosen Option : 3

Q.17 Select the most appropriate option that can substitute the underlined segment in the given sentence.

The GDP of the country has growth rapidly since independence.

- Ans ☒ 1. had been grow rapidly  
☒ 2. has grown rapidly  
☒ 3. have grown been rapidly  
☒ 4. had grow rapidly

Question ID : 264330144096  
Status : Answered  
Chosen Option : 2

Q.18 Select the most appropriate option that expresses the given sentence in active voice.  
The letter was written by the author and mailed to the publisher.

- Ans ☒ 1. The letter was written and mailed to the publisher by the author.  
☒ 2. The author wrote the letter and mailed it to the publisher.  
☒ 3. The publisher received the letter written by the author.  
☒ 4. The letter was being written by the author and mailed to the publisher.

Question ID : 264330144189  
Status : Answered  
Chosen Option : 2

Q.19 Select the most appropriate synonym of the given word.

Proposal

- Ans ☒ 1. Filling  
☒ 2. Scheme  
☒ 3. Refusal  
☒ 4. Addition

Question ID : 264330144885  
Status : Answered  
Chosen Option : 2

**Q.20** Select the most appropriate option that can substitute the underlined segment in the given sentence.  
The politician used a/an mild and indirect word to describe the controversial policy, in order to soften the blow.

- Ans**
- ☐ 1. oxymoron
  - ☐ 2. metaphor
  - ☒ 3. euphemism
  - ☐ 4. hyperbole

Question ID : 264330143140

Status : Answered

Chosen Option : 3

### Comprehension:

In the following passage, some words have been deleted. Read the passage carefully and select the most appropriate option to fill in each blank.

India will host an international summit on Buddhism here on April 20 and 21. Delegates from 30 countries will participate, a notable exception (1) \_\_\_\_\_ China. Tibetan spiritual leader, the Dalai Lama, is also unlikely to attend the two-day conclave.

The maiden conference being organised by the Union Culture Ministry and the International Buddhist Confederation will discuss (2) \_\_\_\_\_ global issues through a Buddhist perspective.

Over 170 delegates from countries such as Mexico, Cambodia, Laos, Thailand and Japan and 150 from India will participate in the summit to be held in the national capital. The delegates (3) \_\_\_\_\_ prominent scholars, monks, diplomats and members of Buddhist organisations across the globe. The largest number of delegates are from Sri Lanka (20) and Vietnam (30).

Abhijit Haldar, Director General of International Buddhist Confederation, said that while no delegate had been confirmed from China, there would be two participants from Taiwan.

"The invitations (4) \_\_\_\_\_ sent to various Buddhist institutions and not to governments,"

Mr. Haldar added. He also mentioned that the Dalai Lama (5) \_\_\_\_\_ not attend the event due to health issues.

### SubQuestion No : 21

**Q.21** Select the most appropriate option to fill in blank number 1.

- Ans**
- ☐ 1. been
  - ☒ 2. being
  - ☐ 3. be
  - ☐ 4. are

Question ID : 264330149699

Status : Answered

Chosen Option : 2

### Comprehension:

In the following passage, some words have been deleted. Read the passage carefully and select the most appropriate option to fill in each blank.

India will host an international summit on Buddhism here on April 20 and 21. Delegates from 30 countries will participate, a notable exception (1) \_\_\_\_\_ China. Tibetan spiritual leader, the Dalai Lama, is also unlikely to attend the two-day conclave.

The maiden conference being organised by the Union Culture Ministry and the International Buddhist Confederation will discuss (2) \_\_\_\_\_ global issues through a Buddhist perspective.

Over 170 delegates from countries such as Mexico, Cambodia, Laos, Thailand and Japan and 150 from India will participate in the summit to be held in the national capital. The delegates (3) \_\_\_\_\_ prominent scholars, monks, diplomats and members of Buddhist organisations across the globe. The largest number of delegates are from Sri Lanka (20) and Vietnam (30).

Abhijit Haldar, Director General of International Buddhist Confederation, said that while no delegate had been confirmed from China, there would be two participants from Taiwan.

"The invitations (4) \_\_\_\_\_ sent to various Buddhist institutions and not to governments," Mr. Haldar added. He also mentioned that the Dalai Lama (5) \_\_\_\_\_ not attend the event due to health issues.

### SubQuestion No : 22

Q.22 Select the most appropriate option to fill in blank number 2.

Ans ☒ 1. classical

☒ 2. contemporary

☒ 3. old

☒ 4. ancient

Question ID : 264330149700

Status : Answered

Chosen Option : 2

### Comprehension:

In the following passage, some words have been deleted. Read the passage carefully and select the most appropriate option to fill in each blank.

India will host an international summit on Buddhism here on April 20 and 21. Delegates from 30 countries will participate, a notable exception (1) \_\_\_\_\_ China. Tibetan spiritual leader, the Dalai Lama, is also unlikely to attend the two-day conclave.

The maiden conference being organised by the Union Culture Ministry and the International Buddhist Confederation will discuss (2) \_\_\_\_\_ global issues through a Buddhist perspective.

Over 170 delegates from countries such as Mexico, Cambodia, Laos, Thailand and Japan and 150 from India will participate in the summit to be held in the national capital. The delegates (3) \_\_\_\_\_ prominent scholars, monks, diplomats and members of Buddhist organisations across the globe. The largest number of delegates are from Sri Lanka (20) and Vietnam (30).

Abhijit Haldar, Director General of International Buddhist Confederation, said that while no delegate had been confirmed from China, there would be two participants from Taiwan.

"The invitations (4) \_\_\_\_\_ sent to various Buddhist institutions and not to governments," Mr. Haldar added. He also mentioned that the Dalai Lama (5) \_\_\_\_\_ not attend the event due to health issues.

### SubQuestion No : 23

Q.23 Select the most appropriate option to fill in blank number 3.

Ans ☒ 1. included

☒ 2. include

☒ 3. including

☒ 4. includes

Question ID : 264330149701

Status : Answered

Chosen Option : 2



### Comprehension:

In the following passage, some words have been deleted. Read the passage carefully and select the most appropriate option to fill in each blank.

India will host an international summit on Buddhism here on April 20 and 21. Delegates from 30 countries will participate, a notable exception (1) \_\_\_\_\_ China. Tibetan spiritual leader, the Dalai Lama, is also unlikely to attend the two-day conclave.

The maiden conference being organised by the Union Culture Ministry and the International Buddhist Confederation will discuss (2) \_\_\_\_\_ global issues through a Buddhist perspective.

Over 170 delegates from countries such as Mexico, Cambodia, Laos, Thailand and Japan and 150 from India will participate in the summit to be held in the national capital. The delegates (3) \_\_\_\_\_ prominent scholars, monks, diplomats and members of Buddhist organisations across the globe. The largest number of delegates are from Sri Lanka (20) and Vietnam (30).

Abhijit Haldar, Director General of International Buddhist Confederation, said that while no delegate had been confirmed from China, there would be two participants from Taiwan.

"The invitations (4) \_\_\_\_\_ sent to various Buddhist institutions and not to governments," Mr. Haldar added. He also mentioned that the Dalai Lama (5) \_\_\_\_\_ not attend the event due to health issues.

### SubQuestion No : 24

Q.24 Select the most appropriate option to fill in blank number 4.

Ans ☒ 1. had

☒ 2. were

☒ 3. has

☒ 4. was

Question ID : 264330149702

Status : Answered

Chosen Option : 2

### Comprehension:

In the following passage, some words have been deleted. Read the passage carefully and select the most appropriate option to fill in each blank.

India will host an international summit on Buddhism here on April 20 and 21. Delegates from 30 countries will participate, a notable exception (1) \_\_\_\_\_ China. Tibetan spiritual leader, the Dalai Lama, is also unlikely to attend the two-day conclave.

The maiden conference being organised by the Union Culture Ministry and the International Buddhist Confederation will discuss (2) \_\_\_\_\_ global issues through a Buddhist perspective.

Over 170 delegates from countries such as Mexico, Cambodia, Laos, Thailand and Japan and 150 from India will participate in the summit to be held in the national capital. The delegates (3) \_\_\_\_\_ prominent scholars, monks, diplomats and members of Buddhist organisations across the globe. The largest number of delegates are from Sri Lanka (20) and Vietnam (30).

Abhijit Haldar, Director General of International Buddhist Confederation, said that while no delegate had been confirmed from China, there would be two participants from Taiwan.

"The invitations (4) \_\_\_\_\_ sent to various Buddhist institutions and not to governments," Mr. Haldar added. He also mentioned that the Dalai Lama (5) \_\_\_\_\_ not attend the event due to health issues.

### SubQuestion No : 25

Q.25 Select the most appropriate option to fill in blank number 5.

Ans ☒ 1. ought to

☒ 2. might

☒ 3. used to

☒ 4. dare

Question ID : 264330149703

Status : Answered

Chosen Option : 2

**Q.1** What should come in place of ? in the given series based on the English alphabetical order?

QCT NHP KML HRH ?

- Ans**
- ✓ 1. EWD
  - ✗ 2. IVD
  - ✗ 3. FVF
  - ✗ 4. JWE

Question ID : 264330146612  
Status : Answered  
Chosen Option : 1

**Q.2** In a certain code language, 'clothes are dirty' is written as 'kq pl ns' and 'wear your clothes' is written as 'ns mk jl'. How is 'clothes' written in the given language?

- Ans**
- ✓ 1. ns
  - ✗ 2. kq
  - ✗ 3. jl
  - ✗ 4. pl

Question ID : 264330147190  
Status : Answered  
Chosen Option : 1

**Q.3** In a certain code language,

P – Q means 'P is the wife of Q',  
P ÷ Q means 'P is the husband of Q',  
P × Q means 'P is the son of Q',  
P + Q means 'P is the daughter of Q'.

Based on the above, if  $H - I \times J \div K + G$ , then how is I related to G?

- Ans**
- ✓ 1. Daughter's son
  - ✗ 2. Mother's father
  - ✗ 3. Mother's mother
  - ✗ 4. Son

Question ID : 264330147421  
Status : Answered  
Chosen Option : 1

**Q.4** In a certain code language, 'KNEW' is coded as '1493' and 'NECK' is coded as '8319'. What is the code for 'C' in the given code language?

- Ans**
- ✗ 1. 9
  - ✓ 2. 8
  - ✗ 3. 1
  - ✗ 4. 3

Question ID : 264330146584  
Status : Answered  
Chosen Option : 2

**Q.5** Select the set in which the numbers are related in the same way as are the numbers of the following sets.

(NOTE: Operations should be performed on the whole numbers, without breaking down the numbers into its constituent digits. E.g. 13 – Operations on 13 such as adding / subtracting / multiplying etc. to 13 can be performed. Breaking down 13 into 1 and 3 and then performing mathematical operations on 1 and 3 is not allowed.)

(122, 136, 24)

(222, 248, 36)

**Ans** ✗ 1. (301, 367, 78)

✗ 2. (189, 213, 32)

✗ 3. (145, 244, 89)

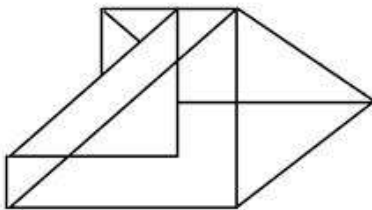
✓ 4. (212, 258, 56)

Question ID : 264330147015

Status : Not Answered

Chosen Option : --

**Q.6** How many triangles are there in the given figure?



**Ans** ✓ 1. 11

✗ 2. 9

✗ 3. 10

✗ 4. 8

Question ID : 264330146919

Status : Answered

Chosen Option : 3

**Q.7** Select the combination of letters that when sequentially placed in the blanks of the given series will complete the series.

BC\_F GH\_K L\_NP \_RSU VWX\_

**Ans** ✓ 1. DIMQZ

✗ 2. EJOQY

✗ 3. EJMQR

✗ 4. DJOQY

Question ID : 264330146870

Status : Answered

Chosen Option : 1

**Q.8** Read the given statements and conclusions carefully. You have to take the given statements to be true even if they seem to be at variance from commonly known facts. You have to decide which conclusion/s logically follow/s from the given statements.

Statements:

All triangles are squares.

Some squares are circles.

Some triangles are pyramids.

Conclusion (I): Some circles are pyramids.

Conclusion (II): All pyramids are triangles.

**Ans** ☒ 1. Only conclusion (I) is true.

☒ 2. Both conclusions (I) and (II) are true.

☒ 3. Neither conclusion (I) nor (II) is true.

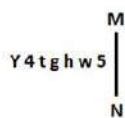
☒ 4. Only conclusion (II) is true.

Question ID : 264330150998

Status : Answered

Chosen Option : 3

**Q.9** Select the correct mirror image of the given figure when the mirror is placed at MN as shown below.



**Ans** ☒ 1. 5w h g t 4 Y

☒ 2. 5w h g t 4 Y

☒ 3. 5w h g t 4 Y

☒ 4. 5w h g t 4 Y

Question ID : 264330146685

Status : Answered

Chosen Option : 1

**Q.10** Based on the alphabetical order, three of the following four letter-clusters are alike in a certain way and thus form a group. Which of the following does NOT belong to that group?

**Ans** ☒ 1. TVY

☒ 2. QSV

☒ 3. YAC

☒ 4. CEH

Question ID : 264330146958

Status : Answered

Chosen Option : 3

**Q.11** K is married to L. M is the son of L. N is the brother of M. O is the daughter of M and married to P. Q is the mother of M's mother who has only one daughter L. R is married to Q. How is R related to K?

**Ans** ☒ 1. Father

☒ 2. Wife's father

☒ 3. Wife's mother

☒ 4. Mother's brother

Question ID : 264330150847

Status : Answered

Chosen Option : 2

**Q.12** Which number from among the given options can replace the question mark (?) in the following series?

49, ?, 82, 101, 115, 134

- Ans** ☒ 1. 68  
☒ 2. 71  
☒ 3. 69  
☒ 4. 62

Question ID : 264330146989

Status : Answered

Chosen Option : 1

**Q.13** In the following number-pairs, the second number is obtained by applying certain mathematical operations to the first number. Select the set in which the numbers are related in the same way as are the numbers of the following sets.

(NOTE: Operations should be performed on the whole numbers, without breaking down the numbers into its constituent digits. E.g. 13 – Operations on 13 such as adding / subtracting / multiplying etc. to 13 can be performed. Breaking down 13 into 1 and 3 and then performing mathematical operations on 1 and 3 is not allowed.)

(17, 280)

(22, 475)

- Ans** ☒ 1. (21, 450)  
☒ 2. (26, 485)  
☒ 3. (13, 160)  
☒ 4. (12, 137)

Question ID : 264330147005

Status : Answered

Chosen Option : 3

**Q.14** The position of how many letters will remain unchanged if each of the letter in the word 'BITUMEN' is arranged in alphabetical order?

- Ans** ☒ 1. One  
☒ 2. Two  
☒ 3. Four  
☒ 4. Three

Question ID : 264330147078

Status : Answered

Chosen Option : 1

**Q.15** If 'A' stands for '+', 'B' stands for 'x', 'C' stands for '+' and 'D' stands for '-', what will come in place of the question mark '?' in the following equation?

468 A 52 B 34 D 126 C 83 = ?

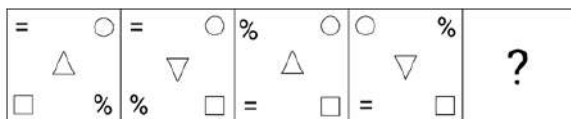
- Ans** ☒ 1. 263  
☒ 2. 349  
☒ 3. 363  
☒ 4. 186

Question ID : 264330147331

Status : Answered

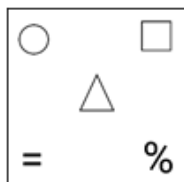
Chosen Option : 1

Q.16 Identify the figure given in the options which when put in place of ? will logically complete the series.

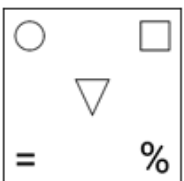


Ans

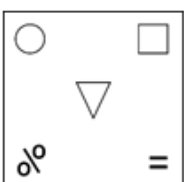
✓ 1.



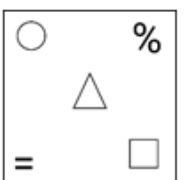
✗ 2.



✗ 3.



✗ 4.

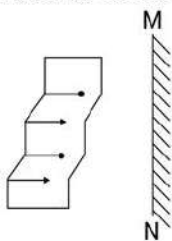


Question ID : 264330146307

Status : Answered

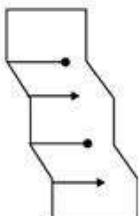
Chosen Option : 1

Q.17 Select the correct mirror image of the given figure when the mirror is placed at MN as shown.

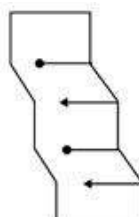


Ans

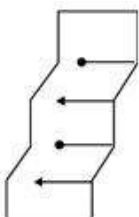
✗ 1.



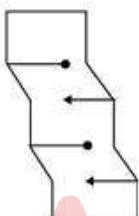
✓ 2.



✗ 3.



✗ 4.



Question ID : 264330146499  
Status : Answered  
Chosen Option : 2

Q.18 Which of the following numbers will replace the question mark (?) in the given series to make it logically complete?

12, ?, 68, 194, 572, 1706

Ans

✗ 1. 32

✗ 2. 36

✓ 3. 26

✗ 4. 20

Question ID : 264330146752  
Status : Not Answered  
Chosen Option : --



**Q.19** Read the given statements and conclusions carefully. You have to take the given statements to be true even if they seem to be at variance from commonly known facts. You have to decide which conclusion/s logically follow/s from the given statements.

Statements:

All bottles are medicines.

Some doctors are bottles.

Some medicines are capsules.

Conclusion (I): Some doctors are medicines.

Conclusion (II): Some bottles are capsules.

Ans

- ✓ 1. Only conclusion (I) is true.  
 ✗ 2. Only conclusion (II) is true.  
 ✗ 3. Both conclusions (I) and (II) are true.  
 ✗ 4. Neither conclusion (I) nor (II) is true.

Question ID : 264330151000

Status : Answered

Chosen Option : 1

**Q.20** CARROT is related to TRIIFK in a certain way based on the English alphabetical order. In the same way, QUILL is related to HLZCC. To which of the following is PIEGION related, following the same logic?

Ans

- ✗ 1. GZVXZEE  
 ✗ 2. GAVXZFE  
 ✓ 3. GZVXZFE  
 ✗ 4. GZVXZFF

Question ID : 264330146947

Status : Answered

Chosen Option : 3

**Q.21** If 'A' stands for '+', 'B' stands for '×', 'C' stands for '+' and 'D' stands for '-', what will come in place of the question mark (?) in the following equation?

$$79 \ C \ 15 \ A \ 5 \ B \ 3 \ D \ 11 = ?$$

Ans

- ✗ 1. 71  
 ✗ 2. 83  
 ✓ 3. 77  
 ✗ 4. 85

Question ID : 264330146433

Status : Answered

Chosen Option : 3

**Q.22** What will come in place of the question mark (?) in the following equation if '+' and '×' are interchanged and '-' and '+' are interchanged?

$$20 - 5 + 2 + 4 \times 12 = ?$$

Ans

- ✗ 1. 4  
 ✓ 2. 8  
 ✗ 3. 12  
 ✗ 4. 0

Question ID : 264330151032

Status : Answered

Chosen Option : 2



Q.23 What should come in place of ? in the given series?

12 15 20 27 38 ?

- Ans
- ☐ 1. 52
  - ☐ 2. 47
  - ☒ 3. 51
  - ☐ 4. 49

Question ID : 264330152026  
Status : Answered  
Chosen Option : 3

Q.24 Select the word-pair that does NOT represent a similar relationship to the one expressed in the pair of words given below.  
(The words must be considered as meaningful English words and must not be related to each other based on the number of letters/number of consonants/vowels in the word.)  
Absence : Existence

- Ans
- ☐ 1. Blunt : Sharp
  - ☐ 2. Calm : Furious
  - ☐ 3. Abundant : Lacking
  - ☒ 4. Careful : Cautious

Question ID : 264330150894  
Status : Answered  
Chosen Option : 3

Q.25 If 14 March 2007 is Wednesday, then what will be the day of the week on 12 April 2013?

- Ans
- ☐ 1. Tuesday
  - ☒ 2. Friday
  - ☐ 3. Monday
  - ☐ 4. Sunday

Question ID : 264330146640  
Status : Answered  
Chosen Option : 1

Section : Quantitative Aptitude

Q.1 If  $\cos \theta = \frac{4}{5}$ , find the value of  $\cot \theta + \tan \theta$ .

- Ans
- ☐ 1.  $\frac{12}{25}$
  - ☒ 2.  $\frac{25}{12}$
  - ☐ 3.  $\frac{27}{12}$
  - ☐ 4.  $\frac{12}{27}$

Question ID : 264330148213  
Status : Answered  
Chosen Option : 2

Q.2 Simplify the expression:

$$143 \times 143 + 143 \times 139 + 139 \times 139$$

$$143 \times 143 \times 143 - 139 \times 139 \times 139$$

Ans

✗ 1.  $\frac{1}{2}$

✗ 2. 282

✓ 3.  $\frac{1}{4}$

✗ 4. 4

Question ID : 264330150564

Status : Answered

Chosen Option : 4

Q.3 If the marked price of a camera is ₹28,500 and a discount of 12% is given on it, then what is the selling price (in ₹) of the camera?

Ans

✗ 1. 25,270

✓ 2. 25,080

✗ 3. 26,000

✗ 4. 22,753

Question ID : 264330148038

Status : Answered

Chosen Option : 2

Q.4 A shopkeeper gives a discount of 15% on the marked price. If the selling price is ₹19,040, then the discount on it will be:

Ans

✓ 1. ₹3,360

✗ 2. ₹3,850

✗ 3. ₹3,260

✗ 4. ₹3,600

Question ID : 264330147921

Status : Answered

Chosen Option : 1

Q.5 Shailja allows a discount of 10% to her customer and still gains 20% on the sale of a cosmetic product. What is the marked price (in ₹) of the cosmetic product having cost price ₹450?

Ans

✗ 1. 580

✗ 2. 560

✓ 3. 600

✗ 4. 540

Question ID : 264330147898

Status : Answered

Chosen Option : 3

**Q.6** A man borrows ₹4,000 from a bank at 10% per annum simple interest and clears the debt in three years. If the installments paid at the end of the first, and second year to clear the debt are ₹1,500, and ₹2,500, respectively, what amount (in ₹) should be paid at the end of the third year to clear the debt?

- Ans**
- ☒ 1. 700
  - ☒ 2. 650
  - ☒ 3. 500
  - ☒ 4. 550

Question ID : 264330151419  
Status : Not Answered  
Chosen Option : --

**Q.7** The fourth proportional to 6, 8 and 12 is:

- Ans**
- ☒ 1. 15
  - ☒ 2. 12
  - ☒ 3. 18
  - ☒ 4. 16

Question ID : 264330147930  
Status : Answered  
Chosen Option : 4

**Q.8** Find the area of an equilateral triangle whose sides are 12 cm.

- Ans**
- ☒ 1.  $38\sqrt{3} \text{ cm}^2$
  - ☒ 2.  $35\sqrt{3} \text{ cm}^2$
  - ☒ 3.  $34\sqrt{3} \text{ cm}^2$
  - ☒ 4.  $36\sqrt{3} \text{ cm}^2$

Question ID : 264330148207  
Status : Answered  
Chosen Option : 4

**Q.9** Three men or five women can do a work in 57 days. In how many days can nine men and four women do that same work?

- Ans**
- ☒ 1. 16 days
  - ☒ 2. 18 days
  - ☒ 3. 14 days
  - ☒ 4. 15 days

Question ID : 264330148250  
Status : Answered  
Chosen Option : 4

**Q.10** The table shows the production of different types of P, Q, R and S motorcycles (in thousand) in four years.

| Motorcycles | YEAR |      |      |      |
|-------------|------|------|------|------|
|             | 2018 | 2019 | 2020 | 2021 |
| P           | 92   | 98   | 102  | 128  |
| Q           | 42   | 48   | 58   | 97   |
| R           | 65   | 37   | 50   | 28   |
| S           | 32   | 35   | 27   | 28   |

If the data related to the production of type R motorcycles is represented by Pie-Chart, then the central angle of the sector representing the production of motorcycles in 2020 will be:

- Ans
- ☐ 1.  $108^\circ$
  - ☐ 2.  $120^\circ$
  - ☒ 3.  $100^\circ$
  - ☐ 4.  $90^\circ$

Question ID : 264330150758

Status : Answered

Chosen Option : 3

**Q.11** A mixture contains liquid A and B in the ratio 5 : 3, respectively. If 3 litres of liquid B is added to it, the ratio of liquid A to liquid B becomes 7 : 6. What is the quantity of liquid A in the mixture?

- Ans
- ☐ 1.  $7\frac{2}{3}$  litres
  - ☐ 2.  $9\frac{1}{3}$  litres
  - ☒ 3.  $11\frac{2}{3}$  litres
  - ☐ 4.  $13\frac{1}{3}$  litres

Question ID : 264330147820

Status : Answered

Chosen Option : 3

**Q.12** If  $\sin \theta \cos \theta = \frac{1}{\sqrt{3}}$  then the value of  $(\sin^4 \theta + \cos^4 \theta)$  is:

- Ans
- ☐ 1. 1
  - ☐ 2.  $\frac{5}{3}$
  - ☐ 3.  $\frac{2}{3}$
  - ☒ 4.  $\frac{1}{3}$

Question ID : 264330148057

Status : Answered

Chosen Option : 4

**Q.13** It is given that  $\triangle ABC \cong \triangle FDE$  and  $AB = 5$  cm,  $\angle B = 40^\circ$  and  $\angle A = 80^\circ$ . Then which of the following is true?

- Ans
- ☒ 1.  $DE = 5$  cm,  $\angle D = 40^\circ$
  - ☒ 2.  $DE = 5$  cm,  $\angle E = 60^\circ$
  - ☒ 3.  $DF = 5$  cm,  $\angle F = 60^\circ$
  - ☒ 4.  $DF = 5$  cm,  $\angle E = 60^\circ$

Question ID : 264330146530  
Status : Answered  
Chosen Option : 4

**Q.14** Simplify the given expression.

$$\sqrt{\frac{1+\cos P}{1-\cos P}}$$

- Ans
- ☒ 1.  $\operatorname{cosec} P - \cot P$
  - ☒ 2.  $\sec P - \tan P$
  - ☒ 3.  $\sec P + \tan P$
  - ☒ 4.  $\operatorname{cosec} P + \cot P$

Question ID : 264330147915  
Status : Answered  
Chosen Option : 4

**Q.15** If three angles of a triangle are  $(2y + 40^\circ)$ ,  $(5y - 60^\circ)$ , and  $(3y - 80^\circ)$ , then what is the value of  $y$ ?

- Ans
- ☒ 1.  $30^\circ$
  - ☒ 2.  $24^\circ$
  - ☒ 3.  $28^\circ$
  - ☒ 4.  $26^\circ$

Question ID : 264330147911  
Status : Answered  
Chosen Option : 3

**Q.16** Two circles touch each other internally. Their radii are 3 cm and 4 cm. What is the length of the biggest chord of the circle with radii 4 cm which is outside the inner circle?

- Ans
- ☒ 1.  $5\sqrt{3}$  cm
  - ☒ 2.  $6\sqrt{3}$  cm
  - ☒ 3.  $4\sqrt{3}$  cm
  - ☒ 4.  $2\sqrt{3}$  cm

Question ID : 264330148021  
Status : Not Answered  
Chosen Option : --

**Q.17** In a circular race of 1500 m. Anil and Bilal start from the same point and at the same time with speeds of 36 km/h and 54 km/h respectively. When will they meet again for the first time on the track when they are running in the same direction?

- Ans**
- ✓ 1. 300 sec
  - ✗ 2. 250 sec
  - ✗ 3. 240 sec
  - ✗ 4. 320 sec

Question ID : 264330148751  
Status : Answered  
Chosen Option : 1

**Q.18** A solid sphere of radius 4 cm is melted and cast into the shape of a solid cone of height 4 cm. The radius of the base of the cone is \_\_\_\_\_.

- Ans**
- ✓ 1. 8 cm
  - ✗ 2. 4 cm
  - ✗ 3. 6 cm
  - ✗ 4. 10 cm

Question ID : 264330147939  
Status : Answered  
Chosen Option : 1

**Q.19** A person bought two goods for ₹19,500. He sold one at a loss of 20% and the other at a profit of 15%. If the selling price of each goods is the same, find the cost price of goods sold at profit.

- Ans**
- ✗ 1. ₹11,475
  - ✗ 2. ₹9,750
  - ✗ 3. ₹11,500
  - ✓ 4. ₹8,000

Question ID : 264330148416  
Status : Answered  
Chosen Option : 4

**Q.20** Divide ₹ 1488 among X, Y and Z. If the shares are in the ratio X: Y = 4:5, Y: Z = 7:6, then find out the share of Z.

- Ans**
- ✗ 1. ₹ 460
  - ✗ 2. ₹ 450
  - ✗ 3. ₹ 470
  - ✓ 4. ₹ 480

Question ID : 264330150823  
Status : Answered  
Chosen Option : 4

**Q.21** 65% of Samita's income is equal to 91% of Bhairav's income. If Samita's income was ₹1,500 more than what it is and Bhairav's income was ₹500 more than what it is, the ratio of the incomes of Samita and Bhairav would have been 3 : 2. What is the actual combined income (in ₹) of Samita and Bhairav?

- Ans**
- ☒ 1. 18,500
  - ☒ 2. 17,500
  - ☒ 3. 20,000
  - ☒ 4. 18,000

Question ID : 264330146782

Status : Answered

Chosen Option : 4

**Q.22** Study the given table and answer the question that follows.

The table shows the production of different varieties of rice (in quintals) from 2018-2021.

| Variety | Year |      |      |      |
|---------|------|------|------|------|
|         | 2018 | 2019 | 2020 | 2021 |
| A       | 20   | 35   | 55   | 67   |
| B       | 45   | 45   | 89   | 87   |
| C       | 67   | 89   | 67   | 98   |
| D       | 34   | 65   | 76   | 78   |

In which year was rice of variety C produced the maximum?

- Ans**
- ☒ 1. 2018
  - ☒ 2. 2021
  - ☒ 3. 2020
  - ☒ 4. 2019

Question ID : 264330147832

Status : Answered

Chosen Option : 2

**Q.23** Simplify the given expression and find the value for  $x = -1$ .

$$\frac{10x^2 + 5x + 2xy + y}{5x + y}$$

- Ans**
- ☒ 1. -1
  - ☒ 2. 0
  - ☒ 3. 1
  - ☒ 4. 2

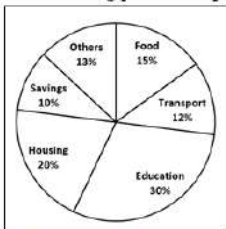
Question ID : 264330148777

Status : Answered

Chosen Option : 1



Q.24 The following pie chart represents the break-up of Piyush's monthly expenses.



If Piyush spent ₹3,780 more on education than he spent on housing, then find his monthly expenses (in ₹).

- Ans
- ✗ 1. ₹7,560
  - ✗ 2. ₹18,900
  - ✓ 3. ₹37,800
  - ✗ 4. ₹12,600

Question ID : 264330150946  
Status : Answered  
Chosen Option : 3

Q.25 Simplify the expression:

$$\frac{a+b}{a-b} \div \frac{(a+b)^2}{(a^2-b^2)}$$

- Ans
- ✗ 1. -1
  - ✗ 2. (a + b)
  - ✗ 3. 0
  - ✓ 4. 1

Question ID : 264330150561  
Status : Answered  
Chosen Option : 4

Section : General Awareness

Q.1 Which of the following is NOT an approach for measuring unemployment in India?

- Ans
- ✗ 1. Weekly Status Approach
  - ✓ 2. Monthly Status Approach
  - ✗ 3. Daily Status Approach
  - ✗ 4. Usual Status Approach

Question ID : 264330149379  
Status : Answered  
Chosen Option : 4



Q.2 Saavaj is the official mascot of which of the following events?

- Ans
- ☐ 1. Khelo India Youth Games 2023
  - ☐ 2. FIH Men's World Cup Hockey 2023
  - ☐ 3. Commonwealth Games
  - ☒ 4. 36<sup>th</sup> National Games of India

Question ID : 264330145986  
Status : Answered  
Chosen Option : 1

Q.3 In which of the following regions in India are there high-grade iron ore deposits?

- Ans
- ☐ 1. Western Rajasthan
  - ☐ 2. Southern Punjab
  - ☐ 3. Eastern Uttar Pradesh
  - ☒ 4. Northern Odisha

Question ID : 264330150240  
Status : Answered  
Chosen Option : 4

Q.4 The deficiency of Vitamin A causes:

- Ans
- ☐ 1. beriberi
  - ☐ 2. scurvy
  - ☐ 3. rickets
  - ☒ 4. night blindness

Question ID : 264330145832  
Status : Answered  
Chosen Option : 4

Q.5 विजयनगर साम्राज्य के सबसे प्रसिद्ध शासक कृष्णदेव राय का संबंध किस राजवंश से था?

- Ans
- ☐ 1. अराविंदु
  - ☐ 2. सुलुव
  - ☒ 3. तुलुव
  - ☐ 4. संगम

Question ID : 264330150210  
Status : Answered  
Chosen Option : 3

**Q.6** In 2022, what time did Chahat Arora wrap up the 100 m breaststroke race at the FINA World Swimming Championships in Melbourne, Australia?

- Ans**
- ☒ 1. 17:6.17s
  - ☒ 2. 1:13.13s
  - ☒ 3. 1:12.10s
  - ☒ 4. 10:10.16s

Question ID : 264330149935  
Status : Answered  
Chosen Option : 3

**Q.7** What is the full form of MEDP?

- Ans**
- ☒ 1. Micro Enterprise Development Programme
  - ☒ 2. Medium Enterprise Development Programme
  - ☒ 3. Microfinance Entity Development Programme
  - ☒ 4. Micro Enterprise District Project

Question ID : 264330144675  
Status : Answered  
Chosen Option : 1

**Q.8** Bhimsen Joshi belongs to which of the following classical music traditions?

- Ans**
- ☒ 1. Delhi Gharana
  - ☒ 2. Banaras Gharana
  - ☒ 3. Kirana Gharana
  - ☒ 4. Jaipur Gharana

Question ID : 264330148687  
Status : Answered  
Chosen Option : 2

**Q.9** While travelling in a train, one of the travellers started speaking against the Indian freedom struggle and noble ideals of it.

Which of the following Articles mentions the fundamental duties in relation to such circumstances?

- Ans**
- ☒ 1. Article 51A (b)
  - ☒ 2. Article 51A (c)
  - ☒ 3. Article 51A (a)
  - ☒ 4. Article 51A (d)

Question ID : 264330150356  
Status : Answered  
Chosen Option : 3

Q.10 In India, credit creation is done by:

- A) Ministry of Finance
- B) Reserve Bank of India
- C) Commercial Banks

Ans ☒ 1. Only C  
☒ 2. Only B  
☒ 3. All – A, B and C  
☒ 4. Only A

Question ID : 264330145721  
 Status : Answered  
 Chosen Option : 3

Q.11 Who among the following devoted his life for the upliftment of widows and established the Widow Remarriage Association in 1893?

Ans ☒ 1. DK Karve  
☒ 2. Annie Besant  
☒ 3. KC Sen  
☒ 4. BM Malabari

Question ID : 264330152561  
 Status : Answered  
 Chosen Option : 2

Q.12 In diffraction of white light by a prism, which colour of light from VIBGYOR will be bent most?

Ans ☒ 1. Red  
☒ 2. Yellow  
☒ 3. Green  
☒ 4. Violet

Question ID : 264330145815  
 Status : Answered  
 Chosen Option : 4

Q.13

Match list I with list II and choose your answer from the code below.

- | List-I            | List-II                              |
|-------------------|--------------------------------------|
| (a) Habeas corpus | (i) Enquiring into legality of claim |
| (b) Mandamus      | (ii) To command                      |
| (c) Quo warranto  | (iii) To have a body of              |
| (d) Certiorari    | (iv) To be certified                 |

Ans

- ✗ 1. a-i, b-ii, c-iii, d-iv  
 ✗ 2. a-ii, b-i, c-iii, d-iv  
 ✓ 3. a-iii, b-ii, c-i, d-iv  
 ✗ 4. a-iv, b-ii, c-iii, d-i

Question ID : 264330150430

Status : Answered

Chosen Option : 3

Q.14 Name the campaign launched by the Madhya Pradesh government on the occasion of National Girl Child Day on January 24, 2021, under the 'Beti Bachao Beti Padhao' scheme.

Ans

- ✗ 1. Mazi Kanya Bhagyashree Scheme  
 ✗ 2. CBSE Udaan scheme  
 ✗ 3. Balika Samridhi Yojana  
 ✓ 4. PANKH Abhiyan

Question ID : 264330150050

Status : Answered

Chosen Option : 2

Q.15 Lotia is a regional music form of which state?

Ans

- ✗ 1. Odisha  
 ✓ 2. Rajasthan  
 ✗ 3. Assam  
 ✗ 4. Bihar

Question ID : 264330144744

Status : Answered

Chosen Option : 1

Q.16 Which of the following statements is/are FALSE with respect to simple model of the circular flow of economy?

- i. The aggregate consumption is more than the aggregate expenditure.  
 ii. There is government intervention.  
 iii. There are no trade activities with the rest of the world.

Ans

- ✗ 1. Only i and iii  
 ✓ 2. Only i  
 ✗ 3. Only iii  
 ✗ 4. Only ii and iii

Question ID : 264330146123

Status : Answered

Chosen Option : 1

Q.17 Which of the following Indian classical dancers was the recipient of the Padma Vibhushan award of 2003?

- Ans
- ☒ 1. Saswati Sen
  - ☒ 2. Elam Endira Devi
  - ☒ 3. Birju Maharaj
  - ☒ 4. Sonal Mansingh

Question ID : 264330151219  
Status : Answered  
Chosen Option : 2

Q.18 The Physical Quality of Life Index does NOT include which of the following indicators?

- Ans
- ☒ 1. Life expectancy
  - ☒ 2. Gender development index
  - ☒ 3. Infant mortality
  - ☒ 4. Literacy

Question ID : 264330146125  
Status : Answered  
Chosen Option : 2

Q.19 Rajini Gobra and Harni Gobra is the cultural festival of which of the following Indian states?

- Ans
- ☒ 1. Assam
  - ☒ 2. Bihar
  - ☒ 3. Mizoram
  - ☒ 4. West Bengal

Question ID : 264330151322  
Status : Answered  
Chosen Option : 3

Q.20 Who was appointed as the first woman Vice-Chancellor of Jawaharlal Nehru University (JNU), New Delhi?

- Ans
- ☒ 1. Geeta Bhat
  - ☒ 2. Jayati Ghosh
  - ☒ 3. Utsa Patnaik
  - ☒ 4. Santishree Pandit

Question ID : 264330150395  
Status : Answered  
Chosen Option : 2

Q.21 What numerical scale was introduced in 1932 that determined the electronegativity of fluorine to be 4.0?

- Ans
- ☒ 1. Allred-Rochow scale
  - ☒ 2. Mulliken scale
  - ☒ 3. Pauling scale
  - ☒ 4. Jae scale

Question ID : 264330145590  
Status : Not Answered  
Chosen Option : --

Q.22 Which of these is NOT one of the impacts of the green revolution?

Ans ☒ 1.

A loosening of traditional bonds or hereditary relationships between farmers or landowners and agricultural workers.

☒ 2. The rise of a class of 'free' wage labourers.

☒ 3. A shift from payment in cash to payment in kind (grain).

☒ 4.

There was an increase in the use of agricultural labour as cultivation became more intensive.

Question ID : 264330144735

Status : Not Answered

Chosen Option : --

Q.23 Which of the following steps is NOT involved in a Water Cycle?

Ans ☒ 1. Hydration

☒ 2. Condensation

☒ 3. Precipitation

☒ 4. Evaporation

Question ID : 264330145846

Status : Not Answered

Chosen Option : --

Q.24 In which year did Rudranksh Patil win gold in men's 10 m air rifle event in ISSF World Cup?

Ans ☒ 1. 2022

☒ 2. 2020

☒ 3. 2023

☒ 4. 2021

Question ID : 264330146297

Status : Not Answered

Chosen Option : --

Q.25 Which of the following is true about the Indian Desert?

Ans ☒ 1. Bounded to the west by the Aravalli

☒ 2. Lies to the southeast of the Aravali

☒ 3. Lies to the northwest of the Aravali

☒ 4. Bounded to the south by the Aravali

Question ID : 264330149364

Status : Not Answered

Chosen Option : --