

Quiz Date: 6th May 2020

Directions (1-5): Study the following information carefully and answer the questions given below:

Seven persons, P, Q, R, S, T, U and V are going to attend a party but not necessarily in the same order, in seven different months (of the same year) namely January, February, March, June, August, October and December but not necessarily in the same order. Each of them also likes a different fruit namely Banana, Grapes, Papaya, Orange, Mango, Litchi and Apple but not necessarily in the same order. R is going to attend party in a month which has less than 31 days. Only two persons are going to attend party between the month in which R and S attend party. The one who likes Banana is going to attend party immediately before T. Only one person attends party before the one who likes Papaya. Q attends party immediately after the one who likes Papaya. Only three persons attend party between Q and the one who likes Mango. T likes neither Mango nor Papaya. P attends party immediately before T. V likes Apple. The one who likes Grapes attends party in the month, which has less than 31 days. The one who attends party in March does not like Orange.

Q1. Which of the following represents the month in which T attends party?

- (a) January
- (b) March
- (c) October
- (d) December
- (e) June

Q2. Which of the following represents the people who attend party in March and June respectively?

- (a) R, Q
- (b) U, S
- (c) Q, R
- (d) U, R
- (e) V, R

Q3. How many persons attend party between the months in which V and P attend party?

- (a) None
- (b) Three
- (c) Two
- (d) One
- (e) More than three

Q4. As per the given arrangement, V is related to Litchi and U is related to Grapes following a certain pattern, which of the following is Q related to following the same pattern?

- (a) Mango
- (b) Litchi
- (c) Apple
- (d) Papaya
- (e) Banana

Q5. In which of the following month does U attends party?

- (a) January
- (b) March
- (c) October
- (d) December
- (e) None of these

Directions (6-9): Following questions are based on the information given below.

'P + Q' means 'P is daughter of Q'

'P - Q' means 'P is son of Q'

'P ÷ Q' means 'P is mother of Q'

'P × Q' means 'P is the brother of Q'

'P # Q' means 'P is wife of Q'

'P * Q' means 'P is father of Q'

Q6. In the expression $A \times D \div F \# Q \times Z - M$, how is M related to F?

- (a) Granddaughter
- (b) Son in law
- (c) Daughter in law
- (d) Cannot be determined
- (e) None of these

Q7. In the expression $A \# B - M \times R \div S$, how is B related to S?

- (a) daughter in law
- (b) Son in law
- (c) Cousin
- (d) Grandson
- (e) None of these

Q8. In which of the following expression A is the niece of E is definitely true?

- (a) $A \# B - C \times E \div D$
- (b) $A \times D \div F \# E \times B - C$
- (c) $A \times B + C \times E - D$
- (d) $B \times A + C \times E - D$
- (e) None of these

Q9. In which of the following expression D is the mother in law of B is definitely true?

- (a) $A \# B - C \times E \div D$
- (b) $A * B \times C \# D$
- (c) $A \times B + C \times E - D$
- (d) $B \times A + C \times E - D$
- (e) None of these

BANKERS

adda247

Q10. If the expressions ' $M > N \leq O < P$ ', ' $N > Y$ ' and ' $P < Q$ ' are true, which of the following conclusions will be false?

- (a) $N < Q$
- (b) $M > Q$
- (c) $Y < M$
- (d) $O > Y$
- (e) None of these

Directions (11-15): Study the following information carefully and answer the questions given below:

In a certain code language

'Donate Service Space' is written as 'E6 F21 G19',

'Career Home Picture' is written as 'F11 G35 D20',

'Download Business Island' is written as 'F10 H35 H31',

Q11. What is the code for 'Notification'?

- (a) F20
- (b) J15
- (c) L58
- (d) K10
- (e) None of these

Q12. What is the code for 'Insurance'?

- (a) I36
- (b) K15
- (c) F26
- (d) G5
- (e) None of these

Q13. What is the code for 'Supreme Aspirant'?

- (a) L23 F7
- (b) K15 G31
- (c) H11 D17
- (d) G31 H11
- (e) None of these

Q14. What is the code for 'Vocabulary'?

- (a) J38
- (b) F16
- (c) D16
- (d) H9
- (e) None of these

Q15. What is the code for 'Welcome'?

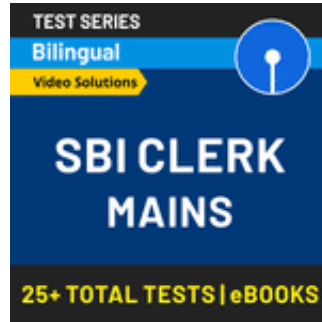
- (a) A16
- (b) G25



BANKERS

adda247

- (c) H19
- (d) K20
- (e) None of these



Solutions

Solutions (1-5):

Sol.

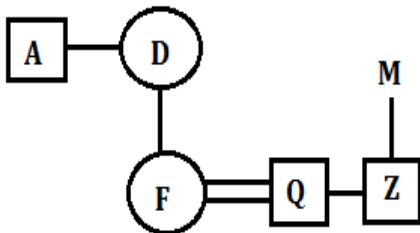
Months	Persons	Fruits
January	V	Apple
February	U	Papaya
March	Q	Litchi
June	R	Grapes
August	P	Banana
October	T	Orange
December	S	Mango

- S1. Ans (c)
- S2. Ans (c)
- S3. Ans (b)
- S4. Ans (e)
- S5. Ans (e)

Solutions (6-9):

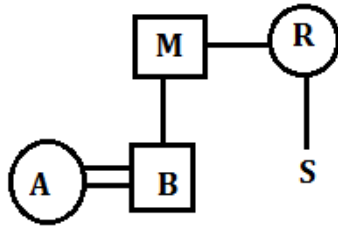
S6. Ans. (d)

Sol.

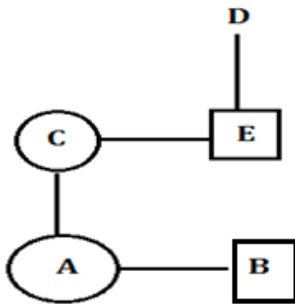


S7. Ans. (c)

Sol.



S8. Ans (d)
Sol.



S9. Ans (e)

S10. Ans.(b)



Solutions (11-15):

In the given code, the first letter of the code represents the alphabet which has the same rank in the alphabetical series as the number of alphabets in the word. The number in the code represents the sum of the ranks of the vowels in the alphabetical series.

(Total number of letters = 4 = D)

HOME → D 20 (O-15 + E-5)

S11. Ans.(c)

S12. Ans.(a)

S13. Ans.(d)

S14. Ans.(a)

S15. Ans.(b)



For any Banking/Insurance exam Assistance, Give a Missed call @ 0114118326

