

## Blood Relation

### What is Blood Relation?

The relation is established between persons by only birth rather than marriage or other sources. Blood relations are the relations that are only made by birth including relations between parents, family, and the persons related to the family. Blood relation is an important section and its questions are asked in almost all exams.

The students have an understanding of family relations hierarchy well by solving the blood relation questions easily. Blood relation questions are asked by forming a chain relationship between the family members. The students must draw a relation flowchart as per the condition given in the question and then easily solve them. Blood relation checks your logical understanding and ability to solve a puzzle. Sometimes students face difficulties to solve blood relation questions so we are going to discuss here some tips to solve blood relations most easily.

### Blood Relations Terms

Blood relation is an important section of reasoning that comes under logical reasoning. It checks your logical ability to solve difficult questions easily and quickly. Different blood relations are formed between individuals and are termed by different names. The list of blood relations and their popular names (terms) by which the relations are identified are mentioned below.

#### Relationship terms

Father's son or mother's son  
 Father's daughter or mother's daughter  
 Mother's brother (younger or elder)  
 Father's brother (younger or elder)  
 Father's sister (younger or elder)  
 Mother's sister (younger or elder)  
 Son's wife's  
 Daughter's husband's  
 Sister's husband brother brother  
 Husband's brother or wife's brother  
 Brother's wife sister  
 Husband's sister or wife's sister  
 Husband's father or wife's father for  
 Husband's mother or wife's mother or  
 Brother's son or sister's son  
 Brother's daughter or sister's daughter  
 Uncle's daughter or aunt's daughter  
 Uncle's son or aunt's son  
 Father's father or mother's father  
 Father's mother or mother's mother  
 Father of grandfather or father of grandmother  
 Mother of grandfather or Mother of grandmother

#### Terms used to show the relation

Brother  
 Sister  
 Maternal Uncle  
 Uncle (Paternal)  
 Aunt  
 Aunt  
 Daughter-in-law daughters  
 Son-in-law sisters sisters  
 Brother-in-law husbands  
 Brother-in-law  
 Sister-in-law husbands  
 Sister-in-law husbands  
 For Father-in-law husbands  
 Mother-in-law  
 Nephew  
 Niece  
 Cousin  
 Cousin  
 Grandfather  
 Grandmother  
 Great grandfather  
 Great grandmother

## Types of Blood Relations

There are different types of blood relations and various types of questions formed on them also. Mainly blood relations are of three types and questions former on them in various ways. The types of blood relations are mentioned below in detail.

### 1. Introducing or Pointing

In such types of questions, a person points to or introduces any member by conversation or visual pointing. According to the condition provided in the question, the students need to solve the question logically. We are going to discuss a type of introducing and pointing question with the solution below for a better understanding of students which is helpful in their preparation.

**Example: Pointing toward a person Vineet said to a woman, " His mother is the only daughter of your father." How is the woman related to Vineet?**

**Solution:** By making a diagram using the above-given condition we found that the woman is the mother of Vineet.

### 2. Family Tree or Chart

Family tree questions deal with the relationship between two different family members by making a family tree or family chart. The students can find a required relation by drawing a family tree using the laws. Mostly family tree questions are asked in all the exams. The solved example of such type of question is mentioned below which will be helpful for students in their preparation for exams.

**Example: A and B are brothers, but C and D are sisters. A's son is D's sibling. What exactly is the connection between B and C?**

**Solution:**

→ A's son is D's brother

→ A is C's father. Father's brother is his uncle.

So the answer is uncle

### 3. Coded Blood Relations

In coded blood relations, special characters and symbols are used to establish relationships between individuals. It uses many symbols and characters like #, %, \$, @, \*, ^, <, >, ! etc. An example of coded blood relation is mentioned below.

**Example: Read the following information carefully and answer the question given below:**

If 'A × B' means 'A is the father of B'.

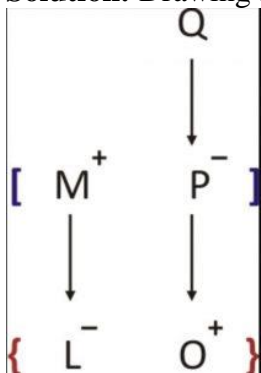
If 'A + B' means 'A is the wife of B'.

If 'A ÷ B' means 'A is the daughter of B'.

If 'A – B' means 'A is the son of B'.

**How is L related to Q in the expression 'L ÷ M × O – P ÷ Q'?**

**Solution:** Drawing a diagram based on a given condition



It is clear from the above diagram L is a Granddaughter of Q.

Bilingual

NRA CET Ready

SSC

MAHA PACK

Live Classes, Video Courses,  
Test Series, eBooks

SSC CGL, CHSL, MTS, GD, CPO,  
Selection Post, Stenographer

## Blood Relation Reasoning Tricks

In reasoning blood relations is an important section that comes under the logical reasoning section and questions about blood relations are asked in all the exams. The questions from blood relations can be solved easily using some useful tricks. Blood relation reasoning tricks help to solve the questions easily and fastly. Blood relation reasoning tricks make the questions easy and short and save time also. Here we are going to discuss some useful tips and tricks to solve blood relation reasoning questions.

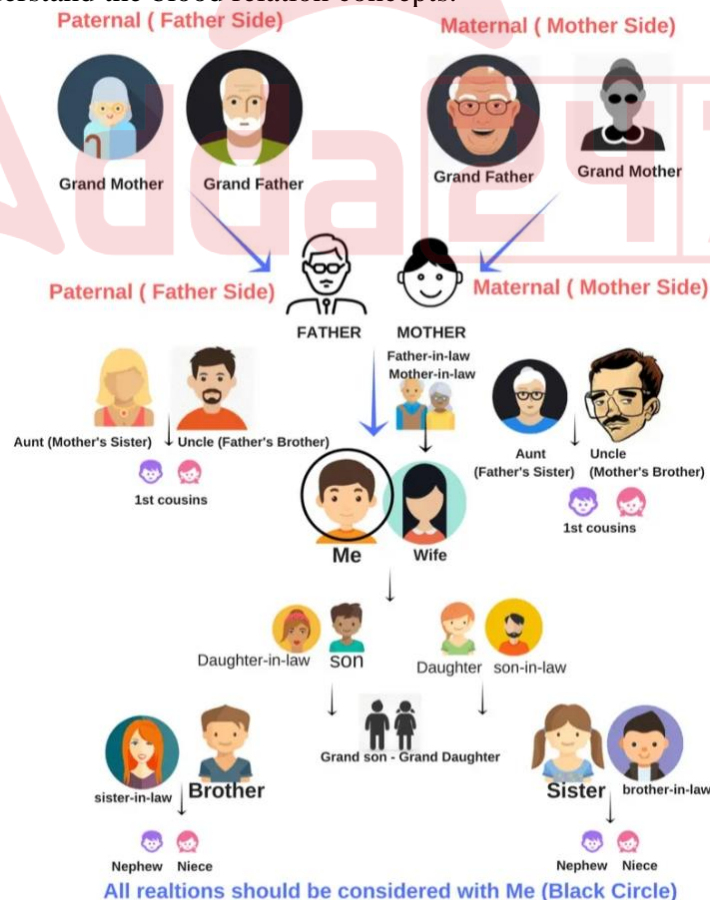
- Candidates need to consider “self” as the introducing person to answer questions asked from blood relations easily.
- In the Coded Relation type blood relation questions, candidates need to check all the options carefully including the gender, to eliminate the wrong options to mark a right answer which fits the condition of the question.
- Never predict the gender of a person based on name, or condition as it may be responsible for a wrong answer.
- Make attention to the wording, only a son or only daughter does not mean the only child.
- Candidates must try to establish the relationship between two persons first to find the relation between others easily.
- Relate the given condition to your self-relation to solve the question easily.
- Candidates should use a pictorial chart or tree to solve puzzle-based questions easily.

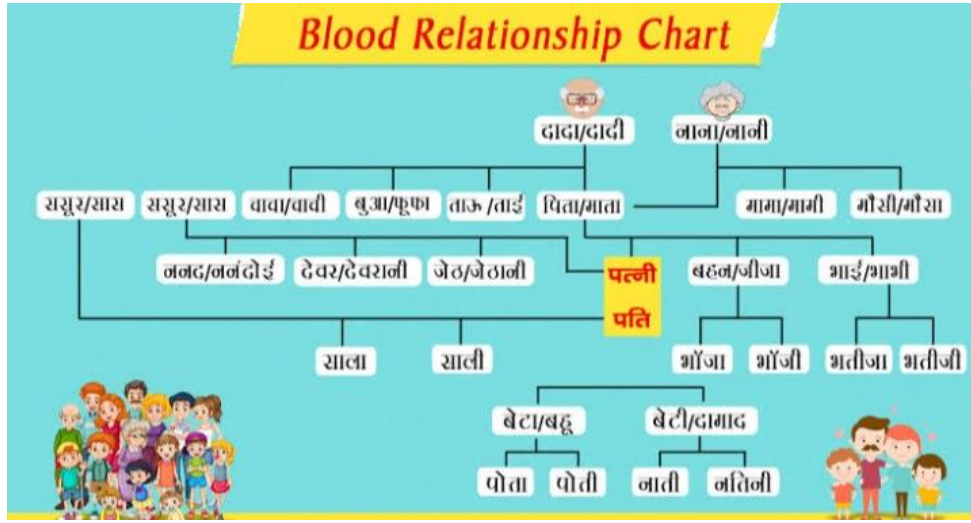
## Blood Relation Questions in Hindi

The students should understand the condition given in the question to read the question in the Hindi language also. Blood relation questions in Hindi give a quick idea to students to solve a puzzle or critical type of question.

## Blood Relation Chart

A blood relation chart helps candidates to understand the blood relation concepts in a good manner. A blood relation chart is a pictorial representation of relation as per given conditions to solve the question easily. A blood relation chart uses many symbols and indication marks to solve the blood relation questions. A blood relation chart is shown below to understand the blood relation concepts.





Hope you find what you were looking for, To get details on **blood relations** stay connected with [sscadda.com](http://sscadda.com). And if you want to read this article in Hindi then click on the link provided below.

[Blood Relation In Hindi](#)

You may also like to read

[Percentage Study Notes](#)

[Time And Work Notes](#)

[Mixture And Alligation Study Notes](#)

[Click here for more Maths Study Notes](#)

**Blood Relations: FAQs**

**Que.1 What is blood relation?**

**Ans -** The relation established between persons by birth only is known by blood relations. For example mother, father, sister, brother, son, daughter, etc.

**Que.2 What is a blood relation chart?**

**Ans -** A blood relation chart is a diagrammatical representation of relationships between persons and it is used to solve blood relation questions easily.

Adda247

BILINGUAL

## ADDA *gold* TEST PACK

for All Govt. Exams  
(Bank, SSC, State, Teaching,  
Defence & UPSC)

20000+ MOCK TESTS